

CHORLEY'S

Cotswolds Heritage since 1862

Fine Art & Antiques Including The Principal Contents Of Dunkirk Manor, 23rd Jul,

1



A pair of cast iron urns with broad decorative rims, each on a square foot, 47cm diameter x 69cm high
Provenance: Dunkirk Manor
£400-600

2



Viewing and collection by appointment for this lot
A marble bird bath, the circular top with lobed decoration on a plain column and square plinth, 59cm diameter x 90cm high
Provenance: Dunkirk Manor
£300-500

3



A pair of cast iron urns, each with fluted decoration to the sides and on a tapering square plinth, each containing an artificial rose bush, the urns 37cm diameter x 68cm high
Provenance: Dunkirk Manor
£300-500

4



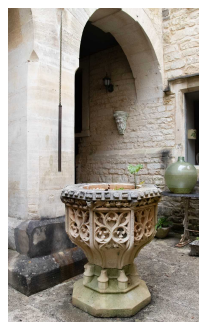
A pair of Chinese ceramic barrel-shaped garden seats, decorated all over with flowering branches and birds, 32cm diameter x 47cm high
Provenance: Dunkirk Manor
£80-120

5



A pair of painted cast iron urns, each with an artificial standard rose bush, 46cm high, 40cm diameter
Provenance: Dunkirk Manor
£200-300

6



Viewing and collection by appointment for this lot
A Victorian carved stone font of Gothic design the octagonal top with a circular basin, the sides with carved decoration, 75.5cm wide x 91cm high
Provenance: Dunkirk Manor
£600-800

CHORLEY'S

Cotswolds Heritage since 1862

Fine Art & Antiques Including The Principal Contents Of Dunkirk Manor, 23rd Jul,

7



A pair of small cast iron urns with egg and dart borders, each on a square foot, 35cm diameter x 46cm high
Provenance: Dunkirk Manor
£250-350

8



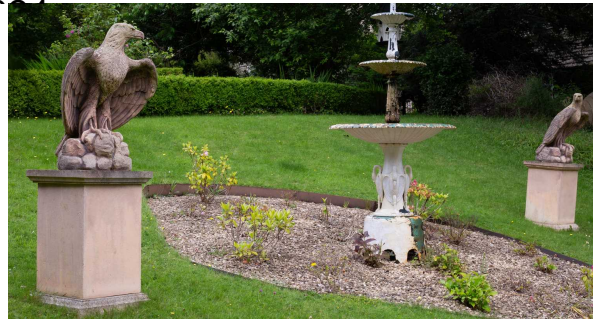
A pair of cast iron urns with fluted decoration to the sides, each on a square foot, 39cm diameter x 47.5cm high
Provenance: Dunkirk Manor
£300-500

9



A pair of twin-handled cast iron urns, with S-scroll handles and on square plinths with wreath decoration to the sides, 49cm across handles x 71cm high
Provenance: Dunkirk Manor
£300-400

10

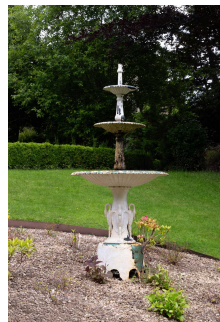


Viewing and collection by appointment for this lot

A pair of Tritonstone Harrow Eagles, each modelled with wings displayed, on square plinths, height including plinths approximately 170cm

Provenance: Dunkirk Manor
£800-1,000

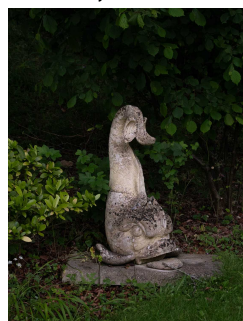
11



Viewing and collection by appointment for this lot.

A painted cast iron three-tier fountain, the three graduated tiers each with egg and dart border on a swan decorated base, largest tier 112cm diameter, total height approximately 245cm
Provenance: Dunkirk Manor
£800-1,200

12



Viewing and collection by appointment for this lot

A reconstituted stone figure of a dolphin, 90cm high

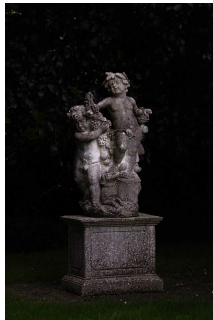
Provenance: Dunkirk Manor
£200-300

CHORLEY'S

Cotswolds Heritage since 1862

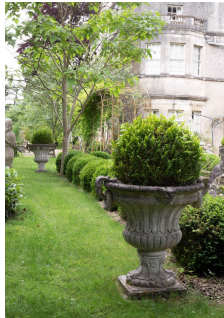
Fine Art & Antiques Including The Principal Contents Of Dunkirk Manor, 23rd Jul,

13



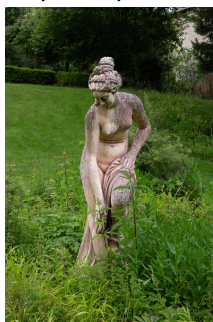
Viewing and collection by appointment for this lot
A reconstituted stone group of Bacchantes with a dog on a rectangular plinth, total height approximately 200cm
 Provenance: Provenance: Dunkirk Manor
£400-600

14



Viewing and collection by appointment for this lot
A set of four campana-shaped reconstituted stone urns, with twin handles and mask heads to the rims, 90cm across handles x 90cm high
 Provenance: Provenance: Dunkirk Manor
£1,000-2,000

15



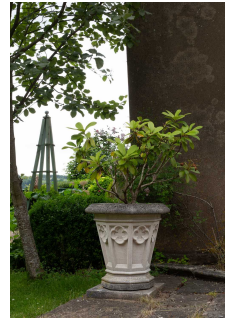
Viewing and collection by appointment for this lot
A Tritonstone figure of the Bather of Allegrain, after the original by Christoph Gabriel Allegrain, 165cm high
 Provenance: Provenance: Dunkirk Manor
£200-300

16



Viewing and collection by appointment for this lot
A set of four reconstituted stone figures modelled as putti emblematic of the four elements, each approximately 100cm high
 Provenance: Provenance: Dunkirk Manor
£250-350

17



Viewing and collection by appointment for this lot
A set of four Haddonstone Gothic vases of tapering octagonal form with quatrefoil motifs, 59cm high
 Provenance: Provenance: Dunkirk Manor
£600-800

18



Viewing and collection by appointment for this lot
A Haddonstone garden table on dolphin supports, 150cm long, 85cm wide, 78cm high and a pair of benches, 130cm long, 40.5cm deep, 43cm high
 Provenance: Provenance: Dunkirk Manor
£500-1,000

CHORLEY'S

Cotswolds Heritage since 1862

Fine Art & Antiques Including The Principal Contents Of Dunkirk Manor, 23rd Jul,

19



Viewing and collection by appointment for this lot

A pair of reconstituted figures of gardeners after John Cheere, he resting his hand and foot on a spade, she holding a lamb, both 138cm high
Provenance: Provenance: Dunkirk Manor
£300-500

20



Viewing and collection by appointment for this lot

A pair of reconstituted stone vase-shaped urns, decorated with swags of fruit, each on a square base, 87cm high
Provenance: Provenance: Dunkirk Manor
£400-600

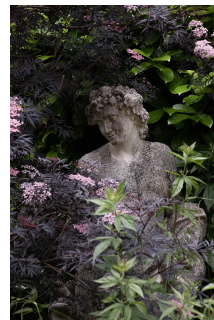
21



Viewing and collection by appointment for this lot

The 'Hampton Court' sundial, the dial signed John Francis, Kew, the circular top on a support of three lead cherubs and a circular stone plinth, 68cm diameter
Provenance: Provenance:- Dunkirk Manor and Purchased from Sir George Godfrey-Faussett by the second Earl St Aldwyn in 1967. The former was the son of Sir Bryan Godfrey Godfrey-Faussett GCVO CMG (1863-1945) who was equerry to George V, Edward VII and George VI. His widow was given a grace and favour apartment at Hampton Court and reputedly several items acquired for Williamstrip Park by the second Earl were originally at Hampton Court
£1,000-2,000

22



Viewing and collection by appointment for this lot

A reconstituted stone figure of Bacchus, standing, holding a goblet and ewer, 180cm high
Provenance: Provenance: Dunkirk Manor
£400-600

23



Viewing by appointment for this lot

A pair of Tritonstone busts of Roman gods, Hercules and Apollo Belvedere, each with stone plinth, 182cm high
Provenance: Provenance: Dunkirk Manor
£600-800

CHORLEY'S

Cotswolds Heritage since 1862

Fine Art & Antiques Including The Principal Contents Of Dunkirk Manor, 23rd Jul,

24



Viewing by appointment for this lot
A pair of Tritonstone reconstituted stone models of recumbent lions on reconstituted plinths, 112cm long x 65cm wide
 Provenance: Dunkirk Manor
£800-1,200

25



Viewing by appointment for this lot
A cast iron bench, two chairs and a table, the bench and chairs with pierced backs and sides and slatted wooden seats, the bench 122cm wide
 Provenance: Dunkirk Manor
£250-350

26



Viewing by appointment for this lot
A hexagonal reconstituted stone wellhead with metal superstructure, 71cm wide, 98cm high in total
 Provenance: Dunkirk Manor
£300-400

27



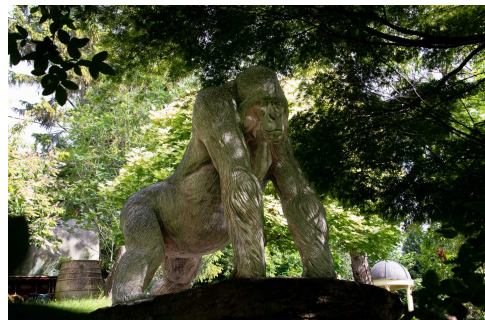
Viewing by appointment for this lot
A Tritonstone model of the Young Boar on a rectangular plinth, the plinth 112.5cm x 61cm
 Provenance: Dunkirk Manor
£300-500

28



Viewing by appointment for this lot
A Tritonstone figure of a Kingsale Hound, limited edition 81/100, the plinth 173cm long x 61cm wide
 Provenance: Dunkirk Manor
 Footnote: In the style of the favourite hunting dogs of the 26th Lord Kingsale, John de Courcy born 1717
£800-1,200

29



Viewing by appointment for this lot
A Tritonstone figure of a silverback gorilla, limited edition of 200, modelled standing on a rocky peninsula, total height 186cm
 Provenance: Dunkirk Manor
 Footnote: Original retail price £6,825
£500-1,000

CHORLEY'S

Cotswolds Heritage since 1862

Fine Art & Antiques Including The Principal Contents Of Dunkirk Manor, 23rd Jul,

30



Viewing and Collection by appointment for this lot

Five various olive jars, some with lug handles

Provenance: Dunkirk Manor

£1,000-2,000

31



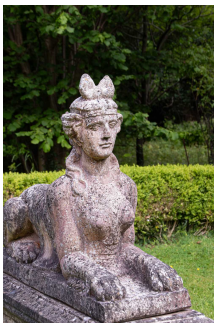
Viewing and collection by appointment for this lot

A burgundy and yellow gypsy caravan, the interior with bunk above a cupboard, stove, chest of drawers etc., front wheel diameter 86cm, rear wheel diameter 108cm, length of hooped covers 310cm

Provenance: Dunkirk Manor

£1,500-2,000

32



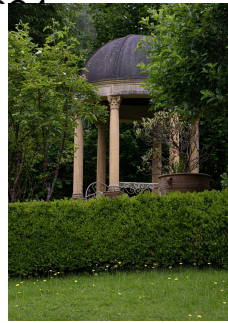
Viewing and collection by appointment for this lot

A pair of Tritonstone Sphinx, each on a rectangular plinth, 122cm long, 45cm wide, 133cm high including plinths

Provenance: Dunkirk Manor

£500-1,000

33



Viewing and collection by appointment for this lot

A Tritonstone temple, with domed faux lead roof on fluted composition stone columns with square plinths, 314cm high x 242cm diameter

Provenance: Dunkirk Manor

£2,000-3,000

34



Lot Withdrawn - A pair of green glass carboys, approximately 50cm high

Provenance: Dunkirk Manor

35



A marble corner basin of bowfronted form, 54cm wide

Provenance: Dunkirk Manor

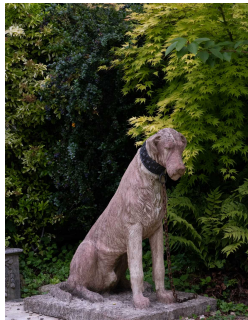
£40-60

CHORLEY'S

Cotswolds Heritage since 1862

Fine Art & Antiques Including The Principal Contents Of Dunkirk Manor, 23rd Jul,

36



Viewing and collection by appointment for this lot

A pair of Cavendish stone wolfhounds, modelled seated and wearing collar and chain, 120cm high

Provenance: Provenance: Dunkirk Manor
£600-800

37



A pair of cast iron lion door stops, 36cm high

Provenance: Provenance: Dunkirk Manor
£40-60

38



A pair of galvanized pails, ebonised and painted with the Royal cipher and Prince of Wales plumes, 28cm high

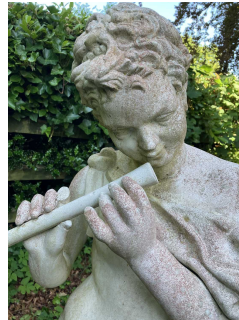
Provenance: Provenance: Dunkirk Manor;
Chorleys, 22nd September 2020, Lot 396 (part)
£150-200

39



A pair of painted cast iron campana urns, possibly by the Handyside foundry, with foliate scrolls to the body above lobed lower part with loop handles issuing from mask heads, on square plinths, 57cm diameter x 75.5cm high
Provenance: Provenance: Dunkirk Manor
£400-600

40



Viewing and collection by appointment for this lot

A reconstituted stone figure of a youth, playing a pipe and wearing a lion skin cape, 140cm high
Provenance: Provenance: Dunkirk Manor
£100-150

41



Viewing and collection by appointment for this lot

A pair of reconstituted stone planters, 84cm wide, 36cm deep, 34cm high and another in the Adam style, 122cm wide, 36cm deep, 35cm high
Provenance: Provenance: Dunkirk Manor
£80-120

CHORLEY'S

Cotswolds Heritage since 1862

Fine Art & Antiques Including The Principal Contents Of Dunkirk Manor, 23rd Jul,

42



A pair of cast lead lion masks, 21cm wide x 22cm deep
Provenance: Dunkirk Manor
£40-60

43



Viewing by appointment for this lot
A reconstituted stone urn, the shallow bowl with ribbed decoration on a fluted support and square base, the top 91cm diameter
Provenance: Dunkirk Manor
£100-150

44



Viewing by appointment for this lot
A pair of reconstituted stone urns, the sides decorated with trails of foliage, 65cm diameter x 63cm high
Provenance: Dunkirk Manor
£100-150

45



A Dutch child's sleigh, 19th Century, with painted and parcel gilt decoration, the sides with landscapes scenes, 91cm high x 117cm wide approximately
Provenance: Dunkirk Manor
£300-500

46



A pair of Victorian papier-mâché chairs, mother of pearl inlay with cane seats, 82cm high
Provenance: Dunkirk Manor
£150-200

47



A French Boulle inlaid bureau, 19th Century, with a three quarter gallery, the sloping fall enclosing a fitted interior of drawers and a well on cabriole supports, 66cm wide, 46cm deep, 92cm high
Provenance: Dunkirk Manor
£200-400

CHORLEY'S

Cotswolds Heritage since 1862

Fine Art & Antiques Including The Principal Contents Of Dunkirk Manor, 23rd Jul,

48



A French Boulle inlaid table, 19th Century, with hinged top and drawer, 61cm wide, 43.5cm deep, 72cm high
Provenance: Dunkirk Manor
£200-300

49



An early 20th Century green japanned longcase clock decorated with pagodas and figures, three train eight day movement, gong striking on each quarter, Westminster chime, 172cm high x 31cm wide
Provenance: Dunkirk Manor; Jester Antiques, 14th December 2007
£400-600

50



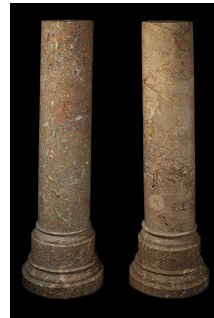
A carved framed window seat, cream upholstered, leaf decorated on square tapering supports, 135cm wide, 55cm deep, 92cm high
Provenance: Dunkirk Manor
£200-300

51



A black lacquer and Chinoiserie and gold decorated cabinet on stand, the cabinet with two doors opening to reveal a fitted interior of pigeon holes and drawers with ivory knobs, with an additional removable work box with fold-out top opening to reveal a lacquered interior with a fitted lift-out tray, on a base with cabriole legs with paw feet, 61cm wide, 135.5cm high, 62cm deep
Ivory registration reference: 74DNGFMB
Provenance: Dunkirk Manor
£400-600

52



A pair of scagliola columns of plain form, 20.5cm in diameter x 122cm high
Provenance: Dunkirk Manor
£400-600

53



A black lacquer and Chinoiserie decorated cabinet on stand, a pair panel doors enclosing an arrangement of dummy drawers on square chamfered legs, 107cm wide, 49.5cm deep, 157cm high
Provenance: Dunkirk Manor
£300-500

CHORLEY'S

Cotswolds Heritage since 1862

Fine Art & Antiques Including The Principal Contents Of Dunkirk Manor, 23rd Jul,

54



A French beech framed sofa with tapestry back and seat decorated with floral vines and pomegranates, 230cm wide x 112cm high
Provenance: Dunkirk Manor
£300-500

55



A marble top centre table on a gold painted frame with jasperware panels to each side, 120cm wide, 80cm deep, 77.5cm high
Provenance: Dunkirk Manor
£200-300

56



A pair of Chinese red lacquered trunks on wood stands, decorated with herons and deer amongst trees and butterflies, 42cm wide, 41cm high (including stand)
Provenance: Dunkirk Manor
£200-300

57



An 18th Century walnut chest on stand the cavetto cornice above three short and three long burr walnut and crossbanded drawers, the base with a central frieze drawer flanked by two deep drawers, on shell capped cabriole legs with pad feet, 101cm wide, 52cm deep, 163cm high
Provenance: Dunkirk Manor
£500-700

58



A pair of modern gilt metal framed side tables with glass tops, 40cm wide, 30cm deep, 60cm high
Provenance: Dunkirk Manor
£200-300

59



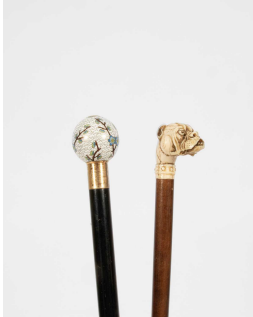
Two Chinese famille rose vases, one decorated with panels of figures, the other with continuous scenes of warriors, each with raised kylin to the shoulders, 45cm high
Provenance: Dunkirk Manor; Catherine Southon, 8th June 2016, Lot 93
£200-400

CHORLEY'S

Cotswolds Heritage since 1862

Fine Art & Antiques Including The Principal Contents Of Dunkirk Manor, 23rd Jul,

60



A Cloisonné handled ebonsied walking cane, early 20th Century, the white cloisonné circular handle decorated with blue blossom, 94cm long and an ivory bulldog handled walking cane, 91cm high (2)

Provenance: Provenance: Dunkirk Manor
£80-120

61



A large quantity of artificial flowers, some by Bloom, in a variety of containers
Provenance: Provenance: Dunkirk Manor
£50-100

62



A 20th Century Venetian style wall mirror, 143cm high x 90cm wide
Provenance: Provenance: Dunkirk Manor
£400-600

63



A large pair of Delft style tulipieres, each of five tiers and stamped Rijks Museum to top tier, 60cm high x 25cm wide

Provenance: Provenance: Dunkirk Manor
£300-500

64



ARR A pair of Marie Prett ceramic sculptures of boy and girl acrobats riding on white horses, 45cm high

Provenance: Provenance: Dunkirk Manor
£300-400

65



ARR A Marie Prett ceramic sculpture, girl acrobat on zebra, 35cm high

Provenance: Provenance: Dunkirk Manor
£150-250

CHORLEY'S

Cotswolds Heritage since 1862

Fine Art & Antiques Including The Principal Contents Of Dunkirk Manor, 23rd Jul,

66



Two pairs of clear glass table lustres one pair with geometric cutting, the other engraved with stags and pheasant, 33cm and 31cm high (4)
Provenance: Dunkirk Manor
£200-300

67



A collection of twenty-six paperweights, three by Caithness, five with jellyfish
Provenance: Dunkirk Manor
£200-300

68



An English ironstone vase decorated in the Chinese style, 72cm high
Provenance: Dunkirk Manor;
Catherine Southon, 26th March 2014, Lot 129
£100-200

69



A pair of painted circular tables, with frieze drawer and undertier, on fluted legs, 55cm in diameter x 64.5cm high
Provenance: Dunkirk Manor
£200-300

70



A pair of Edwardian inlaid display cabinets with bowed central sections, on tapering supports and spade feet, each: 114cm wide, 47cm deep, 179cm high
Provenance: Dunkirk Manor
£400-600

71



Two Victorian papier-mâché tables, both with shaped top, one on a tripod support, 69cm wide, 56.5cm deep, 71cm high and the other on a circular base, 65cm wide, 55cm deep, 67cm high
Provenance: Dunkirk Manor
£200-300

CHORLEY'S

Cotswolds Heritage since 1862

Fine Art & Antiques Including The Principal Contents Of Dunkirk Manor, 23rd Jul,

72



A pair of gilt jardinière stands, with green marble inset tops, on tripod supports, 40cm in diameter x 92cm high
Provenance: Dunkirk Manor
£200-300

73



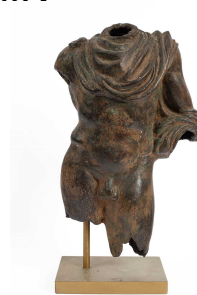
A Victorian ebonised and brass inlaid Boulle work credenza the serpentine top above a brass inlaid frieze and cast brass acanthus leaf and scroll mounts, above for glazed panel doors enclosing shelves, on a plinth base, 216cm wide, 41.5cm deep, 114cm high
Provenance: Dunkirk Manor
£300-500

74



A pair of alabaster urns on pedestal bases, vine decorated, 29cm diameter, 50cm high
Provenance: Dunkirk Manor
£200-300

75



An Italian cast bronze torso of a Classical male figure, mid 20th Century, on a plinth base, 71cm high (including stand)
Provenance: Dunkirk Manor
£300-500

76



A pair of painted demi-lune console tables with faux marble tops, on square tapering legs, 130cm wide, 64cm deep, 75cm high
Provenance: Dunkirk Manor
£300-500

77



A set of ten George III style mahogany dining chairs with pierced ladder backs, 96cm high
Provenance: Dunkirk Manor; Clevertons of Edenbridge, 23rd July 1996 (£4,500)
£700-900

CHORLEY'S

Cotswolds Heritage since 1862

Fine Art & Antiques Including The Principal Contents Of Dunkirk Manor, 23rd Jul,

78



A Regency mahogany extending dining table with three later additional leaves on reeded tapering legs terminating in castors, 136cm long, 113cm deep, 75cm high, 296.5cm long (extended)

Provenance: Dunkirk Manor; Robert Gordon, 12th August 1995 (£5000)
£600-800

79



A pair of red Chinoiserie Harrods étagères, mid 20th Century, three-tier, with faux bamboo supports, 40cm wide, 30cm deep, 70cm high

Provenance: Dunkirk Manor
£200-300

80



A tortoiseshell and ebonised Boulle work side cabinet, 19th Century, with inset white marble top, ormolu mounts, the door centred by a convex oval panel, 80cm wide, 40cm deep, 104cm high

Provenance: Dunkirk Manor
£600-800

81



A large pair of Chinese blue and white bottle vases decorated with grotesque beasts, on fluted Haddonstone plinths, the vases 60cm high, 36cm diameter, the columns: 43cm diameter, 114cm high (2)

Provenance: Dunkirk Manor
£200-400

82



Arthur Meade (1863 - circa 1947)

Landscape with Plough Horses to Foreground
signed indistinctly lower right
oil on board

32cm x 41cm

Provenance: Dunkirk Manor; Catherine Southon, 23rd March 2015, Lot 58
£200-300

83



Attributed to Francois Richard de Montholon (1856-1940)

Rural Landscape
with foliage to foreground
oil on board

24cm x 33cm

Provenance: Dunkirk Manor
£200-400

CHORLEY'S

Cotswolds Heritage since 1862

Fine Art & Antiques Including The Principal Contents Of Dunkirk Manor, 23rd Jul,

84



Louis Henri Foreau (1866-1938)
Rural Landscape
with stream and figures to foreground
signed lower right
oil on canvas
84cm x 77cm
Provenance: Provenance: Dunkirk Manor
£600-800

87



A French ebonised and Boulle worktable,
ormolu mounts with hinged lid and drawer above
a sewing well, 55cm wide, 38cm deep, 71cm
high
Provenance: Provenance: Dunkirk Manor
£200-300

85



Six Meissen relief moulded dishes, circa 1850,
comprising a large pair moulded with four panels
of flowers, a smaller pair with eagles, an oval
two-handled dish and a circular blue-ground
bowl, the largest pair 30cm diameter.
Provenance: Provenance: Dunkirk Manor
£300-400

88



**A pair of 20th Century gilt framed open
armchairs**, pale blue damask upholstery, 99cm
high
Provenance: Provenance: Dunkirk Manor
£200-300

86



**A pair of white overlay cranberry flash Bohemian
vases** as lamps, painted with figures of ladies
and gentlemen, on painted wood bases, 70cm
high including mounts
Provenance: Provenance: Dunkirk Manor
£200-300

89



A French walnut and burr walnut escritoire with
a cornice above a long drawer, the panelled fall
enclosing a fitted interior of pigeonholes and an
arrangement of six parquetry drawers, with one
ivory escutcheon, above a green leather writing
surface, above three long drawers flanked by
fluted pilasters, on bun feet, 103.5cm wide,
56.5cm deep, 169.5cm high
Ivory registration reference: Y7JP6YPG
Provenance: Provenance: Dunkirk Manor
£300-500

CHORLEY'S

Cotswolds Heritage since 1862

Fine Art & Antiques Including The Principal Contents Of Dunkirk Manor, 23rd Jul,

90



A French provincial commode of bombe form with marble top, two small and two long drawers on cabriole supports, 116cm wide, 46cm deep, 86cm high
Provenance: Dunkirk Manor
£200-400

91



A pair of French walnut and mahogany commodes, 20th Century, with marble tops, satinwood banding, gilt metal mounts, on splayed supports, 60cm wide, 34cm deep, 74cm high
Provenance: Dunkirk Manor
£200-300

92



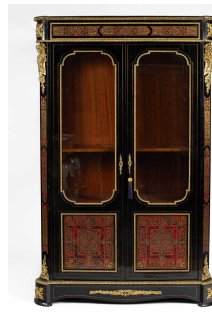
A floral and gilt painted porcelain tray on stand with scroll metal handles, on a black painted base with gilt details, turned legs and an x stretcher, 62.5cm wide, 44.5cm deep, 69cm high
Provenance: Dunkirk Manor
£200-300

93



A marble top vase table on painted supports, 54cm wide, 57cm deep, 85cm high
Provenance: Dunkirk Manor
£300-500

94



A French ebonised and Boulle work, gilt metal mounted display cabinet with two cartouche glazed and faux tortoiseshell and brass inlaid panel doors enclosing shelves, 125cm wide, 53cm deep, 200cm high
Provenance: Dunkirk Manor
£500-700

95



A French carved framed salon suite floral upholstered, comprising sofa, two carvers and two single chairs, the sofa 104cm high, the chairs 92cm high (5)
Provenance: Dunkirk Manor
£400-600

CHORLEY'S

Cotswolds Heritage since 1862

Fine Art & Antiques Including The Principal Contents Of Dunkirk Manor, 23rd Jul,

96



A pair of Ian Snow Ltd. painted metal storage chests, decorated in the chinoiserie style, 50cm wide x 60cm high
Provenance: Dunkirk Manor
£200-300

99



A pair of modern Chinese celadon glazed vases, with white decoration of bats and kylin, on wooden stands, vases 40.5cm high
Provenance: Dunkirk Manor
£200-300

97



A reproduction walnut and mahogany chest on chest, 75.5cm wide, 39cm deep, 147cm high
Provenance: Dunkirk Manor
£200-300

100



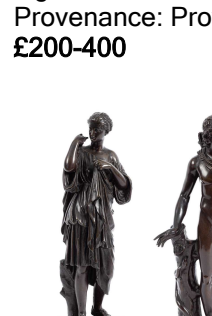
A Chinese blue and white floor standing vase, baluster shaped, decorated with dragon and scholar, brass mounted to rim and base, 96cm high
Provenance: Dunkirk Manor
£200-400

98



A French ebonised mother-of-pearl and brass inlaid centre table, 19th Century, with serpentine drawer, gilt metal mounts, on four cabriole supports, 130cm wide, 84.5cm deep, 74cm high
Provenance: Dunkirk Manor
£400-600

101



After Ferdinand Barbedienne (1810-1892), bronze figure 'Apollo Belvedere' after the antique, standing in a cloak with a quiver upon his back, his arm outstretched grasping a baton, beside a tree stump with an entwined serpent, on a circular base, with Collas Reduction Antique seal, 44cm high and a bronze figure of 'Diane de Gabies', 43.5cm high (2)
Provenance: Dunkirk Manor
£300-400

CHORLEY'S

Cotswolds Heritage since 1862

Fine Art & Antiques Including The Principal Contents Of Dunkirk Manor, 23rd Jul,

102



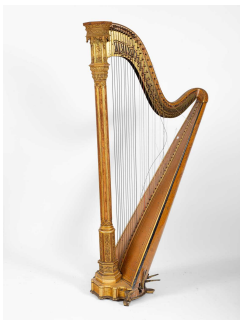
Two Chinese chargers, 20th Century, both polychrome decorated, one with decorated with phoenix to centre with a frieze of symbols, 47cm in diameter the other floral decorated, 47cm in diameter (2)
Provenance: Provenance: Dunkirk Manor
£300-500

103



A pair of Chinese blue and white vases with covers, early 20th Century, hexagonal with Dog of Foo finials decorated with dragons, 68cm high
Provenance: Provenance: Dunkirk Manor
£200-300

104



A Gothic Revival maple and giltwood pedal harp by Sebastian & Pierre Erard, Paris

19th Century, gilt wood, patent no. 5131, decorated with panels of Saints, 175.5cm high
Provenance: Provenance: Dunkirk Manor
Footnote: *Sebastian Erard designed the double action system for the harp which is now found with minor variations in all modern harps. Establishing a factory in Paris, Erard manufactured pianofortes for Marie-Antoinette and the Duchesse de Villeroi. Erard fled at the onset of the French Revolution, setting up a workshop in Great Marlborough Street, London and attaining similar popularity in the years he resided there.*

Leaving his London workshop in the capable hands of his nephew, Pierre, Sébastien eventually returned to Paris where he continued to reimagine and improve his instruments. The current harp is a comparatively late production, circa 1850, designed by his nephew Pierre. In 1839, England's Queen Victoria appointed Pierre Erard "Pianoforte Maker to Her Majesty." Prince Albert, Queen Victoria's beloved husband, also favoured Erard pianos and commissioned a horizontal grand piano in the Renaissance style.

£1,500-2,000

105



Lucien Frank (1857-1920)

Rural Landscape
with figure in a boat to foreground
signed lower left
oil on canvas

91cm x 118cm

Provenance: Provenance: Dunkirk Manor
£400-600

CHORLEY'S

Cotswolds Heritage since 1862

Fine Art & Antiques Including The Principal Contents Of Dunkirk Manor, 23rd Jul,

106



A pair of tall white opaline glass urn-shaped vases decorated in gold with Classical figures, converted to lamps, 45cm high excluding fittings, 80cm high including fittings
Provenance: Dunkirk Manor
£200-400

107



A Sèvres style three-piece garniture, comprising a pair of vases and an oval bowl painted both sides with Classical figures and landscapes, the vases 83cm high
Provenance: Dunkirk Manor
£400-600

108



A Chinese red painted side cabinet enclosed by two twin panelled cupboard doors, 127cm wide, 44.5cm deep, 84cm high
Provenance: Dunkirk Manor
£200-300

109



A George III style mahogany three-tier dumb waiter, on tripod support, 113cm high
Provenance: Dunkirk Manor
£150-200

110



Two Edwardian vitrine tables, one rectangular on tapering supports, 73cm wide, 43cm deep, 78cm high and the other with shaped top, 69cm wide, 43cm deep, 77cm high
Provenance: Dunkirk Manor
£200-300

111



A French kingwood corner display cabinet with bowfront glazed door above painted Vernis Martin style panel and gilt metal mounts, 75cm wide, 52cm deep, 196cm high
Provenance: Dunkirk Manor; Chorley's, 19th July 2017, Lot 880
£200-400

CHORLEY'S

Cotswolds Heritage since 1862

Fine Art & Antiques Including The Principal Contents Of Dunkirk Manor, 23rd Jul, 2024

112



An Edwardian writing table fitted with three drawers, green leather inset top, on reeded turned supports, 182cm wide, 90.5cm deep, 77cm high

Provenance: Provenance: Dunkirk Manor; Toovey's, 10th June 1999, Lot 908
£400-600

113



Marie-Louise Pichot (1885-1947)

Continental Townscape
with river to foreground
signed lower left

oil on canvas
53cm x 80cm

Provenance: Provenance: Dunkirk Manor; Brightwells, 30th April 2014, Lot 519
£400-600

114



Continental School, 19th Century

Rural Landscape
with peasants to foreground
signed indistinctly lower right

oil on canvas
23cm x 29cm

Provenance: Provenance: Dunkirk Manor
£200-400

115



Naïve School, circa 1800

Man on his Death Bed
with family in attendance
oil on board

21cm x 16cm

Provenance: Provenance: Dunkirk Manor
£200-400

116



A collection of nineteen Limoges enamel trompe l'oeil boxes in the form of fruit and vegetables, the pineapple 9cm tall

Provenance: Provenance: Dunkirk Manor
£200-400

117



CHORLEY'S

Cotswolds Heritage since 1862

Fine Art & Antiques Including The Principal Contents Of Dunkirk Manor, 23rd Jul,

A Venetian style wall mirror, 52cm high x 40cm wide and a pair of Victorian wall-mounted mirror-backed yellow glass posy holders
Provenance: Provenance: Dunkirk Manor
£100-150

118



A Georgian mahogany chest on chest two short and six long drawers, brass handles and escutcheons, on splayed feet, 117cm wide, 57cm deep, 194cm high
Provenance: Provenance: Dunkirk Manor
£400-600

119



A 20th Century travertine dining table in the manner of Willy Rizzo, 200cm long, 100cm deep, 74cm high
Provenance: Provenance: Dunkirk Manor
£400-600

120



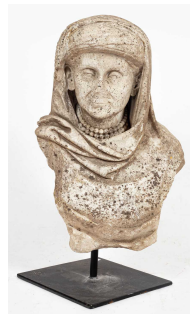
An Edwardian walnut and inlaid bonheur du jour, the raised mirrored back with cupboard enclosing a drop-down writing slope, above a frieze drawer on square tapering legs, 82cm wide, 50cm deep, 132cm high
Provenance: Provenance: Dunkirk Manor; Chorley's, 18th September 2018, Lot 719
£200-300

121



A French salon suite comprising a two seater sofa and two chairs with oval panel backs, pale pink upholstery, 97cm high x 120cm wide
Provenance: Provenance: Dunkirk Manor
£200-300

122



An 18th Century carved marble bust of a lady, wearing a headdress and two rows of beads, 69cm high including metal stand
Provenance: Provenance: Dunkirk Manor; Lorfords, 16th March 2020
£400-600

123



CHORLEY'S

Cotswolds Heritage since 1862

Fine Art & Antiques Including The Principal Contents Of Dunkirk Manor, 23rd Jul, 2024

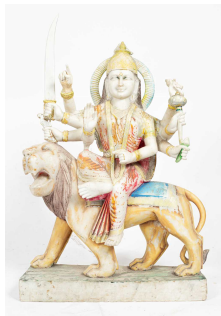
A black lacquer Chinoiserie cabinet on stand
20th Century, the brass bound cabinet with two doors enclosing an arrangement of two long, two short and two smaller drawers flanked by deep drawers, on an associated cabriole leg stand with slipper feet, 77cm wide, 49cm deep, 130.5cm high
Provenance: Dunkirk Manor
£300-500

127



A collection of fourteen chemist's jars, clear glass with gilt labels, 19th Century, the tallest 23cm high
Provenance: Dunkirk Manor
£200-300

128



An Indian alabaster figure of Durga seated on a lion, 67.5cm wide x 107cm high
Provenance: Dunkirk Manor
£100-200



A 19th Century Italian Siena marble model of the sarcophagus of Lucius Cornelius Scipio Barbatus, from the tomb of the Scipios, carved with scrolls, floral motifs and acanthus leaves, inscribed to body, 23.5cm wide, 12cm high
Provenance: Dunkirk Manor;
Chorley's 19th July 2017 Lot 115
Footnote: Rediscovered in 1780, the sarcophagus of Lucius Cornelius Scipio Barbatus was the only intact survival within the Tomb of the Scipios on the Via Appia. It became a key feature and symbol of the Grand Tour and is now held in the Museo Pio Clementino in the Vatican. Lucius Cornelius Scipio Barbatus was a Roman consul and victor over the Etruscans at the Battle of Volterra in 298 BC.
£2,000-4,000



A collection of Herend Rothschild birds pattern porcelain, including a hexagonal tea caddy and cover, 27cm high, a cache pot, vases etc.
Provenance: Dunkirk Manor
£100-150

129



A modern Delft style hanging birdcage, 45cm high
Provenance: Dunkirk Manor
£150-200

124

125

126

CHORLEY'S

Cotswolds Heritage since 1862

Fine Art & Antiques Including The Principal Contents Of Dunkirk Manor, 23rd Jul,

Twelve modern Rye pottery figures, including a pair of candlesticks and farmyard animals, candlesticks 27cm high 133

Provenance: Dunkirk Manor
£100-200



Three Chinese blue and white vases with covers, baluster shaped, decorated with peonies and a wave border to the base, 30cm wide x 52cm high
 Provenance: Dunkirk Manor
£200-300

130



Royal interest: A Victorian painted library wheelbarrow, bearing the VR monogram, 140cm long
 Provenance: Dunkirk Manor; The Boston of Faversham Collection, Tennants, 25th April 2015, Lot 144
£200-300

134



Emilie Mediz-Pelikan (1861-1908)
 Beach Scene
 with figures to foreground
 signed lower left
 oil on canvas
 25.5cm x 43cm
 Provenance: Dunkirk Manor
£400-600

131



A Chinese lacquered cabinet, the doors painted with bats and character marks, enclosing shelves and secret cupboard, on straight supports, 126cm wide, 56cm deep, 181cm high
 Provenance: Dunkirk Manor
£100-150

135



Emilie Mediz-Pelikan (1861-1908)
 Rural Landscape
 with travelling figures
 oil on canvas
 25cm x 37cm
 Provenance: Dunkirk Manor
£300-500

132



A square marble plinth with gilt metal mounts, the top 29cm x 29cm, 118cm high
 Provenance: Dunkirk Manor
£200-300

CHORLEY'S

Cotswolds Heritage since 1862

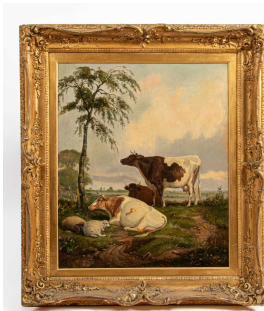
Fine Art & Antiques Including The Principal Contents Of Dunkirk Manor, 23rd Jul, 2024

136



A Chinese gong on a carved and pierced stand,
61cm wide x 97cm high
Provenance: Provenance: Dunkirk Manor;
Brightwells, 27th March 2013, Lot 855
£300-500

137



Follower of Thomas Sidney Cooper (1803-1902)

Cattle and Sheep in a Landscape
bears signature
oil on canvas
80cm x 64cm
Provenance: Provenance: Dunkirk Manor;
Bonhams, Oxford, 14-15 April 2015, Lot 198
£1,000-1,500

138



English Provincial School, circa 1800

Cattle in a Landscape
oil on canvas
38cm x 59cm
Provenance: Provenance: Dunkirk Manor
£400-600

139



Edward Priestley (19th Century)

Rural Landscape
with plough horses to foreground
signed lower right
oil on canvas
38cm x 59cm
Provenance: Provenance: Dunkirk Manor
£200-400

140



A pair of late Victorian upholstered armchairs
with scroll over backs, upholstered arms and
seats, on ring turned tapering legs with castors,
84cm wide, 91cm high, seat height 39cm
Provenance: Provenance: Dunkirk Manor
£200-300

141



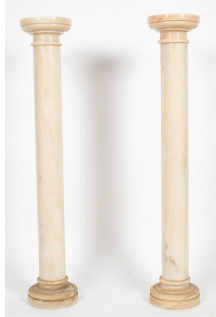
A large Victorian fire screen with needlework
panel flanked by turned columns and depicting
Mary Queen of Scots at the Battle of Langside
attended by Priests, 133cm high x 127cm wide
Provenance: Provenance: Dunkirk Manor
£300-400

CHORLEY'S

Cotswolds Heritage since 1862

Fine Art & Antiques Including The Principal Contents Of Dunkirk Manor, 23rd Jul,

142



A pair of alabaster columns of plain form, 120cm high
Provenance: Dunkirk Manor
£200-300

143



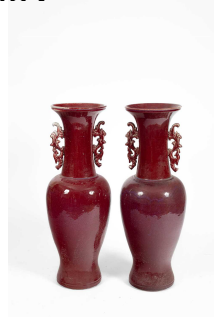
A pair of gilt-brass and white painted Corinthian column table lamps, 20th Century, each column wrapped with vines and grapes, the stepped square bases with palmette motifs, 80cm high
Provenance: Dunkirk Manor;
Roseberys lot 376 21st February 2023
£200-300

144



A marble bust of Diana, 19th Century, on a circular base, 71cm high
Provenance: Dunkirk Manor;
Fonsie Mealy Auctioneers Lot 1116 September 2020
£800-1,200

145



A pair of large floor standing Chinese vases in sang de boeuf glaze, 109cm high
Provenance: Dunkirk Manor
£600-800

146



B Gardner (19th Century)
Still Life with Vase of Flowers
signed lower right
oil on canvas
119cm x 97cm
Provenance: Dunkirk Manor
£400-600

147



A pair of toleware type planters of square flared form, with lion mask ring handles, 30cm high, and a smaller pair of toleware type planters
Provenance: Dunkirk Manor
£40-60

CHORLEY'S

Cotswolds Heritage since 1862

Fine Art & Antiques Including The Principal Contents Of Dunkirk Manor, 23rd Jul, 2024

148



A Victorian burr walnut dressing box, the hinged cover enclosing a mirror and a lift-out tray fitted with silver plate mounted bottles and jars, a drawer to the base, 31cm wide, 23cm deep, 18cm high
Provenance: Dunkirk Manor
£200-300

149



A carved painted wooden horse, on a rectangular mount, 82cm long
Provenance: Dunkirk Manor;
Eastington Hall house sale, Chorleys 21st May 2019, Lot 103
£150-200

150



A pair of George III style satinwood and floral painted jardinière stands with oval tops painted with garlands of roses above similarly painted friezes and undertiers, on square tapering legs painted with trailing bellflowers,, each: 31cm wide, 25cm deep, 74cm high
Provenance: Dunkirk Manor
£200-300

151



After George Morland
Winter Farmyard Scene
with sheep in a barn
oil on canvas
46cm x 58cm
Provenance: Dunkirk Manor
£200-400

152



English School, circa 1800
A Horse in a Landscape
with hounds and dead game to foreground
oil on panel
21cm x 29cm
Provenance: Dunkirk Manor
£400-600

153



English School, 19th Century
Cattle in a Landscape
oil on canvas
31cm x 52cm
Provenance: Dunkirk Manor
£400-600

CHORLEY'S

Cotswolds Heritage since 1862

Fine Art & Antiques Including The Principal Contents Of Dunkirk Manor, 23rd Jul,

154



Isidore Verheyden (1846-1905)

Landscape with Water Lilies

signed lower left

oil on canvas

24cm x 29cm

with an additional, later oil on canvas, depicting flowers (2)

Provenance: Provenance: Dunkirk Manor

£200-400

155



ARR Emile Antoine Verpilleux (1888-1964)

Summer Landscape

signed and dated lower right 1916

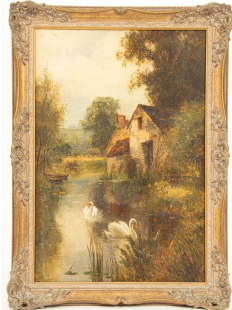
oil on board

33cm x 39cm

Provenance: Provenance: Dunkirk Manor;
Dominic Winter, 2nd October 2013, Lot 210

£200-300

156



Ernest Walbourn (1871-1927)

Swans on a River

oil on board

72.4cm x 48.3cm

Provenance: Provenance: Dunkirk Manor;
Brightwells, 4th November 2015, Lot 584

£100-150

157



A pair of 19th Century French circular beech and marble top tables the brass gallery tops above plain friezes with two opposing frieze drawers and two opposing tooled leather inlaid slides, on

turned and fluted tapering legs with brass capping, each 65cm diameter, 71cm high

Provenance: Provenance: Dunkirk Manor

£200-400

158



A Louis XVI style giltwood centre table the oval top inset with a red veined marble top, with a ribbon twist frieze on turned and fluted tapering

legs joined by a curved X stretcher, 89cm wide, 62cm deep, 75cm high

Provenance: Provenance: Dunkirk Manor

£200-400

159



CHORLEY'S

Cotswolds Heritage since 1862

Fine Art & Antiques Including The Principal Contents Of Dunkirk Manor, 23rd Jul,

A Louis XV style sofa with painted frame, needlework back and seat, 169cm wide
Provenance: Provenance: Dunkirk Manor
£200-300

160



An Edwardian salon suite of small proportions comprising a sofa and two tub chairs with button back details, on cabriole legs terminating in castors (3), the sofa: 152cm wide, 78cm high, Seat Height: 43cm
Provenance: Provenance: Dunkirk Manor
£200-300

161



A pair of large floor standing Oriental style vases, decorated peacocks and flowers, 92cm high
Provenance: Provenance: Dunkirk Manor
£200-300

162



Italian School, 19th Century
After Raphael
Madonna and Child
oil on canvas
68cm x 58cm
Provenance: Provenance: Dunkirk Manor
£1,000-2,000

163



Continental School, 19th Century
Still Lives with Flowers
a pair
initialled A M
oil on canvas
100cm x 80cm
Provenance: Provenance: Dunkirk Manor
£600-800

164



European School, 19th Century
A Peasant Couple Surrounded by Cattle
oil on canvas
66cm x 88cm
Provenance: Provenance: Dunkirk Manor
£500-700

165



A silver part dressing table set, Adie Brothers, Birmingham 1950/1951, enamel decorated with ducks flying over lakes (3)
Provenance: Provenance: Dunkirk Manor
£200-300

CHORLEY'S

Cotswolds Heritage since 1862

Fine Art & Antiques Including The Principal Contents Of Dunkirk Manor, 23rd Jul,

166



A Chinese elm and brass mounted cabinet fitted an arrangement of drawers and cupboards, 99cm wide, 42cm deep, 146cm high
Provenance: Dunkirk Manor
£500-700

167



Two Cantonese famille rose tulip vases, lacking covers, each painted panels of figures within borders of insects and flowers, 21.5cm high
Provenance: Dunkirk Manor
£200-300

168



Three South East Asian carved stone figures, the largest 84cm high (including plinth)
Provenance: Dunkirk Manor
£250-350

169



A Chinese export black lacquered cabinet on stand, 19th Century, with chinoiserie decoration in gilt and ivory knobs to the internal drawers, 67.5cm wide
Ivory registration reference: N2ECVSK1
Provenance: Dunkirk Manor
£800-1,200

170



A pair of Grand Tour type carved marble urns of circular lobed shape, on a near pair of columns, 140cm high and 120cm high including plinths, each containing an artificial orchid
Provenance: Dunkirk Manor
£500-700

171



A Victorian mahogany console table the rectangular top above a cavetto frieze with central drawer, on scroll end supports with a concave fronted base with disc feet, 98cm wide, 45cm deep, 86cm high
Provenance: Dunkirk Manor
£300-400

CHORLEY'S

Cotswolds Heritage since 1862

Fine Art & Antiques Including The Principal Contents Of Dunkirk Manor, 23rd Jul,

172



A pair of French porcelain cache pots, decorated reserves of flowers to a trellis ground, 20cm high
Provenance: Dunkirk Manor
£30-40

175



A pair of red Chinoiserie Harrods étagères, mid 20th Century, three-tier, with faux bamboo supports, 40cm wide, 30cm deep, 70cm high
Provenance: Dunkirk Manor
£200-300

173



A collection of scent bottles to include a Victorian ruby glass double ended scent bottle, a silver cased green glass scent bottle, blue jasperware scent bottle etc
Provenance: Dunkirk Manor
£250-350

176



A pair of Chinese crackleware bottle vases, decorated in enamels with river scenes, 33cm high
Provenance: Dunkirk Manor and Brightwells, 28th Jan 2015, Lot 521
£600-800

174



A pair of Chinese Republican period saucer dishes, horses in landscapes, 33.5cm diameter
Provenance: Dunkirk Manor; Chorley's, Beverston Castle House Sale, 29th Jan 2019 Lot 451
£300-500

177



A Chinese pale jade conjoined vase with ring handles, 23cm high
Provenance: Dunkirk Manor
£400-600

CHORLEY'S

Cotswolds Heritage since 1862

Fine Art & Antiques Including The Principal Contents Of Dunkirk Manor, 23rd Jul,

178



A Roman marble cinerary urn and lid, Flavian, circa AD 69-96, the front carved with eagles to the corners and with a ram's mask to each side supporting a swag of olive leaves, the central rectangular panel later carved with an inscription, the cover also of later date,
Provenance: Dunkirk Manor; Sir Francis Cook, 1st Baronet (1817-1901), Doughty House, Richmond, Surrey
Sir Francis Cook, 4th Baronet (1907-1978), by descent, sold shortly after WWII
Estate of Joan Griffiths, Christie's, London, 28th July 2009, Lot 288A
Sotheby's, New York, 11th June, 2010, Lot 44
Bonhams, London, 2nd October 2014, Lot 43
Sotheby's, London, 3rd July 2018, Lot 38
Literature: Ludovico Antonio Muratori, *Novus Thesaurus Veterum Inscriptionum*, Milan, 1739-1742, p. 1319, no. 8
Adolf Michaelis, *Ancient Marbles in Great Britain*, Cambridge, 1882, p. 642, no. 80
Christian Hülsen, ed., *Corpus Inscriptionum Latinarum*, vol. VI: *Inscriptiones Urbis Romae Latinae*, part 4: *Addimenta*, Berlin, 1902, no. 30482a
Eugenie Strong, "Antiques in the Collection of Sir Frederic Cook, Bart., at Doughty House, Richmond," *Journal of Hellenic Studies*, vol. 28, 1908, p. 40, no. 65, fig. 23
(<https://archive.org/stream/journalofhelleni28sociuoft#page/41/mode/1up>)
Friederike Sinn, *Stadtrömische Marmorurnen*, Mainz am Rhein, 1987, p. 149, no. 227
Footnote: The inscription to L. Casperius Epaphroditus, which scholars consider to be a modern addition, was likely to have been copied from one in Naples (*CIL VI.14480; Catalogo delle iscrizioni latine del Museo di Napoli*, vol. 1, Naples, 2000, p. 114-115, no. 218).
£8,000-12,000

179



Attributed to Ernest Llewellyn Hampshire (1882-1944)
Italian Landscape with hilltop village signed lower right
oil on board
29cm x 39cm
Provenance: Dunkirk Manor
£300-500

180



ARR Francis Murray Russell Flint (1915-1977)
Canal in Hague signed lower left
oil on canvas
48.5cm x 60cm
Provenance: Dunkirk Manor and Chorley's, 19th October 2021, Lot 494
£300-500

181



A Jacob Petit mantel clock, the porcelain case surmounted by a sailor, blue scrolling base heightened gilt, 50cm high
Provenance: Dunkirk Manor
£200-300

CHORLEY'S

Cotswolds Heritage since 1862

Fine Art & Antiques Including The Principal Contents Of Dunkirk Manor, 23rd Jul,

182



ARR Arthur Spooner (1873-1962)

A Mare and Foal in a Landscape

signed lower right

oil on canvas board

38cm x 50cm

Provenance: Provenance: Dunkirk Manor and Brightwells, 7th October 2015, Lot 412

£400-600

183



A modernist sculpture formed of conjoined gilt metal spheres, on a marble plinth, 79cm high and two pieces of art glass (3)

Provenance: Provenance: Dunkirk Manor

£60-80

184



A pair of carved marble capitals, 18cm x 18cm x 13cm and a carved alabaster stand

Provenance: Provenance: Dunkirk Manor

£80-120

185



A pair of Japanese blue and white vases, early 20th Century, depicting birds among foliage, 48cm high

Provenance: Provenance:- Dunkirk Manor

£60-80

186



A pair of stools with blue needlework seats on carved legs, 52cm wide x 41cm deep x 44cm high

Provenance: Provenance:- Dunkirk Manor

£50-70

187



A group of decorative Chinese and Japanese blue and white porcelain vases comprising a pair of blue and white slender necked baluster vases decorated with cranes to the neck, 29cm high; a pair of bell shaped candlestick bases (lacking fittings) 14.5cm wide, 14.5cm deep, 19cm high; a lidded baluster vase decorated with dragons, 33cm high and a tall 20th century baluster vase with a wavy rim 36cm high (6)

Provenance: Provenance:- Dunkirk Manor and The Baluster Vases Brightwells June 2014, Lot 362

£80-120

CHORLEY'S

Cotswolds Heritage since 1862

Fine Art & Antiques Including The Principal Contents Of Dunkirk Manor, 23rd Jul,

188



A pair of mahogany torchères, each of reeded column form on a tripod base, 128cm high
Provenance: Dunkirk Manor
£50-70

189



An Attic style twin-handled vase, in red and black with a frieze of figures between geometric bands, 48cm high
Provenance: Dunkirk Manor
£40-60

190



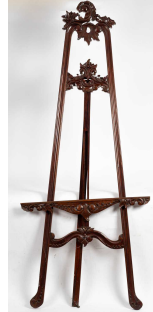
A pair of circular porcelain plaques painted summer flowers, 19th Century, 23cm diameter including gilt frame
Provenance: Dunkirk Manor and Brightwells, 25th June 2014, Lot 442
£40-60

191



A small collection of magnifying glasses, with glass, ceramic and mother of pearl handles (7)
Provenance: Dunkirk Manor
£60-80

192



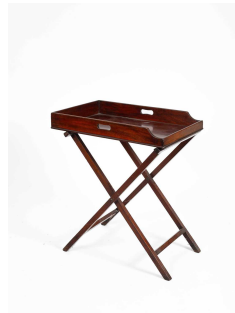
A mahogany carved and pierced easel, leaf and scroll decorated, 215cm high
Provenance: Dunkirk Manor
£40-60

193



A pair of Chinese rice paper pictures depicting swordsmen, 27cm x 17.5cm
Provenance: Dunkirk Manor
£30-50

194



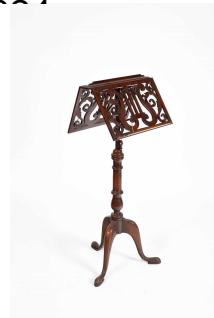
CHORLEY'S

Cotswolds Heritage since 1862

Fine Art & Antiques Including The Principal Contents Of Dunkirk Manor, 23rd Jul,

A George III mahogany butler's tray on stand,
tray 73cm x 47cm
Provenance: Provenance:- Dunkirk Manor
£100-150

198



A Victorian mahogany duet stand on turned column and tripod base, 124cm high
Provenance: Provenance:- Dunkirk Manor
£80-100

199



A Chinese blue and white porcelain fountain, 20th Century, decorated dragons and landscapes, 133cm high x 51cm diameter
Provenance: Provenance:- Dunkirk Manor
£200-300

200



A Victorian marble top table the circular marble top above a scroll carved frieze, on a carved baluster column issuing four carved scroll legs, 61cm diameter x 75cm high
Provenance: Provenance:- Dunkirk Manor
£100-150

A George III mahogany serpentine front knife box, converted for stationery, 23cm wide x 36.5cm high
Provenance: Provenance:- Dunkirk Manor
£60-80

199



A pair of green tole jars and covers, numbered 18 and 15, 42cm high and two others (4)
Provenance: Provenance:- Dunkirk Manor
£40-60

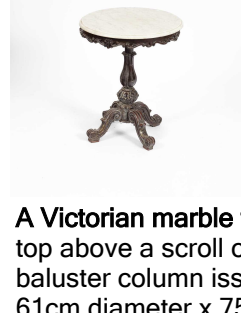
200



A Victorian marble top table the circular marble top above a scroll carved frieze, on a carved baluster column issuing four carved scroll legs, 61cm diameter x 75cm high
Provenance: Provenance:- Dunkirk Manor
£100-150

An Edwardian painted satinwood Pembroke table, the oval two-flap top centred by a scene of the sleeping cupid after Angelica Kauffman, fitted a drawer opposed by a dummy drawer on square taper legs, 95.5cm wide (open) x 74cm deep x 69cm high
Provenance: Provenance:- Dunkirk Manor and Chorley's, 23rd November 2021, Lot 708
£120-180

197



An Edwardian painted satinwood Pembroke table, the oval two-flap top centred by a scene of the sleeping cupid after Angelica Kauffman, fitted a drawer opposed by a dummy drawer on square taper legs, 95.5cm wide (open) x 74cm deep x 69cm high
Provenance: Provenance:- Dunkirk Manor and Chorley's, 23rd November 2021, Lot 708
£120-180

CHORLEY'S

Cotswolds Heritage since 1862

Fine Art & Antiques Including The Principal Contents Of Dunkirk Manor, 23rd Jul,

201



A large pottery figure of a cock pheasant, 100cm long x 52cm high
Provenance: Provenance:- Dunkirk Manor
£80-120

202



A carved marble urn, 30cm diameter
Provenance: Provenance:- Dunkirk Manor
£40-60

203



A stone slab carved with floral designs, 52cm x 35.5cm
Provenance: Provenance:- Dunkirk Manor
£60-80

204



A three-tier lacquered storage box, Chinoiserie decorated, of conjoined square form, 73cm wide, 45cm diameter, 42cm high
Provenance: Provenance:- Dunkirk Manor
£100-150

205



A carved fruitwood Savonarola chair with a grotesque bat-winged Satyr mask above the pieced bar back, the lion mask scroll capitals trailing to leopard terminal arms, with scale carved curved X supports centred by a Demon mask, 58cm wide, 86.5cm high, with an associated needlework cushion
Provenance: Provenance:- Dunkirk Manor
£100-150

206



A large Japanese blue and white charger, depicting a bird with peony flowers in a fenced garden, 62.5cm diameter
Provenance: Provenance:- Dunkirk Manor
£150-200

207



CHORLEY'S

Cotswolds Heritage since 1862

Fine Art & Antiques Including The Principal Contents Of Dunkirk Manor, 23rd Jul,

A pair of French gilt framed open armchairs, early 19th Century, oval backs above serpentine seats on stop fluted legs, 89cm high
Provenance: Provenance:- Dunkirk Manor
£100-150

208



A Chinoiserie decorated display cabinet, early 20th Century, enclosed by glazed doors on cabriole legs, 77cm wide, 31cm deep, 132cm high
Provenance: Provenance:- Dunkirk Manor
£100-150

209



A pair of Emaf Progetti for Zanotta 'Cipango' tables, in blue and red, with flowerhead shaped tops, 49cm wide x 69cm high
Provenance: Provenance:- Dunkirk Manor
£120-180

210



A pair of Empire style table candelabra, each of alabaster square column form surmounted by a lyre and with two gilt metal candle arms, 38cm high
Provenance: Provenance:- Dunkirk Manor
£60-80

211



A Regency style convex wall mirror, surmounted by an eagle and with ball studded frame, 51cm diameter
Provenance: Provenance:- Dunkirk Manor
£60-80

212



A carved wooden figure of a standing Buddha, painted decoration, 116cm high
Provenance: Provenance:- Dunkirk Manor
£150-200

213



A pair of Italian altar style candlesticks, bases inscribed I H S, 163cm high
Provenance: Provenance:- Dunkirk Manor
£60-80

214



CHORLEY'S

Cotswolds Heritage since 1862

Fine Art & Antiques Including The Principal Contents Of Dunkirk Manor, 23rd Jul,

A Chinese famille verte jardinière, Guangxu mark but probably of a later period, 30.5cm diameter x 29cm high and an enamelled bowl of butterfly shape, 28cm wide
Provenance: Provenance:- Dunkirk Manor
£40-60

218



A pair of Italian Brevettato candelabra, six branch, severe light, of vase shape with gilt metal mounts and each mounted with a pair of cherubs, stamped to base N7089-B77, 68.5cm high
Provenance: Provenance:- Dunkirk Manor
£70-90

215



An Oriental black and gilt lacquered four-panel screen, 183cm high and another fabric screen, 159cm high (2)
Provenance: Provenance:- Dunkirk Manor
£100-150

219



A Japanese lacquer work table, with a hinged caddy moulded lid painted with a flowering tree, fitted lift out tray interior above two drawers on end supports joined by a stretcher, 49cm wide, 36cm deep, 82.5cm high
Provenance: Provenance:- Dunkirk Manor
£80-120

216



A large Chinese style moon flask by Eichholtz with dragon handles, 62cm high
Provenance: Provenance:- Dunkirk Manor
£80-100

220



A gilt framed wall mirror fitted with a bevelled plate, 73cm x 73cm
Provenance: Provenance:- Dunkirk Manor
£60-80

217



An Adam style mahogany serving table, by Martin J. Dodge, of breakfront form, on fluted square legs, labelled to reverse, 168cm wide, 57.5cm diameter, 89.5cm high
Provenance: Provenance:- Dunkirk Manor
£150-200

CHORLEY'S

Cotswolds Heritage since 1862

Fine Art & Antiques Including The Principal Contents Of Dunkirk Manor, 23rd Jul,

221



A French style painted chest of three long drawers on carved legs, 101cm wide, 48cm deep, 83.5cm high
Provenance: Dunkirk Manor
£100-150

222



A bronze Dog of Fo, inset with coral eyes and inlaid with coloured glass, 24cm wide x 38cm high
Provenance: Dunkirk Manor
£60-80

223



A polychrome decoupage bowfront chest of drawers 20th Century, with six drawers applied with pink acrylic handles, on splayed legs, 62.5cm wide, 45.5cm deep, 121cm high
Provenance: Dunkirk Manor
£50-70

224



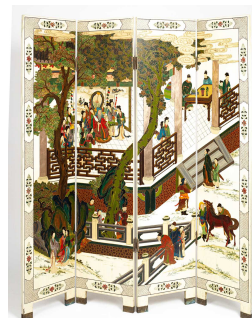
A painted wooden tiller, white painted with polychrome flowers and with the name 'Slapar' mounted on a metal plinth, 207cm high
Provenance: Dunkirk Manor
£60-80

225



A Victorian ebonised folio stand with mother-of-pearl inlaid 50cm wide x 66cm high
Provenance: Dunkirk Manor
£40-60

226



A 20th Century four-panel three-fold screen, finely painted with figures on balconies to one side and exotic birds in flowering branches to the other, each panel 41cm wide, 183cm high
Provenance: Dunkirk Manor and Chorley's, 22nd November 2022, Lot 256
£150-200

CHORLEY'S

Cotswolds Heritage since 1862

Fine Art & Antiques Including The Principal Contents Of Dunkirk Manor, 23rd Jul,

227



A pair of Japanese Satsuma vases, Meiji period, decorated with ducks swimming beneath trailing foliage, 25cm x 80cm
Provenance: Provenance:- Dunkirk Manor and Brightwells, 25th June 2014, Lot 443
£100-120

228



Lot Withdrawn - An 18th Century style gilt framed mirror with foliate and scroll border, 85cm x 49cm
£80-120

229



A small Chinese style red lacquer cabinet with single drawer above cupboard doors, 51cm wide, 36cm deep, 60.5cm high
Provenance: Provenance:- Dunkirk Manor
£40-60

230



A Chinese famille verte baluster vase, 20th Century, decorated peacocks, cranes, fish, geese and flowers in panels, the base mark Zhonguo Jingdezhen Zhi, 55cm high
Provenance: Provenance:- Dunkirk Manor and Chorley's, 20th September 2022, Lot 931
£100-150

231



A pair of Chinese famille rose tureens, modelled as geese, 36cm high
Provenance: Provenance:- Dunkirk Manor and Chorley's, 19th July 2017, Lot 698
£100-150

232



A Chinese porcelain charger, modern, decorated with birds among foliage, six character mark beneath, 45.5cm diameter
Provenance: Provenance:- Dunkirk Manor
£60-80

CHORLEY'S

Cotswolds Heritage since 1862

Fine Art & Antiques Including The Principal Contents Of Dunkirk Manor, 23rd Jul,

233



A mahogany and satinwood crossbanded chest the rectangular moulded edge top with shell inlay, with two short over three long drawers on bracket feet, 95cm x 54cm x 94cm
Provenance: Provenance:- Dunkirk Manor
£150-200

234



A carved mahogany easel with leaf and scroll decoration to the crest, 183cm high
Provenance: Provenance:- Dunkirk Manor
£80-120

235



A pair of Chinese duck tureens on wooden stands, 36cm high including stands and a pair of small tureens modelled as quail
Provenance: Provenance:- Dunkirk Manor and Chorley's, 19th July 2017, Lot 699
£200-300

236



Henry Dawson (British 1811-1878)
The Coming Storm
inscribed verso
oil on board, 30cm x 40cm
Provenance: Provenance:- Dunkirk Manor and Chorley's, 30th January 2018, Lot 664
£150-200

237



A pair of green glazed pottery lamps, painted with trailing roses, and a white glass pair trailed with gilt and painted flowers, the first pair 30cm high excl. fittings
Provenance: Provenance:- Dunkirk Manor
£80-120

238



A pair of green opaline glass lustres with gilt decoration and a pair of tall spirally blown green vases, the lustres 28cm high
Provenance: Provenance:- Dunkirk Manor
£80-120

CHORLEY'S

Cotswolds Heritage since 1862

Fine Art & Antiques Including The Principal Contents Of Dunkirk Manor, 23rd Jul,

239



A pair of matt white glass lustres decorated with pink enamel anthemions, and a turquoise glass example, the pair 30cm high
Provenance: Provenance:- Dunkirk Manor
£150-200

240



Continental School, 19th Century

A Tavern Scene

Elegant Figures by a Lake

a pair

oil on board

17cm x 35cm

Provenance: Provenance:- Dunkirk Manor

£80-120

241



English School, 19th Century

A Continental Townscape

A Marine Scene

a pair

gouache

15cm x 23cm

Provenance: Provenance:- Dunkirk Manor

£80-120

242



Continental School, circa 1800

Salome Presenting the Head of St John the Baptist

oil on canvas

28cm x 23cm

Provenance: Provenance: Dunkirk Manor

£100-150

243



Lot Withdrawn - Continental School, 20th Century

View of Amalfi

signed indistinctly and titled lower right

oil on canvas

68.5cm x 48.5cm

£80-120

244



English Provincial School, 19th Century

A Grey Horse in a Stable

oil on canvas

36.5cm x 49cm

Provenance: Provenance: Dunkirk Manor

£100-150

CHORLEY'S

Cotswolds Heritage since 1862

Fine Art & Antiques Including The Principal Contents Of Dunkirk Manor, 23rd Jul,

245



A large quantity of artificial flowers, some by Bloom, in a variety of containers
Provenance: Dunkirk Manor
£50-100

246



English School, 19th Century
Dutch Fishing Boats on a Choppy Sea
oil on canvas
18cm x 25.5cm
Provenance: Dunkirk Manor
£80-120

247



English School, 19th Century
Fishing Boats on a Choppy Sea
with battleships in the distance
oil on canvas
19cm x 25.5cm
Provenance: Dunkirk Manor
£80-120

248



Manner of Antonietta Brandeis
Panoramic Venetian Scene
signed indistinctly lower right
oil on board
48cm x 101cm
Provenance: Dunkirk Manor
£100-150

249



John Bretland (19th Century)
A Mounted Huntsman
accompanied by hounds, with a river in the distance
signed lower left
oil on canvas
35cm x 56cm
Provenance: Dunkirk Manor
£100-150

250



Continental School, 19th Century
Battle Scene with Napoleon on Horseback
flanked by a cavalry officer
oil on canvas
25cm x 35cm
Provenance: Dunkirk Manor
£80-120

CHORLEY'S

Cotswolds Heritage since 1862

Fine Art & Antiques Including The Principal Contents Of Dunkirk Manor, 23rd Jul,

251



Finch & Co. A collection of Catalogues Volumes 29-30, 32-36; together with further volumes on Collectables to include (Jones) Yvonne Japanned Papier Mache and Tinware; Antiques Collectors' Club, 2012; Clayton (Dudley) Charles Parish - Plant Hunter and Botanical Artist in Burma, The Ray Society, 2017 and others (15)
Provenance: Provenance:- Dunkirk Manor
£80-120

252



Ceramics & Porcelain A collection of books to include Carver (Martin) The Birth of a Borough, Boydell Press, 2011; Sandon (John) Worcester Porcelain at Cheekwood, Antique Collector's Club, 2008, The Youngman Collection: Chinese Jades from Neolithic to Qing, Art Media (10)
Provenance: Provenance:- Dunkirk Manor
£60-80

253



Buffon (Conte de) Storia Naturale degli Uccelli illustrato con 1008 incisioni di Francois-Nicolas Martinet, Italy: Magnus, 2010, large folio in slipcase; together with Delevoy (R.L) Ensor, Fonds Mercator, 1981, folio in slipcase (2)
Provenance: Provenance:- Dunkirk Manor
£50-70

254



Gold & Jewellery A collection of Books to include Harrison (Stephen) et al, Artistic Luxury: Faberge, Tiffany, Lalique, Yale University Press, 2009; Murdoch (Tessa) Going for Gold, Brighton: Sussex Academic Press, 2014; Vignon (Charlotte), Pierre Gouthiere: Virtuoso Gilder at the French Court, New York: Frick Collection, 2017 and three others (6)
Provenance: Provenance:- Dunkirk Manor
£50-70

255



After Auguste Moreau, a pair of bronze cupids leaning on their bows, mounted on circular granite bases and signed indistinctly, 24cm high
Provenance: Provenance:- Dunkirk Manor
£60-80

256



CHORLEY'S

Cotswolds Heritage since 1862

Fine Art & Antiques Including The Principal Contents Of Dunkirk Manor, 23rd Jul,

A carved bowenite Budai (laughing Buddha),
seated on a lotus flower, 15cm high
Provenance: Provenance:- Dunkirk Manor
£40-60

260



Henry William Banks Davis RA (1833-1914)

Deer Beneath Trees in Parkland
oil on paper

29cm x 44cm

Provenance: Provenance:- Dunkirk manor and
Chorley's September 2018 Lot 991

£100-150

261



A Cantonese porcelain punch bowl, 20th

Century, with a small ladle, both decorated in
bright enamels, the bowl 37.5cm diameter

Provenance: Provenance:- Dunkirk Manor and
Brightwells, 4th December 2013, Lot 443

£60-80

262



A Chinese porcelain garden seat, Guangxu

period, of square section decorated a dragon
among chrysanthemums to a yellow ground,
pierced top and sides, 58cm high

Provenance: Provenance:- Dunkirk Manor and
Catherine Southon, 26th March 2014, Lot 121

£300-500

257



A pair of Rococo style white painted wall
brackets 35cm wide, 17cm deep, 44cm high

Provenance: Provenance: Dunkirk Manor
£40-60

258



A Victorian ebonised occasional table with
beadwork top on a tripod base, 41.5cm in
diameter x 68cm high

Provenance: Provenance:- Dunkirk Manor
£40-60

259



Lot Withdrawn

David Bates (1840-1921)

River Landscape with Fishermen
signed lower left and dated 1870

oil on canvas

39cm x 60cm

Provenance: Provenance: Bonham's 26th
November 2013

£200-300

CHORLEY'S

Cotswolds Heritage since 1862

Fine Art & Antiques Including The Principal Contents Of Dunkirk Manor, 23rd Jul,

263



A Japanese octagonal porcelain dish, Meiji period, the central panel decorated figures in a chariot to a brightly enamelled border, 34cm wide
Provenance: Provenance :- Dunkirk Manor and Brightwells, 7th October 2015, Lot 263
£80-120

264



A pair of novelty Huntley & Palmer biscuit tins, modelled as Worcester vases, 25cm high
Provenance: Provenance Brightwells, 30th April 2014, Lot 642
£150-200

265



Karl Eugen Felix (1837-1906)
View of San Giorgio Maggiore, Venice
signed lower right
oil on canvas
40.5cm x 60.5cm
Provenance: Provenance Dominic Winter, 2-3rd October 2013, Lot 59
£150-200

266



A Florentine carved and gilded picture frame, total size 70cm x 60cm
Provenance: Provenance: Brightwells, 7th October 2015, Lot 397
£80-120

267



Two Modernist rugs by Ege Axminster one by Robert Jacobsen titled 'Evolution 1984', 140cm x 200cm, the other Asger Jorn for Art Line by Ege Axminster 'Les Emigrants', 200cm x 140cm (2)
Provenance: Provenance: Dunkirk Manor
£70-100

268



A 20th Century black lacquer and jadeite applied cabinet on stand the cabinet with Chinese figures in landscapes, the figures and rockwork in relief stone, of two doors enclosing a shelf and two drawers below, on a cabriole leg base, 104cm wide, 66cm deep, 138cm high
Provenance: Provenance: Dunkirk Manor
£100-200

CHORLEY'S

Cotswolds Heritage since 1862

Fine Art & Antiques Including The Principal Contents Of Dunkirk Manor, 23rd Jul,

269



A Venetian carved, painted and gilt console table, the Siena marble moulded edge top above an elaborately carved scroll base of rocaille motifs and on bold cabriole legs with scroll feet, 140.5cm wide, 47cm deep, 106cm high
Provenance: Provenance: Dunkirk Manor; Chorley's, 18th July 2017, Lot 1030
£150-250

270



A pair of modern painted metal obelisks, floral decoration, 80cm high
Provenance: Provenance: Dunkirk Manor
£40-60

271



A pair of modern fruitwood urns with covers, acorn shaped with finials on circular turned bases, 43cm high
Provenance: Provenance: Dunkirk Manor
£40-60

272



A pair of white marble Corinthian column table lamps, on square stepped bases, 49cm high
Provenance: Provenance: Dunkirk Manor
£150-200

273



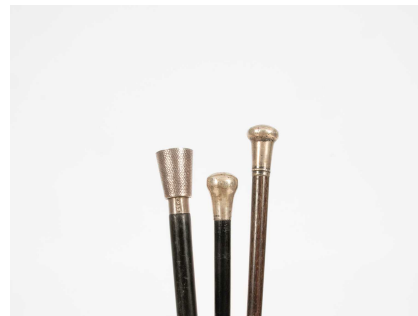
A pair of white marble and gilt metal mounted three branch candelabra, 42cm high
Provenance: Provenance: Dunkirk Manor
£40-60

274



Four early 20th Century walking canes, including two with ceramic handles and a quartz handled walking cane
Provenance: Provenance: Dunkirk Manor
£80-120

275



CHORLEY'S

Cotswolds Heritage since 1862

Fine Art & Antiques Including The Principal Contents Of Dunkirk Manor, 23rd Jul,

Three silver capped walking canes, including one Chinese silver capped cane with junk ship detail
Provenance: Provenance:- Dunkirk Manor
£80-120

279



A Chinese late 18th Century punch bowl, 26.5cm diameter
Provenance: Provenance:- Dunkirk Manor
£60-80

276



A pair of Chinese barrel shaped garden stools, red ground and another two green stools, all with floral decoration, the tallest 50cm high (4)
Provenance: Provenance:- Dunkirk Manor
£100-150

280



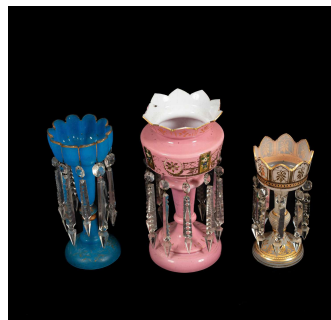
A cranberry glass lustre with white overlay to the top, heightened in gilt, together with a cranberry and white footed bowl enamelled with floral lattice decoration, the lustre 30cm high
Provenance: Provenance:- Dunkirk Manor
£60-80

277



A modern wall tapestry by Hines of Oxford, depicting a medieval scene with apple harvesting, 142cm high x 140cm wide
Provenance: Provenance:- Dunkirk Manor
£40-60

281



Three glass table lustres; matt blue, pink and white with gilt detail and decoration, the tallest 35cm high
Provenance: Provenance:- Dunkirk Manor
£60-80

278



Continental School, 20th Century
Venetian Panorama
oil on canvas
61cm x 91cm
Provenance: Provenance:- Dunkirk Manor
£100-150

CHORLEY'S

Cotswolds Heritage since 1862

Fine Art & Antiques Including The Principal Contents Of Dunkirk Manor, 23rd Jul,

282



A porcelain two-handled urn and cover, pear-shaped painted flowers, with foliate terminals and three spouts from grotesque masks, together with a French faience octagonal jardiniere, 20th Century, the urn 45cm high
Provenance: Provenance:- Dunkirk Manor
£80-120

283



A pair of clear glass storm lanterns engraved with ferns, and a smaller pair engraved with stylised leaves, the largest 34cm high
Provenance: Provenance:- Dunkirk Manor
£70-100

284



A pair of white opaline glass table lustres, each gallery enamelled with floral panels and hung with two tiers of prism drops, 35cm high
Provenance: Provenance:- Dunkirk Manor
£100-150

285



A Paris porcelain two-handed vase, red ground with birds and mask handles, together with a similar pair of quatreform scent bottles, mid 19th century, the vase 34cm high
Provenance: Provenance:- Dunkirk Manor
£70-100

286



A Flight porcelain inkwell, green ground painted with reserves of fancy birds, on gilt dolphin supports and triform base, 8cm high
Provenance: Provenance:- Dunkirk Manor
£150-250

287



A pair of English ironstone miniature vases and covers, circa 1820, probably CJ Mason, globular form painted with oriental flowers, gilt mask handles, 10cm high and a Minton plate painted with a Red Bream, titled to reverse
Provenance: Provenance:- Dunkirk Manor
£120-180

CHORLEY'S

Cotswolds Heritage since 1862

Fine Art & Antiques Including The Principal Contents Of Dunkirk Manor, 23rd Jul,

288



A silver gilt inkstand, S W Smith & Co, Birmingham 1918, of oblong shape with paw feet, 16cm wide x 10cm deep, approximately 159g
Provenance: Provenance: Dunkirk Manor
£70-100

289



An Anthony Redmile ostrich egg cup, silver plated mount on a claw stand, marked Redmile London, 19.5cm high and a pair of mother of pearl shell salts, with white metal mounts and stands, 12.5cm wide x 7cm high (3)
Provenance: Provenance:- Dunkirk Manor
£80-120

290



A collection of nine various inkwells to include Staffordshire, pearlware, Chinese porcelain and tole examples, the largest 14.5cm high
Provenance: Provenance:- Dunkirk Manor
£80-120

291



Thirty-seven decorative pill boxes, in enamel and porcelain
Provenance: Provenance:- Dunkirk Manor
£70-90

292



Two Royal Crown Derby porcelain trays, late 19th Century, the shaped edges with moulded foliate handles, printed in red and blue, 46cm long
Provenance: Provenance:- Dunkirk Manor
£80-120

293



A group of Herend porcelain, decorated with red Chinese bouquet and Queen Victoria patterns, to include vases, baskets, plate and box, the tallest vase 25cm high (11)

Provenance: Provenance:- Dunkirk Manor
£80-120

CHORLEY'S

Cotswolds Heritage since 1862

Fine Art & Antiques Including The Principal Contents Of Dunkirk Manor, 23rd Jul,

294



A quantity of artificial flowers, some by Bloom, in a variety of containers
Provenance: Provenance:- Dunkirk Manor
£40-60

309



A late Victorian silver inkstand, HA, Sheffield 1898, of navette shape, fitted with two silver mounted cut glass inkwells, 26cm wide, approximately 157g weighable
£80-120

310



An Art Deco silver cigarette box, W H Manton Ltd., Birmingham 1938, of rectangular form with slightly domed cover and ivory handles, 19cm wide, 11cm deep, 6cm high, another, Birmingham 1922, inscribed under the lid, 18cm wide and another, London 1923, with engine turning to the cover, 11cm wide
Ivory registration reference: 5NENUW5T
£200-300

311



A silver cigar cutter, William Manton, Birmingham 1985, with box opener to one end, the handle marked 'Peter', 15cm long, a silver handled shoe horn and two silver backed brushes (4)
£80-120

312



Seven silver decanter labels, various makers, Birmingham circa 1980, for Vodka, Whisky (2), Brandy (2), Sherry and Port and a wine pourer, Birmingham 1985
£150-200

313



A silver goblet, Bert Gordon, Birmingham 1969, initialled, 12cm high, approximately 197g and a silver trumpet-shaped vase, loaded, 20cm high
£80-120

CHORLEY'S

Cotswolds Heritage since 1862

Fine Art & Antiques Including The Principal Contents Of Dunkirk Manor, 23rd Jul,

314



An Art Deco silver framed mirror, Birmingham 1934, of stylised design, 28cm wide x 32.5cm high
£100-150

315



An Edwardian silver porringer Mappin & Webb, London 1903, crested, 19cm across handles, approximately 301g
£150-200

316



A set of ten American silver teaspoons, Gorham but also marked Shreve, Stanwood & Co, with decorative spade shaped terminals and a small ladle, approximately 157g
£100-150

317



A quantity of Christening silver, including a mug, London 1953, inscribed, 8cm high, two spoon and pusher sets, cased, knife fork and spoon, five coffee spoons and a sauceboat, approximately 354g weighable
£80-120

318



A circular silver pot, Henry Matthews, Birmingham 1897, repousse decorated with cherubs, 8cm high and another silver lidded pot, relief decorated with birds and flowers, the lid and pot showing different hallmarks, 6cm high, approximately 289g in total
£120-140

319



A quantity of silver to include a silver quaich, Sheffield 1934, a three-piece silver cruet set with blue glass liners, a rectangular silver lidded box and a plated sifter spoon, approximately 129g in total
£120-160

320



CHORLEY'S

Cotswolds Heritage since 1862

Fine Art & Antiques Including The Principal Contents Of Dunkirk Manor, 23rd Jul,

A matched set of eight silver soup spoons, William Hutton & Sons Ltd., Sheffield, various date marks and two other silver spoons (10) approximately 628g
£150-200

324



A small group of Art Deco silver, comprising a sugar basin and jug, Mappin & Webb, Sheffield 1932, a ladle, Sheffield 1933 and a pair of rectangular napkin rings, Sheffield 1932, approximately 630g
£150-200

321



An Edwardian silver hot water jug, Wilson & Sharp, Edinburgh 1907, pear-shaped with a wooden scroll handle, 23cm high, approximately 615g in total
£200-300

325



A three-piece silver tea set, Viner's Ltd, Sheffield 1930, scalloped edges, the teapot with ebony handle and finial, 14cm high, approximately 1135g in total
£300-500

322



An Edwardian silver bowl, JR, Sheffield 1909, of circular form with foliate and ribbed decoration, on four scroll feet, 16cm diameter approximately 374g
£100-150

326



A silver four-piece dressing set, Birmingham 1921, a set of six silver gilt coffee spoons of anointing spoon form, Levi & Salaman, London 1910, a set of mother-of-pearl handled fruit knives and forks and a Mappin & Webb asparagus dish with sauce boat
£80-120

323



An 18th Century style silver sauceboat, W&C Sissons, Sheffield 1935 and a sugar caster GH, Sheffield 1934, 17cm high, approximately 414g
£100-150

CHORLEY'S

Cotswolds Heritage since 1862

Fine Art & Antiques Including The Principal Contents Of Dunkirk Manor, 23rd Jul,

327



A Continental silver gilt Bible cover, import marks W M, London 1896, containing a Bible, the covers decorated with Biblical scenes, 12.5cm x 8cm
£100-150

328



A pair of George III silver candlesticks, Thomas & John Settle, Sheffield 1815, of fluted baluster column form, each on a circular foot, loaded, 17.5cm high
£200-300

329



A George III silver chamberstick, Rebecca Emes & Edward Barnard, London 1812, of circular shape with gadrooned border and conical snuffer, 14cm diameter, approximately 298g
£200-300

330



A George II silver coffee pot, maker marks rubbed, London 1749, of tapering form with domed cover and ebonised scroll handle, an engraved armorial to side, 24cm high, approximately 805g
£400-500

331



A George III silver caster, Hester Bateman, London 1784, of baluster form with acorn finial, 14cm high and a pair of silver cauldron salts, Hester Bateman, London 1782, with beaded rims, 6cm diameter, approximately 140g
£100-150

332



Three George III silver casters, including John Muns, London 1753 and Thomas Smith, London 1753, all of baluster shape, the tallest 11.5cm high, approximately 198g
£180-200

CHORLEY'S

Cotswolds Heritage since 1862

Fine Art & Antiques Including The Principal Contents Of Dunkirk Manor, 23rd Jul,

333



Three silver toddy ladles, all apparently unmarked, with twisted whalebone handles, the longest 37.5cm
£80-100

334



A silver Armada dish form ashtray, L&S, London 1972, and a Georgian silver cream jug, marks rubbed approximately 205g
£60-80

335



A silver mounted pen holder, William Vale & Sons, Chester 1841, wavy engraved detail on a circular base, 6.5cm high
£40-60

336



Eight fiddle pattern silver tablespoons, including a pair Richard Britton, London 1817, a pair John Lias, London 1817, a pair Charles Bolton, London 1847 and two others, approximately 556g
£200-300

337



Six George III Old English pattern silver dessert spoons, various including a pair by Peter, Ann & William Bateman, London 1802 and two by William Eley, William Fearn & William Chawner, 1808 and 1810, approximately 196g
£80-120

338



Nine George III silver teaspoons, George Smith & William Fearn, London 1796, with bright cut decoration to the terminals and a set of six teaspoons, Peter, Ann & William Bateman, London 1804, the terminals initialled W over BE, approximately 215g
£80-120

339



CHORLEY'S

Cotswolds Heritage since 1862

Fine Art & Antiques Including The Principal Contents Of Dunkirk Manor, 23rd Jul,

A quantity of Georgian and later silver flatware including a pair of thread pattern tablespoons George Smith & William Fearn, London 1790, three thread pattern dessert spoons, William Eley & William Fearn, London 1797, a pair of grapefruit spoons, Brook & Son, Edinburgh 1924 etc., approximately 528g
£180-220

340



A small quantity of silver and plate, including a set of eight teaspoons, makers mark only J&D, a set of six silver handled fruit knives, two silver salts, a plated wine funnel etc.
£80-120

341



A pair of William IV silver fiddle pattern tablespoons, B S, London 1836, initialled J, four silver coffee spoons and six silver handled fruit knives, approximately 211g weighable
£60-80

342



A pair of silver footed bonbon dishes, HM, Birmingham 1926, circular with pierced borders, 9cm diameter approximately 80g
£40-60

343



A set of six Art Nouveau silver buttons, Reynolds & Westwood, Birmingham 1901, of circular pierced form with stylised floral design, a Victorian silver nurse's buckle, Levi & Salaman, Birmingham 1894, of pierced form, 11cm wide, a plain rectangular buckle, WA, Birmingham 1902, an oval paste set buckle and two others
£100-150

344



A set of six silver and enamel coffee spoons Henry Clifford Davis, Birmingham 1957, the bowls with coloured enamel backs, the stems with coffee bean terminals and two further sets with coffee bean terminals, all three cased, approximately 110g
£70-100

345



A Victorian novelty silver watch stand, William Hutton & Sons Ltd., Sheffield 1900, of wishbone form on a loaded plinth inscribed and dated 1901, the plinth 8cm x 8cm, a notebook, the detached silver cover embossed a flower and a pair of faux tortoiseshell lorgnettes (3)
£50-70

CHORLEY'S

Cotswolds Heritage since 1862

Fine Art & Antiques Including The Principal Contents Of Dunkirk Manor, 23rd Jul,

346



A set of five 18th Century silver teaspoons, possible William Turken, makers mark and lion passant only, bright cut stems with crests, approximately 68g
£50-70

347



A set of four Victorian silver bonbon dishes, Birmingham 1897, of pierced embossed form, 12cm diameter, two similar oval dishes and four salts, lacking liners, approximately 236g
£120-180

348



A George III silver pepper pot, CH, London 1782, of baluster form on a square plinth, 14cm high, approximately 80g
£80-120

349



A George III swing-handled silver sugar basin, CC, London 1792, of navette shape with reeded swing handle, 16.5cm long, approximately 229g
£200-300

350



A pair of Scottish silver sauce ladles, Alexander Spence, Edinburgh, circa 1790, with Celtic points to the terminals, initialled K, a fiddle and shell pattern silver caddy spoon, London 1825 and another silver caddy spoon of shovel-form with a mother-of-pearl handle
£70-100

351



A silver vase, William Comyns, London 1912, trumpet-shaped, weighted, 18.5cm high, a smaller pair of bud vases, 10cm high, two napkin rings, etc.
£80-120

CHORLEY'S

Cotswolds Heritage since 1862

Fine Art & Antiques Including The Principal Contents Of Dunkirk Manor, 23rd Jul,

352



A group of five Swedish silver beakers, various, each of flared circular form with pricked foliate decoration, one by maker ADB, one SR, one CB and one with engraved initials and date 1801, the largest 10cm high, total weight approximately 364g
£200-300

353



A large quantity of Queen's pattern silver and silverplated flatware, various makers, London 1862, to include spoons, forks, silver handled knives and plate, 5612g, in an oak fitted canteen box, 51.5cm wide, with a mahogany reproduction canteen of three drawers on cabriole supports, 75cm wide, 47cm deep, 83cm high
Provenance:
£3,000-5,000

354



A Sheffield plate tea caddy of navette shape, with reeded swing handle and two hinged covers, 17.5cm wide, an oval four-pint soup tureen, cover and ladle, 39cm across handles, a pair of Sheffield plate candlesticks, 24cm high and a food dome
£80-120

355



A set of three Sheffield plated entrée dishes and covers, each of twin handled form with gadrooned borders to cover and base, two cover handles missing, the covers with crest and motto of the Dukes of Hamilton, 35.5cm x 22cm
£100-150

356



A set of twelve mother-of-pearl handled dessert knives and forks, the plated blades with floral decoration, in a fitted canteen
£30-40

360



A 9ct gold opal and sapphire ring, approximately 2.5g and a silver ring
£50-80

CHORLEY'S

Cotswolds Heritage since 1862

Fine Art & Antiques Including The Principal Contents Of Dunkirk Manor, 23rd Jul,

361



An 18K white gold diamond solitaire ring, with side stones, from Angelic diamonds with valuation certificate and GIE diamond grading report, the central diamond 0.59ct, colour grade F, clarity grade VS 1, cut grade very good, 3g in total, boxed
£400-500

362



Two Berlin wirework brooches, 19th Century, 5.5cm and 4.5cm wide
£100-150

363



A Berlin wirework/ironwork bracelet, 19th Century, of fine mesh links, the clasp a Neoclassical cameo on a polished steel ground, 19cm
£200-250

364



An oval memorial cameo pendant, 19th Century, carved portrait of a young boy with hair scroll to reverse, in a gold coloured mount, 5cm x 4cm
£30-50

365



A Berlin ironwork necklace, 19th Century, of circular design, approximately 59cm long
£80-120

366



A 9k gold twist chain necklace, 7g
£100-150

367



A 9ct gold chain link necklace, 30.5g
£400-600

CHORLEY'S

Cotswolds Heritage since 1862

Fine Art & Antiques Including The Principal Contents Of Dunkirk Manor, 23rd Jul,

368



**A 9ct gold chain with twin tasselled frontispiece, 41g
£600-800**

372



**A 9ct gold charm bracelet with various 9ct gold charms, approximately 31.5g
£400-450**

369



**A 1910 full sovereign mounted in a ring, approximately 8g
£300-350**

373



**Two 9ct gold lockets, approximately 7.5g
£80-120**

370



**A 1982 full sovereign mounted in a ring, approximately 9.5g
£300-350**

374



**An 18ct gold and diamond three-stone ring, 2g, and a 14K gold Oriental ring set with a green stone, approximately 4.5g
£150-200**

371



**A 9ct gold flat chain link necklace, approximately 20.5g
£250-300**

375



CHORLEY'S

Cotswolds Heritage since 1862

Fine Art & Antiques Including The Principal Contents Of Dunkirk Manor, 23rd Jul,

A 14K gold and citrine set ring and a 14K gold and smoky quartz set ring, approximately 12g in total (2)
£200-250

376



A pair of 14K gold and cultured pearl cluster earrings, approximately 4g
£80-120

377



A 14K gold smoky quartz pendant on a 14K gold chain, a 14K gold Chinese circular pendant and a rose quartz pendant on a 9ct gold chain, approximately 33.8g in total (3)
£350-400

378



A Chinese gold circular pendant on chain, with characters, indistinctly marked, possibly 22K, approximately 35g
£700-1,000

379



A 9K gold twist chain necklace and a similar 9K gold bracelet, approximately 9.5g
£100-150

380



A pair of 18K gold and opal stud earrings and a pair of Chinese stud earrings, indistinctly marked, approximately 6g in total
£70-100

381



Assorted costume jewellery, to include a silver charm bracelet, dress rings, Chinese tigers eye studs, a gold coloured and turquoise stone ring, Chinese and various beaded necklaces etc
£80-120

382



CHORLEY'S

Cotswolds Heritage since 1862

Fine Art & Antiques Including The Principal Contents Of Dunkirk Manor, 23rd Jul,

An 18ct white gold sapphire and diamond three-stone ring, set with an oval cut cornflower blue sapphire, flanked by two round brilliant cut diamonds, approximately 0.15ct each, ring size V½, total gross weight approximately 3.2g, together with an 18k white gold wedding band, ring size P½, total gross weight approximately 2.4g and a single row strand of cultured pearls, on an 18ct yellow gold clasp, broken
£200-300

383



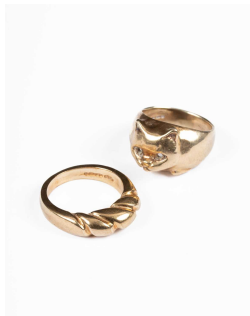
ARR Professor Yasuki Hiramatsu (Japanese 1926-2012), a silver-gilt brooch of textured finish, signed with monogram, marked Silver 950 Japan, 14cm long
Provenance: Lesley Craze Gallery
£200-300

384



An 18ct yellow gold ruby and diamond half eternity ring, set with five round brilliant-cut diamonds and five rubies, ring size J, total gross weight approximately 3.2g
£250-350

385



Two 9ct yellow gold dress rings, one cast as a cat, ring size J, total gross weight approximately 6.3g, the other size L, total gross weight approximately 6.8g
£150-200

386



Assorted gemstone jewellery, to include a silver and turquoise pendant necklace by Jane MacIntosh, a silver and green glass bead necklace, an amethyst and rock crystal necklace, a Victorian carnelian set brooch, a banded agate bead necklace and a pair of silver stud earrings cast as roses
£80-120

387



A white gold, jade and diamond dress ring, set with an oval cabochon approximately 10.8mm x 7.7mm, within a border of small diamonds, ring size M½, total gross weight approximately 5.8g
£200-300

388



Two cherry amber necklaces, each formed of graduated oval beads, the larger approximately 94g, the smaller approximately 38g
£150-200

CHORLEY'S

Cotswolds Heritage since 1862

Fine Art & Antiques Including The Principal Contents Of Dunkirk Manor, 23rd Jul,

389



A Baltic amber necklace of graduated circular beads, 47cm long, approximately 12g and three other bead necklaces
£100-150

390



An Indian mixed metal pendant of crescent shape, with green and yellow enamels, suspending a tassel drop
£100-150

391



A 14k gold mounted baton link bracelet, two jade rings and three bangles
£100-150

392



A 14k gold chain link necklace, marked 585, 28g

£700-750

393



An 18ct gold leaf brooch set with multiple synthetic pink sapphires, 6cm long, approximately 11g in total
£350-450

394



A 14k gold wedding band, marked 585, engraved to inside of shank and a 14k gold and citrine set ring, approximately 12g in total
£250-300

395



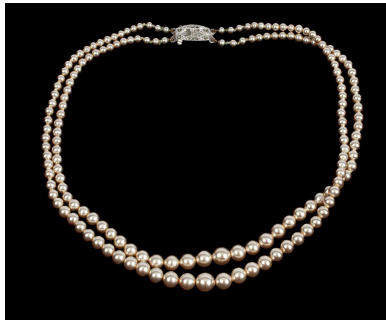
A 14k gold Homa wristwatch on a black leather strap, a 14K white gold mounted pendant set with a jadeite heart, a gold bangle marked 333, a white metal filigree bracelet, a silver filigree bracelet and other costume jewellery (7)
£100-150

CHORLEY'S

Cotswolds Heritage since 1862

Fine Art & Antiques Including The Principal Contents Of Dunkirk Manor, 23rd Jul,

396



A Rosita double strand of graduated simulated pearls with marcasite clasp, approximately 41cm

£120-180

397



A silver charm bracelet hung with a large variety of charms and coins, gross weight approximately 136g
£60-80

398



A 9ct yellow gold locket of lozenge shape on an unhallmarked yellow metal chain and a 15ct gold and seed pearl brooch of clover leaf form, total gross weight approximately 22.8g
£150-250

399



A pink topaz pendant of spider form on a yellow metal necklace, the snap marked 10, gross weight approximately 5.3g
£100-150

400



An 18ct yellow gold wedding band, approximately 2.3g, a Victorian 15ct gold and seed pearl dress ring, approximately 3.4g and multi gem set ring
£180-220

401



A sapphire and diamond square cluster ring, the emerald cut sapphire to a surround of twelve diamonds, on an 18ct gold shank, approximately 5.7g
£300-500

402



An 18ct yellow gold brooch Hans Georg Mautner, London 1972, of twisted tasselled form, 4cm long, approximately 22.8g
£600-800

CHORLEY'S

Cotswolds Heritage since 1862

Fine Art & Antiques Including The Principal Contents Of Dunkirk Manor, 23rd Jul,

403



A tri-colour 9ct gold necklace of alternating textured beads, 84cm long, approximately 23.1g

£600-800

404



A pair of 9ct gold and mother-of-pearl dress cufflinks, Deakin & Francis, each link centred by a seed pearl, approximately 5.6g
£80-100

405



A quantity of costume jewellery including silver cufflinks, marcasite, E.P.N.S. rattle of teddy bear form, coins, an Iraqi niello napkin ring, a single row of cultured pearls, papier-mâché snuff box, etc.
£100-150

410



A nickel cased Omega wristwatch, the white enamel dial signed Omega Swiss Made, with Roman numerals and a red enamelled 'XII', with subsidiary seconds, movement numbered 4998707, case number 5655014, 34mm diameter
£400-500

411



A French 18k gold cased wristwatch, the canted rectangular dial approximately 10mm, with Arabic numerals, fitted a jewelled movement, case number 1624, on a material bracelet, cased by Hartley, Albermarle St, London
£100-150

412



A gentleman's Omega Seamaster 120m Quartz wristwatch, on original steel bracelet, ref 196.0209, circa 1980, together with a Tissot Seastar watch lacking bracelet and 9ct gold Trebex wristwatch on an expanding bracelet, HM hallmarked Edinburgh 1951, with red Omega service case
£200-300

CHORLEY'S

Cotswolds Heritage since 1862

Fine Art & Antiques Including The Principal Contents Of Dunkirk Manor, 23rd Jul,

413



A Victorian 9ct rose gold cased open-faced pocket watch, the movement marked Oreba, case numbered 237331, the dial with Arabic numerals and subsidiary seconds, case diameter 5cm, approximately 76g and a small length of 18ct gold chain with T-bar, approximately 5.5g
£150-200

416



A Russian silver icon pendant, 19th Century, oval, silver mounted, depicting two saints, engraved and marked AC 84, 7cm long
£200-300

414



A 9ct gold Rotary wristwatch on a gold coloured Tessuflex strap, a Cyma wristwatch on a leather strap, marked to reverse 'Presented to W Harrison by Bowburn Committee Sept 1961', a gold coloured Omega wristwatch on a leather strap and three others (6)
£250-350

417



A Russian silver icon pendant, 19th Century, oval, silver mounted, depicting a saint on horseback possibly St. Michael, marked 84, 5.5cm long
£150-200

415



A Russian silver icon pendant, 19th Century, oval, silver mounted, depicting the Virgin Mary and Jesus, marked 84, 5cm long
£150-200

418



CHORLEY'S

Cotswolds Heritage since 1862

Fine Art & Antiques Including The Principal Contents Of Dunkirk Manor, 23rd Jul,

419



A silver mounted tortoiseshell paper knife/magnifying glass, Grey & Co., Chester 1929, 30.5cm long
£60-80

450



A woven cane garden suite, comprising four chairs and a table with glass top, the table top 105cm x 105cm
£80-120

451



A pair of woven cane armchairs with loose cushions and the matching footstools
£100-150

452



A staddle stone, 62cm in diameter x 75cm high
£200-300

453



Three painted cast iron garden lamp stands, the tallest 125cm high
£80-120

454



A riveted copper, 61cm diameter, 49cm high
£100-150

455



A reconstituted stone corbel with grotesque mask head to the front, impressed marks RD and 46 beneath, 46cm wide, 39.5cm deep, 29.5cm high, a reconstituted stone fountain head of grotesque head form and a reconstituted stone figure emblematic of Autumn, 77cm high
£150-200

456

A pair of cast iron gate posts of tapering form, with fluted corners and domed finials, one marked T Walker Engineer Tewkesbury, total height 217cm, above ground approximately 157cm
£200-300

CHORLEY'S

Cotswolds Heritage since 1862

Fine Art & Antiques Including The Principal Contents Of Dunkirk Manor, 23rd Jul,

460



A George II style Irish mahogany console table, 19th Century, the later sandstone top with a moulded edge and re-entrant corners, the fluted and floral roundel carved frieze centred by a carved Satyr mask above a shaped apron, the sides with shell carved details, on acanthus capped cabriole legs terminating in ball and claw feet, 153cm wide, 76cm deep, 82.5cm high
£600-800

461



A 19th Century American mahogany console table, the rectangular top above a shaped frieze with fluted and acanthus carved scroll supports, with a mirror back on a concave fronted plinth base, 140.5cm wide, 46cm deep, 89cm high
£400-600

462



A George II walnut kneehole desk the chevron inlaid and crossbanded caddy moulded top above one from frieze drawer and three short drawers to each pedestal enclosing a kneehole cupboard with an apron drawer above, on bracket feet. 79.5cm wide, 47.5cm deep, 79cm high
£300-500

463



A Victorian mahogany framed nursing chair, with balloon button back and seat in cream upholstery, carved front legs and frame
£30-40

464



A mahogany torchère, the reeded carved column on four carved legs with claw and ball feet, 101.5cm high
£80-120

465



A French bonheur du jour with gilt metal mounts and painted with scenes of musicians in garden settings, the fall front enclosing a writing surface and four drawers, 80cm wide, 41cm deep, 147cm high
£200-300

CHORLEY'S

Cotswolds Heritage since 1862

Fine Art & Antiques Including The Principal Contents Of Dunkirk Manor, 23rd Jul,

466



An early Victorian rosewood card table, the fold over top enclosing a blue baize playing surface on circular column and platform with four carved paw feet, 91.5cm wide x 45cm deep x 75cm high
£120-150

470



An Edwardian conversation seat of trefoil shape on turned fluted legs with castors, approximately 125cm wide
£200-300

467



A George II mahogany tea table, the half-round fold over top hinged to reveal a compartment below on turned legs with pad feet, 87cm wide x 43cm deep x 72.5cm high
£80-120

471



An early Victorian rosewood card table, the fold over top enclosing a green baize playing surface on reeded and carved column to a platform base, 89cm wide x 44cm deep x 75cm high
£150-200

468



An Art Deco style mahogany cabinet with a pair of sliding doors each with white metal handle on a plinth base, 124cm wide, 40cm deep, 110cm high
£100-150

472



A pair of French gilt framed open armchairs, with upholstered backs, arms and seats and a closely matching footstool
£300-400

469



An Art Deco style veneered fold over side table, with stylised undertier, 80cm wide, 60cm deep, 74cm high
£150-200

CHORLEY'S

Cotswolds Heritage since 1862

Fine Art & Antiques Including The Principal Contents Of Dunkirk Manor, 23rd Jul,

473



A pair of Art Deco tub chairs in the manner of Jules Leleu, in dark green upholstery, 86cm high

£200-300

474



A pair of Victorian mahogany hall chairs, the pierced scroll carved backs with floral motif over solid seats and turned supports, 88.5cm high
£80-120

475



A mahogany bedside cabinet, 19th Century, with gilt metal galleried top, single drawer with cupboard below on tapering supports, 31cm wide, 29.5cm deep, 96cm high
£70-100

476



An 18th Century style camel back sofa with scroll arms and loose seat cushion on square moulded and chamfered legs, united by H shaped stretchers 162cm wide x 80cm deep x 86cm high
£120-150

477



An Italian cabinet by Guido Zichele for Selfridges, the upper section fitted with adjustable shelves and flanked by three-quarter columns, the base enclosed by cupboard doors, 153cm wide, 58cm deep, 223cm high
£200-300

478



A late Victorian mahogany three-tier buffet, with label for J & B Blower Ltd., Complete House Furnishers, Shrewsbury, the tiers united by turned columns with ball finials, 120cm wide, 44cm deep, 110cm high
£150-200

479



A George III mahogany chest of four long graduated drawers, on bracket feet, 108cm wide, 56cm deep, 113cm high
£100-150

CHORLEY'S

Cotswolds Heritage since 1862

Fine Art & Antiques Including The Principal Contents Of Dunkirk Manor, 23rd Jul,

480



An Orkney Highland oak and woven rush back arm chair with square loose trap seat and square tapering legs united by square stretchers, stamped D. M. KIRKNESS, KIRKWALL, ORKNEY followed by initials R E with thistle between, 103cm high, 65cm wide, 45cm deep

Footnote: David Kirkness (1855-1936) was the pioneer of Orkney straw-back chair-making. In 1956 Reynold Eunson bought the workshop and carried on the tradition. He continued to stamp the chairs with the name of Kirkness but added his own initials of R and E flanking a thistle. The V&A Museum has an example made by each maker in its collections.

£800-1,200

481



An 18th Century Dutch walnut and marquetry centre table the top inlaid a central panel of floral designs entwined with arabesques and foliage within a foliate border and chequered edge, the S shaped scroll legs united by an inlaid stretcher, 107cm wide, 81cm deep, 77cm high

£800-1,000

482



A late 18th Century Chippendale period mahogany dressing chest of four drawers flanked by reeded columns, the top drawer with brushing slide enclosing an interior fitted a central reading slope with ratchet support and a dressing mirror to the reverse, numerous lidded compartments to the sides housing secret drawers and stationery trays etc., the drawers with swan neck brass handles, on ogee bracket feet, 94cm wide, 52cm deep, 79cm high

£1,800-2,000

483



An early Victorian mahogany extending dining table, fitted two extra leaves on reeded taper legs extending to 242cm wide, 121cm deep, 45cm deep

£300-400

484



Ten late 18th Century style mahogany dining chairs in the Hepplewhite manner, with oval backs and pierced and carved upright splats each set a central reeded urn flanked by rams heads having upholstered leather seats on square moulded legs, two armchairs 95cm high, 59cm wide, 47cm deep, eight single chairs 95cm high 52cm wide, 44cm deep

£500-700

CHORLEY'S

Cotswolds Heritage since 1862

Fine Art & Antiques Including The Principal Contents Of Dunkirk Manor, 23rd Jul,

485



A Louis XV style marble top console, surmounted by a mirror, the base fitted a drawer above a mirror back to a concave fronted plinth, 127cm wide, 45.5cm deep, 219cm high
£80-120

486



A George III style wing armchair, upholstered in studded green leather with buttoned seat, on moulded square chamfered front legs, 86cm wide, 75cm deep, 110cm high
£400-600

487



A 19th Century Swedish bench/settee with carved uprights to the back and sides, carved frieze and conformed legs, 209.5cm wide, 576cm deep, 96cm high
£800-1,200

488



An Irish pine dresser, the wavy cornice above three shelves, the base fitted two drawers above cupboards, 147cm, 46cm deep, 188cm high
£200-300

489



A large early 20th Century elm work bench with vice to each end, on square legs and trestle type feet, 231cm wide, 99cm deep, 80.5cm high
£300-500

490



A 17th Century oak side table the planked top above a single drawer on bobbin turned legs united by stretchers, 76cm wide, 55cm deep, 75cm high
£150-200

491



CHORLEY'S

Cotswolds Heritage since 1862

Fine Art & Antiques Including The Principal Contents Of Dunkirk Manor, 23rd Jul,

A 17th Century oak chest of small proportions, fitted with three drawers, on bun feet, 80.5cm wide, 54cm deep, 77cm high
£300-500

492



A 17th Century oak and walnut chest of four long panelled drawers on bun feet, 83cm wide, 54.5cm deep, 84.5cm high
£400-600

493



A pair of 19th Century copper hall lanterns, of tapering conical form, converted to electricity, 90cm drop
£800-1,200

494



A near pair of mirrors, each with painted frames, 112cm x 60cm and 100.5cm x 52cm
£80-120

495



A marble top console table with painted frame on sabre legs, 109.5cm wide, 36cm deep, 91.5cm high
£100-150

496



A George III oak and chequer crossbanded lowboy, fitted with three drawers above a shaped apron on turned legs with pad feet, 69.5cm wide, 44cm deep, 69cm high
£120-150

497



A Chinese lacquered side table, decorated with pagodas in landscapes, fitted a drawer on chamfered legs with corner brackets and united by an undertier, 51cm wide, 30cm deep, 88.5cm high
£150-200

CHORLEY'S

Cotswolds Heritage since 1862

Fine Art & Antiques Including The Principal Contents Of Dunkirk Manor, 23rd Jul,

498



A Florentine carved giltwood frame fitted with a mirror plate, 62.5cm x 73cm
£100-150

499



A Florentine gilt framed wall mirror the small oval plates to a surround of boldly carved leaves, 40cm x 29cm
£80-120

500



A pine chest of two short and three long drawers, turned wooden handles on a plinth base, 107cm wide, 47cm deep, 100cm high
£100-150

501



An oak gateleg table, 19th Century, frieze drawer at either end, on straight supports united by stretchers, 132.5cm wide, 57cm deep, 72cm high
£80-120

502



An oak child's chair/high chair on turned supports, 80cm high
£30-50

503



An oak refectory table, on straight supports, united by stretchers, 185.5cm wide, 74cm deep, 73cm high
£200-400

504



A pine kitchen table early 20th Century, rectangular on turned supports, 179cm wide, 87cm deep, 79cm high and a set of four pine chairs, 84cm high (5)
£200-300

CHORLEY'S

Cotswolds Heritage since 1862

Fine Art & Antiques Including The Principal Contents Of Dunkirk Manor, 23rd Jul,

505



A set of eight Hepplewhite style mahogany dining chairs 20th Century, comprising two armchairs and six side chairs, with wheat spray carved shield backs centred by a lyre splat, above serpentine front drop-in seats upholstered in cream fabric, on square tapering legs with recessed moulding details, seat height 46cm, arm height 69cm (8)
£120-180

506



A mid 20th Century Italian ceramic onion and artichoke centrepiece converted to a lamp, 42cm high (height of base without fittings)
£60-80

507



A set of five oak spindle back chairs, with rush seats (one carver and four singles), the carver 105cm high (5)
£100-150

508



A Carolean style high back arched walnut settee, upholstered double arched back, carved cabriole legs joined by stretchers, 131cm high
£300-500

509



A George III oak and mahogany crossbanded mule chest, the hinged lid over an arrangement of six dummy drawers and three small drawers, with quarter column corners, on bracket feet, 148.5cm wide, 52cm deep, 88cm high
£200-400

510



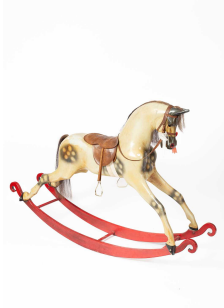
A pair of gilt wall mirrors in the Chippendale design, with pagoda crest, an openwork frame with entwined vines, 160cm high x 80cm wide
£2,500-3,000

CHORLEY'S

Cotswolds Heritage since 1862

Fine Art & Antiques Including The Principal Contents Of Dunkirk Manor, 23rd Jul,

511



A Victorian style painted rocking horse, dapple grey, on a red painted bow base, fibreglass, 182cm wide x 122cm high
£200-400

512



A pair of Regency mahogany shell back hall chairs, with inset painted Spencer crest, on sabre legs, 98cm high
£300-500

513



A Sheraton Revival satinwood Carlton House desk, painted with flowers and birds, an arrangement of drawers and cupboards, with a central leather lined writing surface, above three drawers on tapering supports, 132cm wide, 65cm deep, 97cm high
£600-800

514



A Victorian black lacquered papier-mâché tilt top table, floral decorated, 55.5cm in diameter x 70.5cm high
£100-150

515



A Victorian Aesthetic Movement revolving bookcase on cabriole supports, 50cm wide x 87cm high
£50-80

516



A Victorian painted cast iron sleigh style cot bed on casters, 70cm wide x 95cm high
£70-100

517



CHORLEY'S

Cotswolds Heritage since 1862

Fine Art & Antiques Including The Principal Contents Of Dunkirk Manor, 23rd Jul,

A 17th Century Italian walnut carved and panelled cassone with carved and painted central coat of arms, 168cm wide, 58.5cm deep, 56cm high
£300-500

518



A pair of Italian marble top console tables the D-shaped Siena marble tops on painted and gilded supports, the frieze with swags below and two wavy legs on hoof feet, 67cm wide, 29cm deep, 82.5cm high
£600-800

519



A 19th Century writing table, in the manner of Paul Sormani, the top with gilt brass three-quarter gallery and inset leather writing surface, fitted with a single drawer and with slide to each side on fluted tapering legs with ball feet, 74cm wide, 42.5cm deep, 77.5cm high
£600-800

520



A stained oak console table the frieze centred by two cherub masks on boldly carved cabriole legs with leaf scrolls to the knees and on claw and ball feet, 142cm wide, 78cm deep, 80cm high
£2,000-3,000

521



A Victorian rosewood centre table the shaped oval top on scroll carved supports centred by a finial, on similar scroll legs on castors, 137.5cm wide, 105cm deep, 73.5cm high
£400-600

522



An 18th Century mahogany lowboy the rectangular moulded edge top above a frieze drawer, on cabriole legs with slipper feet, 76cm wide, 50.5cm deep, 71cm high
£200-300

523



A satinwood and zebrano inlaid circular tilt top dining table by William Tillman the circular top with star inlay, on a gun barrel turned column with outswept tapering legs terminating in brass capping and castors, 153cm diameter, 75cm high
£500-600

CHORLEY'S

Cotswolds Heritage since 1862

Fine Art & Antiques Including The Principal Contents Of Dunkirk Manor, 23rd Jul,

524



A George III mahogany bachelor's chest the rectangular banded top with a ripple moulded edge above a brushing slide and four satinwood banded graduated drawers flanked by angled fluted pilasters, on bracket feet, 93cm wide, 49cm deep, 84.5cm high
£500-700

527



A 17th Century oak chest with three-panel hinged top over carved arcaded frieze and three panels to the front each carved lozenge motif, raised on stile supports, 113cm wide, 54cm deep, 64cm high
£80-120

525



A 19th Century mahogany serpentine chest the moulded edge top above three drawers with brass handles, on bracket feet, the locks marked 'W R Patent', 111cm wide, 58cm deep, 80cm high
£700-900

528



A 17th Century style oak sideboard the moulded top over four drawers with moulded panels and brass drop handles, the pair of solid doors below and half-turned baluster supports to the front, 131cm wide, 51cm deep, 77cm high
£200-300

526



A Georgian oak dresser having a set of shelves over a base with a moulded top over three cock-beaded frieze drawers with brass swing handles and three small drawers below arranged around an arcaded frieze, raised on turned front supports and a pot board base, 169cm wide, 42cm deep, 187.5cm high
£300-500

529



A Georgian oak dresser, the moulded top over three deep drawers with brass escutcheons and swing handles, raised on cabriole front supports, 181cm wide, 50cm deep
£300-500

CHORLEY'S

Cotswolds Heritage since 1862

Fine Art & Antiques Including The Principal Contents Of Dunkirk Manor, 23rd Jul,

530



A George III oak circular tilt top tripod table the circular top raised on a gun barrel column with tripod legs terminating in pad feet, 81cm diameter, 69cm high
£40-60

531



A 19th Century rosewood occasional table the circular top raised on a baluster turned column with galleried tier below and tri-form platform base on disc feet, 38.5cm diameter, 69cm high
£50-80

532



A 19th Century oak console table with solid slate slab top, the carved end supports with mask headed monopodia, united by a platform stretcher and on fluted scroll feet, 193.5cm wide, 100.5cm deep, 97.5cm high
Provenance: By repute, Clyne Castle, Swansea
£300-500

533



A pair of 19th Century mahogany plinth cupboards, adapted from a sideboard, each with single frieze drawer above a panel door enclosing drawers, 49cm wide, 44.5cm deep, 105.5cm high
£300-500

534



A Danish wall mirror, Randers Mobelfabrik, the rectangular frame enclosing a mirror plate, the base shaped and with an integrated purple glass vase, 20.5cm wide, 8cm deep, 65cm high
£100-150

535



A pair of green painted faux bamboo chairs, with rush seats
£70-100

CHORLEY'S

Cotswolds Heritage since 1862

Fine Art & Antiques Including The Principal Contents Of Dunkirk Manor, 23rd Jul,

536



A George Smith stool, upholstered in paisley design fabric, 95cm wide, 62cm deep, 39cm high
£300-500

537



A George Smith Lennagan pattern armchair upholstered in kilim design fabric, on square tapering front legs with castors
£500-700

538



A 19th Century gilt framed mirror, the frame with gadrooned rim and rosettes to the corners, fitted with a bevelled glass, 130cm x 97cm
£100-150

539



An Empire mahogany console table, the black marble top above a frieze drawer on column front legs to a platform base with concave front, 115cm wide, 45.5cm deep, 91cm high
£400-600

540



A pair of Chinoiserie decorated table lamps, each of column form, 68.5cm high including shades
£80-120

541



A 19th Century mahogany table, the cross banded top above a single drawer, the turned legs united by an undertier, 51cm wide, 37cm deep, 73cm high
£100-150

542



A French single drawer side table, with quarter veneered top on wavy square section legs, 55.5cm wide, 41cm deep, 72cm high
£80-120

CHORLEY'S

Cotswolds Heritage since 1862

Fine Art & Antiques Including The Principal Contents Of Dunkirk Manor, 23rd Jul,

543



A pair of lobed alabaster lamps with pleated shades, on black granite bases, the bases: 29cm diameter, 48cm high (excluding fittings), 79cm high including shades
£200-300

546



A 19th Century luggage stand, the bowed slatted top on turned legs and stretchers, 66cm wide, 45.5cm deep, 46cm high
£100-150

544



A Chinoiserie black painted centre table decorated with figures in a landscape, the circular top above a turned column raised on a trefoil concave sides base with scroll decorated feet, 79cm diameter, 72cm high
£150-200

547



A pair of faux bamboo carved chairs with rush seats, 87cm high, seat height: 45cm
£80-120

545



A grey painted wardrobe of small proportions 20th Century, the cornice above an arched panel door enclosing a pink painted interior with a hanging rail and three removable shelves, flanked by white painted pilasters, on turned feet, 108cm wide, 55cm deep, 176cm high
£80-120

548



A Venetian etched glass mirror with an oval mirror plate, 51cm wide, 96cm high
£60-80

549



CHORLEY'S

Cotswolds Heritage since 1862

Fine Art & Antiques Including The Principal Contents Of Dunkirk Manor, 23rd Jul,

A George III style stool the rectangular upholstered seat on moulded edge legs joined by stretchers, 93cm wide, 63cm deep, 42cm high
£100-150

550



An Edwardian mahogany and satinwood inlaid bureau bookcase the broken swan neck pediment above glazed panel doors on a bureau base, 99cm wide, 45.5cm deep, 217cm high
£300-500

553



A 19th Century mahogany writing table the superstructure with a three quarter gallery top above two glazed doors flanking a central open shelf section above three drawers, the desk with a rectangular boxwood edged top above a leather inlaid brushing slide and a long frieze drawer, on square tapering legs, 99.5cm wide, 54.5cm deep, 129cm high
£150-200

551



A 19th Century two-section campaign chest with countersunk brass handles, fitted two short over three long drawers on turned feet, 104cm wide, 50cm deep, 119.5cm high
£600-800

554



An Edwardian mahogany and inlaid display cabinet, enclosed by glazed panel doors on cabriole legs, 111cm wide, 37cm deep, 182.5cm high
£80-120

552



A Victorian rosewood and burr walnut work table, the canted rectangular top with lozenge design parquet inlay above a fitted drawer and a work basket, on moulded legs with knurl feet on castors, 64cm wide, 46cm deep, 69cm high
£200-300

555



A Regency mahogany work table, the hinged top above a dummy drawer and a fitted drawer on square tapering legs united by an undertier, 43cm wide, 35cm deep, 73cm high
£150-200

CHORLEY'S

Cotswolds Heritage since 1862

Fine Art & Antiques Including The Principal Contents Of Dunkirk Manor, 23rd Jul,

556



A George III style Chinoiserie Pembroke table, 20th Century, the top of serpentine outline on reeded legs united by an under tier, 116.5cm wide when open, 91.5cm deep, 67.5cm high
Provenance: Provenance - Dreweatts
Hollycombe House 15-16 June 2021 lot 112
(Supplied by Robert Kime)
£600-800

559



A 19th Century flame mahogany sideboard by Cowtain & Sons Ltd. with serpentine front above a frieze drawer centred by a swag motif and flanked by a cupboard and a deep drawer, on fluted tapering legs, 199cm wide, 74cm deep, 99cm high
£400-600

557



An Edwardian mahogany and inlay half-round display cabinet, the glazed upper section above a cupboard on square tapering legs united by an undertier, 91cm wide, 42cm deep, 185cm high
£300-500

560



A low sofa by Kravet, with square back on square front legs, 193cm wide, 87cm deep, 76cm high
£200-300

558



ARR A Riva 1920s dining table in American black cherry wood, the rectangular top on square legs, 183cm long, 108cm wide, 76cm high
£600-800

561



A circular breakfast table in the manner of Eero Saarinen, 101.5cm diameter, 74cm high
£300-500

CHORLEY'S

Cotswolds Heritage since 1862

Fine Art & Antiques Including The Principal Contents Of Dunkirk Manor, 23rd Jul,

562



A large oval Ottoman type stool upholstered in an oatmeal fabric and on square tapering legs, 116cm long, 61cm wide, 48cm high
£150-200

563



An Andrew Martin doll's house cabinet the upper section fitted as a bookcase, on a base of two short and one long drawer, 117cm wide, 46cm deep, 216cm high
£400-600

564



A modern bone inlay desk, fitted with five drawers around a kneehole on square legs, 142.5cm wide, 56cm deep, 77cm high
£400-600

565



A pair of Pickering wing armchairs of generous proportions by Chaddock, upholstered in green velvet, the squared wing backs above loose cushion seats each with a kidney pillow, with turned wooden arm supports, turned legs joined by stretchers, 78cm wide, 119cm high, Seat Height: 54cm
£300-500

566



A three-seater sofa by The Hickory Chair Co. with a shallow button back, scroll arms and triple cushion seat, on a wood frame base with shaped feet, 223cm wide, seat height: 44.5cm
£300-500

567



A low Chinese style coffee table, the top decorated phoenix and dragon etc, 119cm wide, 61cm deep, 34cm high
£100-150

568



A pair of skirted Lee Jofa tub shaped armchairs each upholstered in pale peach patterned fabric
£300-500

CHORLEY'S

Cotswolds Heritage since 1862

Fine Art & Antiques Including The Principal Contents Of Dunkirk Manor, 23rd Jul,

569



A circular table of stepped hourglass shape in the manner of Carlo de Carli, 61cm diameter x 63cm high
£200-300

570



A Hancock & Moore bench with leather pad seat on square tapering legs, 144cm wide, 56cm deep, 46cm high
£100-150

571



A pair of Council serpentine fronted bedside tables, each fitted with a frieze drawer above, 86cm wide, 50.5cm deep, 71.5cm high
£150-200

572



A grey leather club armchair by Hancock & Moore, with button back and leather studded seams on splayed tapering front legs, 85cm high

£150-200

573



A Gothic style giltwood mirror the moulded frame enclosing an antiqued mirror plate with lobed astragalus, 120cm diameter
£300-500

574



A pair of BoConcept 'Fly' armchairs designed by Anders Norgaard, with leather upholstery on brushed steel legs
£300-500

575



A pair of upholstered and grey painted occasional chairs the arched back upholstered in pattern linen with close nail trim, above a pale pink velvet upholstered seat, with Greek key decoration to the seat rail, on roundel capital and fluted tapering legs, 59cm wide, 108cm high, seat height 48cm
£60-80

CHORLEY'S

Cotswolds Heritage since 1862

Fine Art & Antiques Including The Principal Contents Of Dunkirk Manor, 23rd Jul,

576



A tapering oak open bookcase, 91.5cm wide, 36cm deep, 167.5cm high
£60-80

577



A marble top console table, the rectangular top above a frieze drawer with lion mask handles with column supports on a plinth base, 99cm wide, 41cm deep, 88cm high
£100-150

578



A set of four dining chairs by Kravet, with button upholstered backs and leather seats on square tapering front legs
£80-120

579



A canvas covered chest of drawers with leather trim and handles, fitted with an arrangement of seven drawers, 143cm wide x 46.5cm deep x 91.5cm high
£100-150

580



ARR A Julian Chichester Temple console table, with mirrored top and sides, 130cm wide, 35cm deep, 85cm high
£100-150

581



A Kravet Tarragon tub chair with an upholstered back and seat in greek key patterned fabric, on square tapering front legs, 82cm high
£100-150

582



A modern console table with mirrored top on coiling metal supports, 112cm wide, 85cm high
£80-120

CHORLEY'S

Cotswolds Heritage since 1862

Fine Art & Antiques Including The Principal Contents Of Dunkirk Manor, 23rd Jul,

583



A set of six oak ladder back chairs with rush seats
£100-150

584



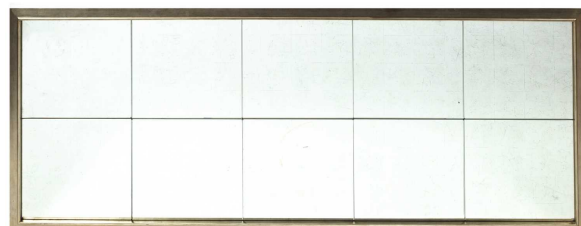
A circular two-tier table by Bill Sofield for Baker,
71.5cm diameter, 76.5cm high
£80-120

585



A Regency pier glass, the frieze centred by a lion mask within a wreath, the rectangular plate flanked by twisted columns, 147cm high, 99.5cm wide
£300-500

586



A modern mirror of ten panes with bevelled edge in a gilt frame, 175cm x 75cm
£80-120

587



ARR A Julian Chichester Dakota table in the manner of Saarinen, the wooden top on a metallic base, the oval top 244cm x 122cm
£400-600

588



A textured metal framed console table, lacking top, 119.5cm wide, 40cm deep, 80cm high
£60-80

589



A pair of Malibu bedside tables by Mitchell Gold & Bob Williams, fitted with a single drawer, 87cm wide, 48.5cm deep, 69cm high
£100-150

CHORLEY'S

Cotswolds Heritage since 1862

Fine Art & Antiques Including The Principal Contents Of Dunkirk Manor, 23rd Jul,

590



Giancarlo Piretti (1940-) for Castelli four 'Pila' folding chairs, chrome and plastic, 78cm high
£200-300

591



A William Tillman mahogany and satinwood breakfront sideboard, three frieze drawers, with four cupboard doors below, flanked by fan patera over fluted pilasters, raised on shaped feet, 157cm wide, 41cm deep, 94cm high
£200-300

592



A rectangular wicker basket, 131cm wide, 50cm deep, 44cm high
£50-80

593



A pair Regency style black and gilt painted torchères, circular tops to tripods supports each with hoof terminals, 29cm in diameter x 126cm high
£200-400

594



A Victorian ebonised and contrepartie brass inlaid and brass mounted display cabinet, the rectangular top above a brass inlaid frieze, above two arched panel glazed doors enclosing two shelves, flanked by brass inlaid pilasters with applied brass capitals, on a plinth base, 112cm wide, 33cm deep, 115cm high
£300-500

595



A George III style mahogany D-end card table, the fold over top with a reeded edge on square tapering legs, 90cm wide, 45cm deep, 73.5cm high
£60-80

596



CHORLEY'S

Cotswolds Heritage since 1862

Fine Art & Antiques Including The Principal Contents Of Dunkirk Manor, 23rd Jul,

A George III mahogany extending twin pedestal dining table, the D end top accommodating one extra leaf, on turned supports with downswept reeded legs terminating in brass capping and castors, 234cm long (extended) 175cm long (unextended), 125cm deep, 74cm high
Provenance: Grosswood Antiques, South Audley Street, London
Footnote: *Together with a certificate of Authenticity dated July 1980 from Grosswood Antiques 53/54 South Audley Street*
£150-250

607



A Bessarabian style floral kilim with Gol Farangh Decoration, 306cm x 216cm
£200-300

605



A 'Ziegler' Mahal carpet of near square shape, West Persia, circa 1890, the indigo field of scrolling vines centred by a sky-blue and brick red pendant medallion with brick red spandrels, framed by an ivory palmette and meandering vine and leaf border, 277cm x 295cm
£2,000-3,000

608



A modern wrapped Sisal carpet 302cm x 245cm
£80-120

606



A Shiraz rug South West Persia, mid 20th Century, madder field with a large abrashed charcoal medallion flanked by horse head capital polychrome columns, 239cm x 168cm
£200-300

609



A Kashguli Gabbeh rug South West Persia, circa 1980, the abrashed soft madder field centred by a square chequered medallion and framed by abrashed indigo borders, 128cm x 160cm
£200-300

610



CHORLEY'S

Cotswolds Heritage since 1862

Fine Art & Antiques Including The Principal Contents Of Dunkirk Manor, 23rd Jul,

A Karadja carpet North West Persia, circa 1900, the madder field of angular vines with palmettes and serrated leaves centred by an indigo pendant medallion with similar ivory spandrels and madder and abraded sky blue secondary spandrels, framed by an indigo flowerhead and slanted leaf border, 428cm x 340cm
£2,000-3,000

611



A Belouch prayer rug North East Persia, the sand field of serrated leaves surmounted with a rectilinear mihrab, with kilim ends, 138cm x 88cm
£200-300

612



A Belouch Soumakh technique and flatwoven Soffreh North East Persia, the camel field of candelabrum motifs with flowering tree borders and geometric end stripes, 136cm x 121cm
£150-250

613



A Kizil Ayak prayer rug West Turkestan, the deep madder field with of palmette motifs and four quartered Erasi type guls, framed by a chequerboard border of geometric motifs, 130cm x 87cm
£150-250

614



An Afshar Soffreh South West Persia, the abraded raspberry field of three serrated medallions in indigo and pale pistachio, framed by a serrated border and zig zag ivory vine border, 125cm x 122cm
£200-300

615



A Luri kilim South West Persia, the abraded madder field of diagonal rows of stepped polychrome medallions containing hooked motifs, with an ivory and charcoal skittle border with striped kilim ends, 238cm x 148cm
£250-350

616



A Kurdish rug the polychrome striped chevron field framed by madder octothorp borders and flanked by meandering vine and floral guardstripes, 224cm x 122cm
£300-500

CHORLEY'S

Cotswolds Heritage since 1862

Fine Art & Antiques Including The Principal Contents Of Dunkirk Manor, 23rd Jul,

617



A Tekke rug West Turkestan, the burgundy field of three Salor type guls framed by multiple borders and with serrated leaf endstripes, 120cm x 90cm
£120-180

620



An Ersari rug the brick red field with two rows of five quartered guls, framed by a geometric motif border with kilim ends, 124cm x 76cm
£100-150

618



An unusual North West Persian rug with a central indigo band of polychrome guls and humanoid motifs framed by nokeh guards, flanked by two panels with indigo borders, two stepped medallions, framed by ivory stellar borders, one panel with inscription and dated 1230 (circa 1910), 175cm x 143cm
£300-500

621



A Kashgai flatweave and embroidered hanging the madder field with an all over design of polychrome birds, framed by an ivory border and chequered flowerheads endstripes, 172cm x 145cm
£100-150

619



An Afshar long rug South West Persia, late 19th Century, the indigo field with an all over design of both and 'samovar' motifs centred by an ivory lozenge medallion, framed by multiple striped borders with ivory bird motif guardstripes, with original polychrome striped kilim ends, 267cm x 148cm
£500-700

622



A Savonnerie design carpet mid 20th Century, the plain ivory field centred by an oval laurel wreath framed medallion with ribbon ties and centred by a floral bouquet, framed by a powder blue border with oval vignettes of ribbon tied bouquets of flowers with flowering laurel surrounds, 492cm x 347cm
£100-200

CHORLEY'S

Cotswolds Heritage since 1862

Fine Art & Antiques Including The Principal Contents Of Dunkirk Manor, 23rd Jul,

623



A Tabriz carpet North West Persia, late 20th Century, the indigo field of Herati design centred by a lobed ovoid pendant medallion and similar spandrels framed by a rosette and curled leaf border, one end with a signature cartouche, 296cm x 201cm
£200-300

624



A Tabriz carpet North West Persia, 20th Century, the indigo field with an all over Herati design centred by a lobed, ovoid pendant medallion and similar graduated spandrels, framed by an indigo border of palmettes and scrolling vines, 293cm x 204cm
£200-300

625



A Kazak 'Lori Pambak' rug South Caucasus, late 19th Century, the madder field centred by an indigo hexagonal hooked medallion containing a double pendant motif with two further similar ivory medallions, framed by a charcoal flowerhead border and zigzag guardstripes, 217cm x 134cm
£70-100

626



A fawn tiger print rug possibly Afghanistan, 151cm x 113cm and a Chinese pictorial rug, the ivory field with a landscape of cranes and deer, 138cm x 71cm (2)
£150-250

627



An Afghan Gabbeh rug late 20th Century, the field of polychrome lozenges with arrowhead and striped designs flanked by a pale ivory border and polychrome corners, 198cm x 151cm
£100-200

628



A Tabriz rug, North West Persia, the pale pink field centred by an indigo pendant medallion and framed by an indigo scrolling vine and palmette border, 148cm x 106cm, together with a faded tapestry hanging, China, with a floral oval cartouche medallion and rocaille borders, 277cm x 180cm
£50-70

CHORLEY'S

Cotswolds Heritage since 1862

Fine Art & Antiques Including The Principal Contents Of Dunkirk Manor, 23rd Jul,

629



A Bakhtiar rug Persian Kurdistan, the salmon pink field of floral vines centred by an ivory pendant medallion and cobalt blue spandrels, framed by an ivory palmette border, 201cm x 150cm
£100-200

632



A Heriz rug North West Persia, the soft burgundy field centred by an indigo cruciform pendant medallion, framed by an indigo border of serrated leaves and rosettes, 230cm x 143cm
£250-350

630



A small Kashgai carpet South West Persia, the raspberry red field of serrated leaves, ornimorphic motifs and flowerheads centred by an ivory lozenge medallion with turtle pendants, framed by similar sea blue spandrels and framed by a polychrome hexagon motif border, 258cm x 166cm
£350-450

633



An Isfahan carpet Central Persia, the ivory field centred by a madder pendant medallion, blue spandrels and a raspberry red palmette border, 405cm x 285cm
£700-1,000

631



A Bakhtiar rug West Persia, the pale brick red field of Herati design centred by an indigo pendant medallion, with ivory spandrels and framed by burgundy border of reciprocal palmettes, 211cm x 129cm
£200-300

634



A Malayir carpet West Persia, the indigo field with an all over Herati design, framed by a strawberry red samovar border, 260cm x 158cm
£300-500

CHORLEY'S

Cotswolds Heritage since 1862

Fine Art & Antiques Including The Principal Contents Of Dunkirk Manor, 23rd Jul,

635



A Ziegler design carpet India, 20th Century, the madder field of bold palmettes and cloudband motifs framed by and golden palmette and scrolling vine border, 367cm x 273cm
£400-600

636



An Afghan carpet of Persian design the abrashed sea green field of floral vines centred by a soft sand pendant medallion, framed by an ivory border, 270cm x 185cm
£200-300

637



Two Afghan rugs the larger with a wine red field with an all over cartouche design, framed by a repeating lozenge motifs border, 150cm x 107cm; the smaller with a strawberry red field centred by two lobed medallions, 119cm x 78cm (2)
£100-150

638



A Kazak design rug and two others the largest with a raspberry red field of hooked motifs and varied flowerheads centred by an indigo medallion, framed by an ivory rosette and meandering vine border, 181cm x 129cm, 95cm x 67cm, 90cm x 61cm (3)
£120-180

639



A Shiraz rug South West Persia, the aubergine field of flowerheads centred by a red tortoise motif medallion, framed by red spandrels and a narrow ivory border, 163cm x 121cm
£70-100

640



Three Gabbeh rugs South West Persia, the largest with an abrashed sea blue field of geometric and ornomorphic motifs, 143cm x 109cm; together with two smaller rugs 110cm x 86cm and 91cm x 63cm
£100-150

CHORLEY'S

Cotswolds Heritage since 1862

Fine Art & Antiques Including The Principal Contents Of Dunkirk Manor, 23rd Jul,

641



Two Anatolian rugs the larger with a pale brick red field framed with ivory and pistachio spandrels, framed by an ivory and pale sand border of meandering vines, 198 x 109cm; the other of Caucasian design with a brick red field of stellar motifs centred by an ivory medallion and framed by an ivory border or serrated leaves, 113cm x 109cm (2)
£60-80

642



A Ziegler design rug Pakistan, 20th Century, the pale madder field with an all over design of palmettes and scrolling vines, framed by an ivory palmette border, 241cm x 169cm
£200-300

643



A Karabagh runner South Caucasus, circa 1920, the abrashed indigo field of zoomorphic and ornimorphic motifs centred by a column of polychrome stepped medallions, framed by raspberry spandrels of stellar and flowerhead motifs, framed by an abrashed cobalt blue border of flowerheads and serrated leaves, 463cm x 120cm
£600-800

644



An Afghan rug 20th Century, the pale wine red field with three 'Elephant foot' guls, framed by trellis and flowerhead borders, 192cm x 102cm
£60-80

645



A Tekke Bokhara rug West Turkestan, mid 20th Century, the chestnut field of three rows of six quartered Tekke guls, framed by a peach geometric medallion border and hooked lozenge motif endstipes, 185cm x 130cm
£100-150

646



A Belouch long rug North East Persia, early 20th Century, the brick red field with six serrated guls, framed by a similar border of angular hooked vines, 248cm x 122cm
£300-500

CHORLEY'S

Cotswolds Heritage since 1862

Fine Art & Antiques Including The Principal Contents Of Dunkirk Manor, 23rd Jul,

650



A Gentleman's frock coat, early 20th Century, blue with cream and lace cuffs, cream pockets and wirework embroidery, silk lining, the coat 107cm long approx. and a cream waistcoat (2)
Provenance: Made for Lewis Einstein diplomat, historian and art collector, for a fancy dress party/masquerade pre WW2
£100-150

651



A Gentleman's frock coat, early 20th Century, velvet brocade, silk lining, length of coat 116cm approx. a floral waistcoat, both with cut steel buttons, and a pair of cream trousers with Phelps & Co. India buttons (3)
Provenance: Made for Lewis Einstein diplomat, historian and art collector, for a fancy dress party/masquerade pre WW2
£100-150

652



A set of dessert doilies "Sketches of a Few Gloucestershire and Border Houses" by Georgina E. Chester-Master in original box with lists of houses
£20-30

653



A needlework tapestry sampler, ' Rachel Farmer's work aged nine 1831, Oswestryonal School', stitched within a floral border, a stag, a bee and trees and the motto 'Come O my Saviour, come away Into my soul descend, No longer from thy creature stay, My author and my end', 49cm x 44cm
£150-200

654



A quantity of lace samples, crochet, needlework books, a needle tin and various accessories
£50-80

655



A quantity of dress patterns, mainly 1980s, approximately thirty
£50-80

CHORLEY'S

Cotswolds Heritage since 1862

Fine Art & Antiques Including The Principal Contents Of Dunkirk Manor, 23rd Jul, 2024

656



Three Turkish twill wool fabric hangings, 19th Century, striped in green and reds, 125cm high
£100-200

657



A Haiti wall hanging, Morocco, late 19th Century, each mihrab a damask fabric in Classical patterns, likely French, with a floral chainstitch lower band and an upper velvet and damask mihrab band, 690cm x 180cm
£400-600

658



Three Regency shawls, one in green checked fabric, one cream with green stripes and the other green with cream and gold thread, one with old Christies lot label Parham Park 13 and 14 May 1996 Lot no. 868, the largest green checked shawl, 248cm x 59cm (3)
£100-150

659



Assorted fans to include a bone fan, 24cm, a Spanish fan with black painted guards, watercolour on silk dancing scene with embroidered detail, 35cm, a gold sequined fan, a blue sequined, a bone and black lace fan etc (6)
£80-120

660



Assorted bonnets to include a black velvet bonnet with black beading, two lace bonnets, a floral embroidered bonnet and a black satin bonnet (5)
£70-100

661



A green velvet tieback, 17th Century, flared ends, 146cm long
£120-180

CHORLEY'S

Cotswolds Heritage since 1862

Fine Art & Antiques Including The Principal Contents Of Dunkirk Manor, 23rd Jul,

662



A cream silk runner, 19th Century, with applique flowers and leaves, sequins, pearls and coloured stones, 104cm long
£80-120

666



A set of nine graduating needlework table mats, 19th Century, floral decorated with red and black borders, the largest 37.5cm x 30.5cm and the smallest 23.5cm x 17.5cm and three other mats with green tassel borders, leaf decorated, the largest 35cm x 26cm and the two smaller 29.5cm x 21cm (12 in total)
£200-250

663



A collar, 18th Century, wirework and floral crewel work flowers, laid on cream/gold silk, 38cm long approx.
£150-180

667



A silk embroidered triangular panel, possibly a stomacher, 19th Century, with floral decoration and gilt thread, 46cm long
£100-150

664



A velvet and gold thread runner, 18th Century, leaf decorated, with tassel edges, 74cm x 40cm
£70-100

668



A fine Nurata Suzani Uzbekistan, the ivory field of two floral sprays, framed by a lattice and serrated leaf and flowerhead border flanked by guardstripes, 195cm x 124cm (possibly reduced in size)
£1,000-1,500

665



A silk embroidered panel, early 18th Century, possibly an altar frontal, a central sun surrounded by cherubs and flowers, 64cm wide x 146cm long
£300-500

CHORLEY'S

Cotswolds Heritage since 1862

Fine Art & Antiques Including The Principal Contents Of Dunkirk Manor, 23rd Jul,

669



**A silk embroidered panel, 18th/19th Century, green and cream ground floral decorated, with gold tassels, 53.5cm x 100cm long
£70-100**

670



**A silk embroidered panel, 18/19th Century, in cream and pinks with silver tassels, 55cm x 100cm
£70-100**

671



**A silk and velvet embroidered runner, 18th Century, a floral panel mounted onto a velvet backing, with tasselled edges, 112cm x 39.5cm
£250-300**

672



**A roll of brocade fabric, possibly French, 19th Century, unused, in pinks and floral decorated, 110cm long x 55cm wide
£80-120**

673



**An unused roll of brocade fabric, late 18th/early 19th Century, blue and pink flowers, 54cm wide x 114cm long and another roll of unused fabric, with yellow/gold embroidery, 50cm wide
£80-120**

674



**A long black satin panel, late 19th/early 20th Century, embroidered with flowers and butterflies, with an applique flower to one end, 400cm long x 22.7cm wide
£100-150**

675



**A Delhi embroidered shawl, 19th Century, brown netting with orange and yellow silk flowers, 59cm x 270cm
£200-250**

CHORLEY'S

Cotswolds Heritage since 1862

Fine Art & Antiques Including The Principal Contents Of Dunkirk Manor, 23rd Jul,

676



An Indian Kashmiri shawl, 20th Century, black ground with paisley patterned ends and border, 286cm x 140cm
£60-90

677



An Indian Kashmiri shawl, early 20th Century, paisley patterned multi-coloured in reds, oranges and greens, 172cm x 185cm
£70-100

678



An Indian Kashmiri shawl, early 20th Century, cream with central floral medallion and a paisley border, 154cm x 162cm
£70-100

679



An Indian paisley shawl, 20th Century, green central medallion in reds and greens, 160cm x 344cm
£70-100

680



A cream floral embroidered shawl, 140cm x 140cm, a cream shawl with blue scrolling border, 160cm x 160cm and a printed paisley shawl, in browns and purples, 158cm x 342cm (3)
£70-100

681



An Indian Kashmiri shawl, early 20th Century, paisley patterned multi-coloured with cream tassels, 155cm x 352cm.
£70-100

682



Two Indian printed paisley shawls, late 19th/early 20th Century, cream ground paisley patterned, 174cm x 174cm and a printed silk shawl (3)
£150-200

CHORLEY'S

Cotswolds Heritage since 1862

Fine Art & Antiques Including The Principal Contents Of Dunkirk Manor, 23rd Jul,

683



An Indian Kashmiri shawl, 20th Century, in paisley burgundy, reds, greens and blues, 294cm x 294cm
£70-100

684



An Indian Kashmiri shawl, early 20th Century, paisley patterned in greens, yellows and reds, tasselled edges, 336cm x 320cm
£70-100

685



An Indian shawl, 20th Century, red with applied paisley border, 56cm x 246cm, a red shawl with a floral embroidered border and a pair of paisley curtains (4)
£60-80

686



An Indian Kashmiri shawl, early 20th Century, paisley patterned, cream ground with multi-coloured border, 166cm x 320cm
£70-100

687



An Indian Kashmiri shawl, early 20th Century, paisley patterned red ground with multicoloured tassels, 158cm x 316cm
£70-100

688



An Indian Kashmiri shawl, early 20th Century, paisley patterned in greens, reds, blues and yellows, 150cm x 320cm
£70-100

689



A block printed paisley shawl, late 19th/ early 20th Century, cream ground in navy, orange and green paisley pattern, 174cm x 174cm
£70-100

CHORLEY'S

Cotswolds Heritage since 1862

Fine Art & Antiques Including The Principal Contents Of Dunkirk Manor, 23rd Jul,

690



An Indian printed shawl, 19th Century, cream with pink, blue and green paisley pattern, 168cm x 318 cm
£50-80

694



An Indian Kashmiri shawl, early 20th Century, paisley patterned worked in shades of red, blue, green and beige, with red medallion to centre, 150cm x 314 cm
£70-100

691



An Indian dark green shawl, early 20th Century, with applique paisley border, 162cm x 324cm
£50-80

700



A brass cased carriage clock, early 20th Century, the white enamel dial bearing Roman numerals, drum barrel, with glass sides, back and top, with key, 13.5cm high (including handle)
£60-80

692



A silk shawl, late 19th/early 20th Century, printed floral checked pattern with dyed blue tassels, 153cm x 146cm
£50-80

701



A French tortoiseshell and gilt metal mounted mantel clock, with enamel Arabic dial, the Marti movement striking on a gong, with cushion top case, swing handle, turned finials over arched grill sides and turned feet, 37.5cm high (handle up)
£300-500

693



CHORLEY'S

Cotswolds Heritage since 1862

Fine Art & Antiques Including The Principal Contents Of Dunkirk Manor, 23rd Jul,

702



A Victorian mahogany cased bracket clock, the movement signed Thomas Best, London and fitted a twin fuse movement striking on a bell, the circular dial with Roman numerals in an arched case with carry handle, 27cm wide, 18cm deep, 35.5cm high (handle up)
£400-600

703



A thirty-hour yew wood long cased clock with a 35cm dial, signed M C Garry, Stockport, with subsidiary seconds dial, the silvered chapter ring surrounded by floral decoration to the corners, 58cm wide, 29cm deep, 235cm high,
£500-600

710



A nest of five Chinese export black lacquer trays 19th Century, with gilt painted decoration of figures before buildings in a landscape, with floral cartouche painted borders with Daoist symbols, the largest 62cm x 49.5cm
£200-300

711



An early 20th Century novelty mustard tin, J & J Colman Ltd., in the form of a table casket, sarcophagus cover, the sides embossed with Classical figures with lyres and lutes, in a moonlight landscape, 28cm w x 12cm h x 17.5cm d
£20-40

712



Two canvas gun slips by Brady of Halesowen, and a Fieldsman gun slip (3)
£30-50

713



A Victorian pique tortoiseshell buckle, floral decorated, 7.5cm x 5.5cm
£100-150

714



CHORLEY'S

Cotswolds Heritage since 1862

Fine Art & Antiques Including The Principal Contents Of Dunkirk Manor, 23rd Jul,

A mid 19th Century doll's house with two triple-pot chimney stacks to the ridged roof, the white painted front elevation with central triangular windowed pediment above a further four windows and single bay window with central front door with arch top surround, the whole hinged to enclose an interior of four rooms central hall with straight staircase and landing, 89cm wide, 46cm deep, 79cm high (unfurnished)

£150-200

715



A Lines Bros white painted doll's house, circa 1920, with two twin-pot chimney stacks to the patinated tiled roof, the front elevation with three panelled windows with balcony to the upper floor and two further windows to each side of the green painted front door having a triangular pediment and pillar supports, the whole hinged to enclose an interior of four rooms, central stair hall with quarter turn staircase and landing, 73cm wide, 36cm deep, 63cm high (unfurnished)

£100-150

716



A pair of wall brackets, the serpentine shelves above cherubs and a scrolling frame, 17.5cm wide, 15.5cm deep, 26.5cm high

£80-120

717



Three carved giltwood ram's masks, 12cm x 14cm and three gilt metal Bacchus mask furniture mounts, 11cm x 7cm

£120-180

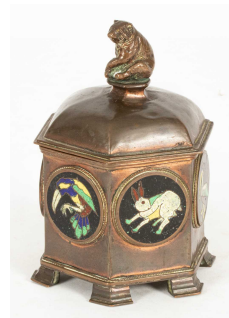
718



A silver gilt Worshipful Company of Cooks' livery badge, marked, 'Peter Sherrard Master Nov. 1961 - 26 October 1938 admitted to the livery and on the court 23rd March 1954', 5.5g, another silver coloured badge marked 'Samuel Parker Smith admitted to the livery 28 January 1879' and two Royal Academy Music badges (4)

£200-250

719



A Harold Stabler Arts & Crafts lidded pot, of hexagonal form with bear finial, circular cloisonné cartouches of animals, 13cm high

£200-300

CHORLEY'S

Cotswolds Heritage since 1862

Fine Art & Antiques Including The Principal Contents Of Dunkirk Manor, 23rd Jul,

720



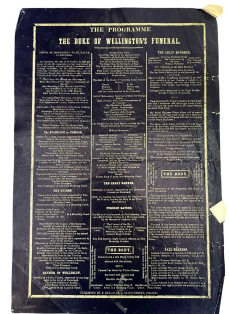
Three pewter owl cruets, two with amber and one with red glass eyes, the largest 10.5cm high (3)
£60-80

721



Royal Doulton 'Golliwog' RdNo. 842482, 14cm high together with a golli rag doll enamel pendant, a brooch and a miniature doll (4)
£50-70

722



Ephemera: The Programme of the Duke of Wellington's Funeral single printed page on indigo paper with the order of proceedings for the Funeral, within a white tracery border, London: Published by F. Reynolds, 1 Savoy Street, Strand [1852]
Provenance: A Cotswolds Country House. By descent from the 3rd Earl of Liverpool, Charles Cecil Cope Jenkinson, (1784-1851)
£80-120

723



A George V 18ct gold and Malacca cane, the gold pommel initialled 'ERD', maker's mark 'MJ', London 1912, retailed by Brigg, London, approximately 93cm long
£150-200

724



An unusual Adam style jardinière on four rams mask capped legs with hoof feet, 27cm diameter x 119cm high
£300-500

725



A muzzle loading fowling piece, Armitage & Walker, barrel 79cm long
£100-150

726



CHORLEY'S

Cotswolds Heritage since 1862

Fine Art & Antiques Including The Principal Contents Of Dunkirk Manor, 23rd Jul,

A rectangular porcelain paperweight with painted armorial of Leigh of West Hall in High Legh, Co. Chester impaling Wright of Osmaston Manor, Co. Derby , 13.5cm x 8cm
Provenance: The arms indicate that this was made for Egerton Leigh (1815-76) of West Hall, High Legh, DL, JP, High Sheriff etc, MP for Mid-Cheshire, who m. 1842 Lydia Rachel, daughter and co-heir of John Smith Wright of Bulcote Lodge, Notts.

£80-120

727



A late 19th Century microscope, signed Millikin & Lawley, 165 Strand, London, contained in a fitted box with a few accessories including six glass slides, the cabinet 19cm wide, 15cm deep, 22.5cm high

£60-80

728



A wooden cased Mahjong set, containing one hundred and forty-four bone and bamboo tiles and various accessories, in five graduated drawers, with an instruction pamphlet 'Directions for Mah Jang, specially compiled by Hanley Bros., Ltd.', the case 26cm wide, 17.5cm deep, 20cm high (handle up)

£50-70

729



A set of early 20th Century jockey scales the offset weighing arm with a sliding brass weight scale and six cast iron weights, on a column support, the base cast with the maker W & T Avery, Birmingham, 164cm high

730



Assorted advertising tin boxes, to include cigarette tins, cocoa tins etc

£60-80

731



A George III mahogany box, with brass carry handles to the sides, on bracket feet, 45.5cm wide, 39cm deep, 53.5cm high

£120-180

732



CHORLEY'S

Cotswolds Heritage since 1862

Fine Art & Antiques Including The Principal Contents Of Dunkirk Manor, 23rd Jul,

A late Georgian mahogany apothecary's chest, the hinged lid revealing a fitted compartment with six glass bottles above a cupboard door enclosing a bottle rack containing three of four bottles and two fitted drawers, carry handles to the sides, 18.5cm wide, 18cm deep, 24cm high
£150-200

733



739



A Carlton Ware vase of baluster shape, sketching bird pattern, numbered to base, 1/2795 3891, 20cm high
£100-150

740

African tribal spears to include two hide bound hunting spears and others, the largest 160cm and 150cm approximately (5)
£100-150

734



African carvings to include three African heads, one with multi-coloured beading to headdress, a warrior, an ebony bowl and two masks
£70-100

735



Assorted World Wide stamp albums, to include a Post Boy stamp album, Victory stamp album, The Illustrated Postage stamp album x 2, two other albums, sheets and loose stamps
£40-60



A Royal Doulton figure of a prowling lion on a rock, HN2641, 46cm long
£150-200

741



A group of English blue and white pottery, mostly Willow pattern, comprising nine platters in various sizes, a mug, ladle, tureen and cover, two circular stands and three teabowls
£20-30

742



CHORLEY'S

Cotswolds Heritage since 1862

Fine Art & Antiques Including The Principal Contents Of Dunkirk Manor, 23rd Jul,

A Royal Doulton part dinner and tea service,
'Rose Elegans' pattern, comprising: eight dinner
plates, eight dessert plates, five two-handled
soup bowls, eight teacups and saucers and five
teaplates T.C.1010
£30-50

743



John Maltby (1936-2020) a circular box and
cover, impressed mark to base, 6.5cm in
diameter
£80-120

744



A Wemyss pottery pig with black sponge marks
and pink to the ears and trotters, marked
Wemyss to base, 9.5cm high x 16cm long
£80-120

745



A Royal Crown Derby coffee set, printed and
painted pattern 5173, in a fitted case, 34.5cm
wide, containing six saucers and five cups
£60-80

746



An Abuja pottery tankard 14.5cm high
£60-80

747



A Royal Crown Derby dinner and coffee service,
Red Aves pattern, comprising: twelve starter,
dinner, dessert and side plates, twelve two-
handled soup bowls and stands, two oval
serving platters and a square footed comport,
twelve coffee cans and saucers, milk jug, cream
jug, sugar bowl and four small fan-shaped
confectionary dishes
£400-600

748



Six late 19th century French faience asparagus-
moulded plates and two similar oyster plates,
24cm wide
£50-70

CHORLEY'S

Cotswolds Heritage since 1862

Fine Art & Antiques Including The Principal Contents Of Dunkirk Manor, 23rd Jul,

749



ARR Ray Finch (1914-2012) for Winchcombe pottery, a press moulded slipware dish in brown and cream, with impressed Winchcombe pottery mark, 23.5cm x 19.5cm
£70-100

750



Three French faience barber's bowls each with floral decoration, one centred by a vignette of buildings, the largest 28cm diameter
£80-120

751



A Bohemian ruby glass decanter, 25cm high, four glasses and a vase, all engraved with animals, trees and foliate c-scrolls, late 19th century (6)
£60-80

752



A Gallé style table lamp, inverse baluster shaped, yellow ground with blue flowers, on a square metal base, 39cm high, another Gallé style vase, white ground with blue flowers, 20cm high and a Gallé style bowl, 6cm high (3)
£100-150

753



A Daum style cameo vase decorated with thistles, 28cm high and another smaller vase, 11cm high
£70-100

754



A Gallé style mushroom lamp, white ground with red flowers, signed, 69cm high
£70-100

755



CHORLEY'S

Cotswolds Heritage since 1862

Fine Art & Antiques Including The Principal Contents Of Dunkirk Manor, 23rd Jul,

A set of five graduating Glassroots studio glass vases, in green, creams and purple, all signed to base with limited edition numbers, the largest 24cm high, the pair of green, 18cm high and the two smallest, 9cm high
£70-100

760



Travel and History: bindings, to include: **Stanley (Arthur Penrhyn)** Sinai and Palestine, London: John Murray, 1868, 8vo, full calf gilt, marbled endpapers, 2 fold-out maps; **Elphinston (James)** and **James-Benignus Boussuet** A View of Universal History, from the Beginning of the World to the Empire of Charlemain, vol 1 only, London: B White et al, 1778, 12mo, full calf; **Eustace (John Chetwode)** A Classical Tour through Italy, vol IV only, third edition, London: J Mawman, 1815, 8vo, full calf gilt, marbled endpapers and page edges, with four further volumes (7)
£100-150

761



Southey (Robert) Works, to include **The Poet's Pilgrimage to Waterloo** London: Longman, Hurst, Rees, Orme and Brown, 1816; **The Expedition of Orsua and the Crimes of Aguirre** London: Longman, Hurst, Rees, Orme and Brown, 1821, **Life of Nelson** 2 volumes, London: Longman, Hurst, Rees, Orme and Brown, 1825; **Roderick, Last of the Goths** Two Volumes, London: Longman, Hurst, Rees, Orme and Brown, 1826; **Joan of Arc** 2 volumes, London: Longman, Hurst, Rees, Orme and Brown, 1817 (8) all with bookplate for 'William Lamb, Hay Carr', 16mo, Half calf and marbled boards
£100-150

762



Decorative bindings: A Holy Bible and Book of Common prayer The Holy Bible, Oxford: The University Press, 1845, 16mo, contemporary clasped leather, all edges gilt, gauffered page edges with hand-painted branch and paper twist scroll with Gothic script 'Scriptures the Earth', label for J. Maclehose, Glasgow; **The Book of Common Prayer** Oxford: The University Press, 1840, 12mo, contemporary clasped leather, all edges gilt, gauffered page edges with hand-painted branch and paper twist scroll with gothic script 'pray and wait' and 'Always pray'; both inscribed 'John Henry Stirling from his Godfather Wm Stirling October 7th 1846' (2)
£120-180

763



Scottish crewel work binding: The Book of Common Prayer, Oxford: The University Press, n.d. late 19th Century, 32mo, Crewel work cover on a linen backed brocade cloth with metal thread scrolling vines issuing flowers, rosehips, a strawberry and a thistle, within a cartouche, edged with a twisted metal thread trim, bookseller label for R. Grant & Son, Edinburgh, Scotland; within later green leather wrapped box enclosing a torn postcard dated 1889 to Mrs Buck, Pipe Hill, Lichfield
£120-180

CHORLEY'S

Cotswolds Heritage since 1862

Fine Art & Antiques Including The Principal Contents Of Dunkirk Manor, 23rd Jul,

764



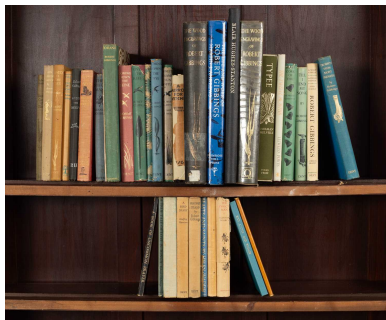
A collection of books on bookbinding and bookselling to include **Harrison (Frederick)** Books about Books, London: John Murray, 1943, 8vo, first edition; **Tidcombe (Marianne)**, Women Bookbinders 1880-1920, London: The British Library, 1996, 8vo. (34)
£100-150

767



Davenport (Cyril) English Embroidered Bookbindings, London: Kegan Paul and Co, 4to, full vellum bound by Jarvis and Foster, Bangor, bookplate for 'John Robert Davies', 52 plates complete
£100-150

765



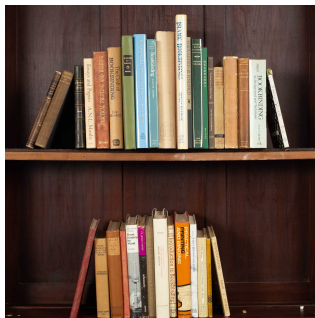
A collection of books on and illustrated by **Robert Gibbings** to include **Andrews (Martin)** The Life and Work of Robert Gibbings, Bicester: Primrose Hill Press, 2003, 4to, original dust jacket; **Kirkus (A. Mary)** Robert Gibbings: A Bibliography, London: J.M. Dent & Sons, limited edition, 1962, 8vo, original dust jacket; **Gibbings (Robert)** Over the Reefs, A True Tale of Love in Tonga, Blue Angels and Whales, London: J.M. Dent & Sons, original dust jacket; Till I End My Song, Coconut Island, Coming Down the Seine, Over the Reefs, Trumpets from Montepasse, Lovely is the Lee, John Graham Convict, Sweet Cork of Thee, Beasts and Saints, London: J.M. Dent. (33)
£80-120

768

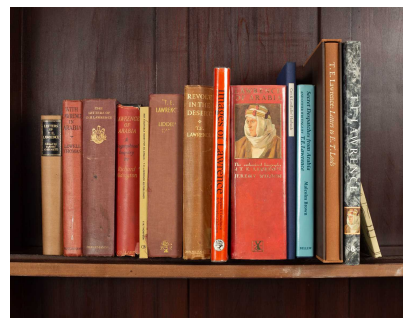


A collection of books on wood engravings, woodcuts, typography and printing to include **Morely-Fletcher (F)** Wood-block Printing, Bath: Isaac Pitman & Sons, 16mo, original dust jacket with original Morely-Fletcher print on Japanese paper on page 95; **Pardoe (F. E.)** John Baskerville of Birmingham, Letter-Founder & Printer, London: Frederick Muller, 1975, 8vo, original dust jacket. (28)
£100-150

766



769



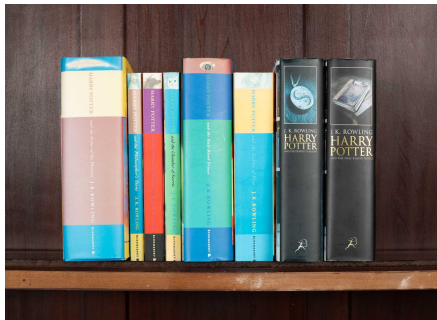
CHORLEY'S

Cotswolds Heritage since 1862

Fine Art & Antiques Including The Principal Contents Of Dunkirk Manor, 23rd Jul,

A selection of books on and by T.E. Lawrence to include Letters to T.E., Leeds, Andoversford: The Whittington Press, 1988, 4to, original slipcase; **Cats and Landladies' Husbands**, Huddersfield: The Fleece Press, 8vo; **Prys-Jones (A.G.) A Memory of T.E. Lawrence**, Buxton: The Hermit Press, [1997], limited edition, 18mo. (14)
£50-70

770



Rowling (J.K) Collection of Harry Potter Novels to include Harry Potter and the Deathly Hallows, Harry Potter and the Half Blood Prince, London: Bloomsbury, varied editions and imprints including some firsts of later imprint, 8vo, original dust jackets. (8)
£50-70

771

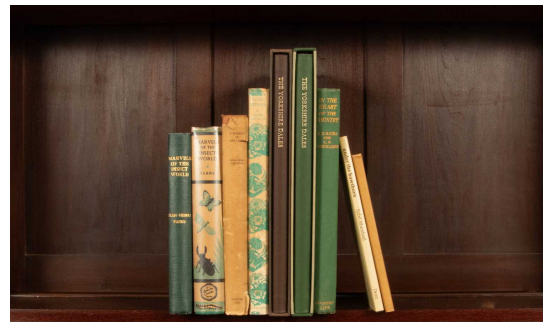


A collection of Private Libraries Association books to include Rota (Anthony) Books in the Blood, Apart from the text, Middlesex: Private Libraries Association, 8vo, original dust jackets; Severin (Mark) Engraved Bookplates, Middlesex: Private Libraries Association, 1972, 8vo, original dust jacket; Goodman (Paul) Beyond Decoration The Illustrations of John Everett Millais, London: Private Libraries Association, 2005, 8vo. (15)
£80-120



A collection of private press volumes to include **Power (Alan) and others**, In Place of Toothpaste Eric Ravilious, Oldham: Incline Press, 2004, 8vo; **Peterson (William)**, The Kelmescott Press, Oxford: Clarendon Press, 1991, 4to; The Homeric Hymn to Aphrodite, the Golden Cockerel Press, 1948, 4to. (10)
£70-100

773



English Countryside interest to include **Leighton (Clare)** Four Hedges A Gardener's Chronicle, London: Victor Gollancz, 1970, 4to, original dust jacket; **Hartley (Marie)** The Yorkshire Dales, West Yorkshire: The Fleece Press, 1989, 4to, original slipcase; **Fabre (Jean-Henri)** Marvels of the Insect World, New York: D. Appleton-Century, 1938, 8vo, original slipcase. (8)
£60-80

774



CHORLEY'S

Cotswolds Heritage since 1862

Fine Art & Antiques Including The Principal Contents Of Dunkirk Manor, 23rd Jul,

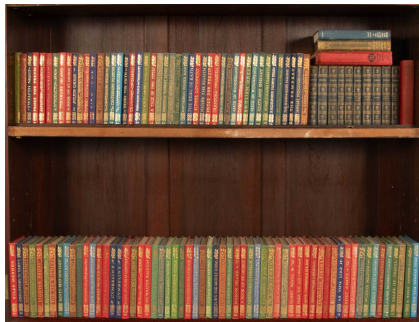
Private Press fiction and non-fiction to include **Lee (Laurie)** Cider with Rosie, London: Hogarth Press, 1956, first edition, 8vo; **Fleming (Ian) and others** The Seven Deadly Sins, Ipswich: William Morrow & Co, 1962, 8vo, original dust jacket; **Nievo (Ippolito)** The Castle of Fratta, London: The Folio Society, 1954, 8vo; **Sitwell (Osbert)** Laughter in the Next Room, the Scarlet Tree, Noble Essences, London: Macmillan and Co, 8vo, original dust jackets; **Glass (Justine)** Witchcraft, The Sixth Sense and us, London, Neville Spearman, 1965, 8vo, original dust jacket (18)
£100-200

775



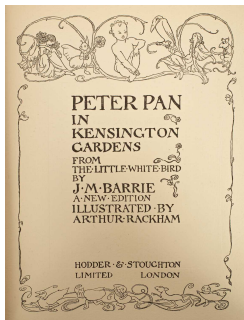
A large collection of books on Yorkshire and the Yorkshire Dales
£80-120

776



Quiller Couch (Sir Arthur T.) ed., A large Collection of 'The King's Treasures of Literature', 16mo, various editions, publisher's cloth bindings (71)
£120-180

777



Barrie (J.M.) Peter Pan in Kensington Gardens from the Little White Bird, illustrated by Arthur Rackham, London: Hodder & Stoughton, n.d., 4to, publisher's green cloth with gilt tooling, tipped in frontispiece, two black and white illustrations, 49 further tipped in plates with titled tissues
£100-150

780



An Italian alabaster bust of Philomena, the bust resting on two carved books the spine of one inscribed Decamerone, signed verso E Ciullini, Firenze 1900, 58cm high
£600-800

781



A scagliola column of veined yellow colour, 111cm high
£400-600

782



A marble bust of the young Caesar, on a socle base, 53cm high
£800-1,200

CHORLEY'S

Cotswolds Heritage since 1862

Fine Art & Antiques Including The Principal Contents Of Dunkirk Manor, 23rd Jul,

783



ARR Rachel Higgins of Warwickshire mouse and bird, both assembled in brass, silver and enamel, the mouse 5cm high and the bird 4cm high (2)
£150-200

784



ARR Wayne Meeten (Contemporary) Rain in Water, a circular sculpture, marked silver to reverse, 8.2cm diameter
£80-120

785



A pair of cold painted bronze bookends modelled as parakeets, mounted on green onyx bases, 11cm wide x 11cm high
£80-120

786



After William Grant Stevenson (1849-1919), a bronze sculpture depicting Robert Burns, on a metal stand, 15.5cm high
£250-350

787



An alabaster bust of a laughing child, on octagonal plinth, 34cm high
£80-120

788



A white painted papier-mâché rhinoceros head trophy sculpture 36cm wide, 44cm deep, 56cm high
£100-150

789



After Emile-André Boisseau (1841-1923), The Pensive Chatelaine, a resin figure in the form of a young woman, on a circular plinth, 56cm high
£100-150

CHORLEY'S

Cotswolds Heritage since 1862

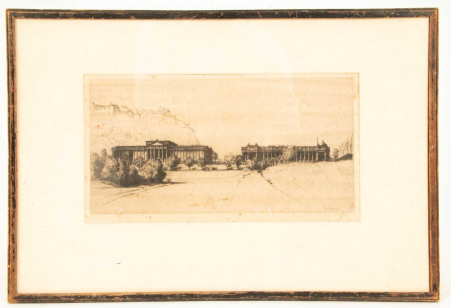
Fine Art & Antiques Including The Principal Contents Of Dunkirk Manor, 23rd Jul,

790



A 20th Century pottery sculpture in the form of a baby's head, on a square wooden plinth, signed indistinctly to base, overall height 25cm
£150-200

795



David Young Cameron (1865-1945)
The Royal Scottish Academy and National Gallery of Scotland
signed in pencil to lower right margin
etching
18cm x 35cm
£40-60

796



ARR Julian Trevelyan (1910-1988)
The Plough
signed in pencil to margin, ed 99/150
etching and aquatint
32cm x 44.5cm
Provenance: Bears Christie's blindstamp to lower right margin and certificate of authenticity to the reverse.
£300-400

797



English School, 19th Century
A Silhouette Depicting Three Members of the Merriman Family of Kinsale
watercolour on cut paper
26cm x 44.5cm
with two watercolour silhouettes and two printed silhouettes of the same period (5)
£150-200

798



Lot Withdrawn - Jack Bush (1909-1977)
Yellow Mark
from the Loop Series
signed in pencil lower right, artist's proof
screenprint in colours
60cm x 76cm

799



Lot Withdrawn - Jack Bush (1909-1977)
Low Sun
signed in pencil lower right, artist's proof
screenprint in colours
55cm x 73cm

CHORLEY'S

Cotswolds Heritage since 1862

Fine Art & Antiques Including The Principal Contents Of Dunkirk Manor, 23rd Jul,

800



William J. Allingham (19th Century)
after William Hamilton RA
The Months
a set of 12 oval stipple engravings
each signed in pencil by the engraver
published by The Museum Galleries
29cm x 24cm
in a green folio case
Footnote: *accompanied by catalogue leaflet with explanatory text.*
£70-100

801



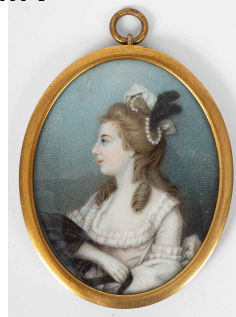
ARR After Sir William Russell Flint (1880-1969)
Flowers in the Cloisters
numbered in pencil to margin 42/850, bearing blindstamp
offset lithograph in colours
49.5cm x 67.5cm
£50-80

802



After Robert Morden, **Bark Shire**, engraved map of Berkshire with hand colouring, 37cm x 42cm
£50-80

803



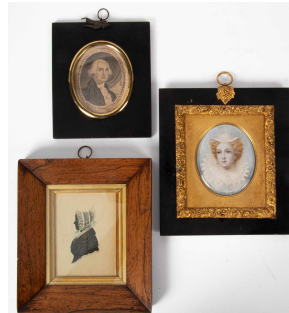
English School, early 19th Century
Portrait Miniature of a Young Woman
half-length, wearing a white dress
watercolour on ivory
7cm x 5.5cm
Ivory registration reference: W4E25WEB
£100-150

804



English School, early 19th Century
Portrait Miniature of a Lady
shoulder-length, wearing a blue dress
watercolour on ivory
4.5cm x 4cm
with a second 19th Century portrait miniature depicting a lady in a black dress and bonnet, 4.8cm x 3.8cm
Ivory registration references: VGSDAWUN and DQG7Y91G
£80-120

805



CHORLEY'S

Cotswolds Heritage since 1862

Fine Art & Antiques Including The Principal Contents Of Dunkirk Manor, 23rd Jul,

English School, circa 1800

Portrait Miniature of Mary Queen of Scots
watercolour on ivory
8.5cm x 7cm
with a second early 19th Century portrait
miniature of a lady, shoulder-length, 7cm x
5.5cm, with a silhouette portrait of a lady and an
etching depicting George Washington (4)
Ivory registration references: QA4AA69L and
K2MH5RJ5

£50-80

806



T. E. Manning

Country House in a Woodland Landscape
with cattle to foreground
signed lower right
watercolour
19cm x 26cm

£50-80

807



ARR Salliann Putman (born 1937)

Still Life with Vase of Flowers
signed lower left
watercolour and gouache
28cm x 22cm

£80-120

808



George Shalders (1826-1873)

Sheep in a Landscape
signed and dated lower left 1872
watercolour and bodycolour
22cm x 37cm

£300-500

809

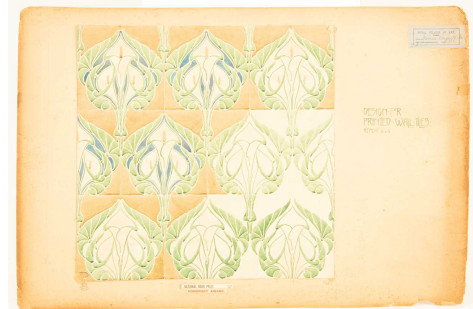


Attributed to Samuel Prout (1783-1852)

At Dieppe
church interior with figures
monogrammed lower right
watercolour heightened with white
22cm x 16cm
with another watercolour drawing attributed to
the same hand (2)

£80-120

810



Augusta Mary Warren (19th/20th Century)

Design for Printed Wall Tiles
submission for the Royal College of Art, 1900/01

signed upper right to RCA label
watercolour on paper mounted to card
main sheet size 45.5cm x 45.5cm
£100-150

CHORLEY'S

Cotswolds Heritage since 1862

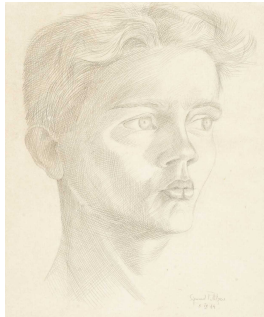
Fine Art & Antiques Including The Principal Contents Of Dunkirk Manor, 23rd Jul,

811



An illuminated manuscript missal leaf, with text in red, blue and black ink on vellum, 16cm x 12cm
£100-150

812



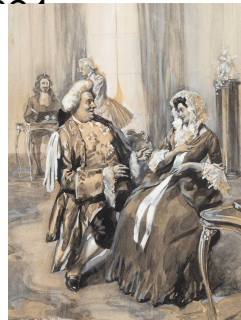
ARR Sigmund Pollitzer (1913-1982)
Head Study of a Young Man
signed and dated lower right 5.IX.44
pencil
26.5cm x 22cm
£40-60

813



ARR Steven Spurrier RA RBI (1898-1961)
Conversing Edwardian Couple
in an interior
signed lower left
watercolour and gouache
39cm x 29.5cm
£40-60

814



ARR Steven Spurrier RA RBI (1898-1961)
Conversing Georgian Couple
in an interior
signed lower left
watercolour and gouache
30cm x 22.5cm
£40-60

815



William Augustus Rixon (1858-1948)
Turkdean Church
signed and dated lower right '20
watercolour
16cm x 34cm
£50-80

816



William Augustus Rixon (1858-1948)
From Staines
signed and dated lower left 85
watercolour
24.5cm x 35cm
£50-80

CHORLEY'S

Cotswolds Heritage since 1862

Fine Art & Antiques Including The Principal Contents Of Dunkirk Manor, 23rd Jul,

817



John Varley (1778-1842)
Riverside Landscape
with a bridge and village in the distance
watercolour
11cm x 13cm
£60-80

820



George Wolfe (1834-1890)
Loading the Boat
signed lower right
watercolour
20cm x 36.5cm
£100-150

818



James Orrock (1829-1913)
Gathering Ling, Yorkshire
signed and dated lower left 1879
watercolour
21cm x 32cm
£40-60

821



Samuel Austin OWS (1796-1834)
Cattle Watering
watercolour
15.5cm x 23cm
Provenance: with Albany Gallery, London.
£60-80

819



Thomas Bush Hardy (1842-1897)
Shoreham
signed and dated lower left 1890
watercolour
9cm x 48cm
£60-80

822



Hubert James Medleycott (1841-1920)
Rouen
signed and dated 1918
watercolour
41cm x 25cm
with a second watercolour by the same hand
depicting Amiens (2)
£80-120

CHORLEY'S

Cotswolds Heritage since 1862

Fine Art & Antiques Including The Principal Contents Of Dunkirk Manor, 23rd Jul,

823



ARR Martin Caulkin (born 1945)

The Wye

signed lower left

watercolour

18cm x 26cm

with two still lifes in gouache by different hands
(3)

£40-60

824



ARR Hervey Cadwallader Adams (1903-1996)

Sky Lines

signed lower right

watercolour

32 x 46cm

with a second watercolour drawing by a different
hand (2)

£30-50

825



A quantity of picture frames, mainly gilt, various
sizes, some with original mounts (11)

£20-30

826



ARR Pierre Mas (born 1933)

Still Life with Flowers

signed lower right

gouache

53cm x 35cm

with a second gouache artwork by the same
hand depicting two owls (2)

£70-100

827



Manner of George Frederic Watts (1817-1904)

Study of a Woman's Head in Profile

bears signature lower left

pencil

20cm x 16cm

£60-80

828



Gertrude Demain Hammond (1862-1952)

Study of a Fashionable Lady

full-length, wearing a hat and carrying a parasol

signed and dated lower right 1911

pencil and grey wash

26cm x 16.5cm

£80-120

CHORLEY'S

Cotswolds Heritage since 1862

Fine Art & Antiques Including The Principal Contents Of Dunkirk Manor, 23rd Jul,

829



Manner of Peter De Wint
Rural Landscape
with stream and church spire in the distance
watercolour
17cm x 37cm
with two further watercolours (3)
£40-60

830



Anthony Vandyke Copley Fielding (1787-1855)
Ben Lomond
signed lower left
watercolour
17.5cm x 25cm
£200-300

831



George Jermyn (19th Century)
Penshurst
signed and dated lower left 1832
watercolour
13.5cm x 21cm
£40-60

832



Charles Somers-Cocks, 3rd Earl Somers (1819-1883)
Eastnor Castle
watercolour
37.5cm x 60.5cm
£100-150

833



David Cox (1753-1859)
Otley Bridge, Yorkshire
August 1843
signed lower left
watercolour
18cm x 26.5cm
£250-350

834



Thomas Bush Hardy (1842-1897)
Hulk at Anchor
signed lower left
watercolour
12cm x 18cm
£70-90

CHORLEY'S

Cotswolds Heritage since 1862

Fine Art & Antiques Including The Principal Contents Of Dunkirk Manor, 23rd Jul,

835



Attributed to Henry Thomas Alken (1785-1851)
Pair of Sketches with Caricatured Figures
signed 'Alken'
pencil with traces of crayon
19cm x 23cm
£100-150

846



ARR Alistair Bennie (contemporary)
Golden Beach, Hebrides
signed lower right
acrylic on board
29cm x 36.5cm
£50-80

836



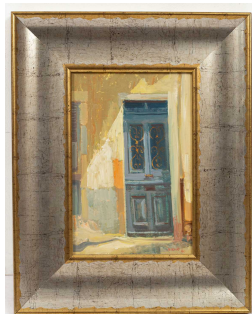
Emily Nicholson (act. 1842-1869)
Putney Bridge
signed lower left
watercolour
24cm x 34cm
with two further watercolour drawings by
different hands (3)
£80-120

847



ARR David Ellwood (20th Century)
Last Flight of the Vulcan
signed lower right
oil on canvas
35cm x 55.5cm
£50-80

845



ARR William Birnie (1929-2006)
Sunlit Door
signed and dated lower right '89
oil on board
21cm x 14cm
Provenance: with The Open Eye Gallery,
Edinburgh
£80-120

848



Vivian Evans (early 20th Century)
Koko
depicting a terrier in a landscape
signed and dated lower right 1907
oil on canvas
27cm x 40cm
£200-300

CHORLEY'S

Cotswolds Heritage since 1862

Fine Art & Antiques Including The Principal Contents Of Dunkirk Manor, 23rd Jul,

849



Continental School, 19th Century
Rural Landscape
with mill to foreground
oil on canvas
33.5cm x 29cm
£150-200

850



Italian School, 19th Century
Portrait of a Monk in Contemplation
wearing glasses, leaning on a pile of books
signed indistinctly lower left
oil on canvas
61cm x 47cm
£300-500

851



British School, early 19th Century
Portrait of Donald Fergusson
shoulder-length, leaning on a cane
oil on canvas
74cm x 60cm
with a framed Fergusson family tree (2)
£100-150

852



ARR Donald Ayres (born 1936)
Fox Hunting Scene
in an extensive landscape
signed lower left
oil on canvas
50cm x 100cm
£80-120

853



Continental School, 20th Century
Dutch-Style Interior Scene
depicting a couple eating oysters
bears signature lower left
oil on board
38cm x 28cm
£80-120

854



Ralph Peacock (1868-1946)
Gotthard Pass, Switzerland
depicting a mountainous landscape
initialled and dated lower right 1892
oil on canvasboard
25.5cm x 35.5cm
£400-600

CHORLEY'S

Cotswolds Heritage since 1862

Fine Art & Antiques Including The Principal Contents Of Dunkirk Manor, 23rd Jul,

855



Ralph Peacock (1868-1946)
Dusk at Gotthard Pass, Switzerland
depicting a mountainous landscape
initialled and dated lower right 1892
oil on canvasboard
25cm x 35.5cm
£400-600

858



ARR Donald Henry Floyd (1892-1965)
Caldicot Castle in the Moonlight with the River
Nodern in Flood
signed and dated lower left 'Donald H Floyd
1927'
oil on canvas
45.5 x 65.5 cm
£300-500

856



Edward Moore (19th Century)
Coastal Seascape
with a ship in the distance
signed and dated lower right '90
oil on canvas
45.5 x 91 cm
£150-250

859



William Augustus Rixon (1858-1948)
Turkdean Landscape
with women raking hay
signed and dated lower right '18
further inscribed to reverse of stretcher
oil on canvas
74cm x 107cm
£150-250

857



George Bates (act. c.1883-1888)
Rural Landscape
with lane to foreground
signed and dated lower right 1880
oil on canvas
48cm x 38cm
£200-300

860



Continental School, 20th Century
Roman Cityscape
with Trajan's Column
inscribed and signed indistinctly
oil on canvas
59cm x 68cm
£100-150

CHORLEY'S

Cotswolds Heritage since 1862

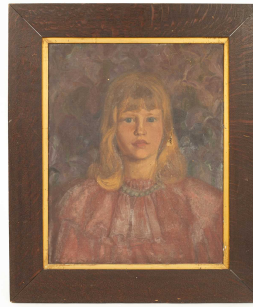
Fine Art & Antiques Including The Principal Contents Of Dunkirk Manor, 23rd Jul,

861



René Sinicki (1910-?)
Les Bouteilles
Le Homard
oil on canvas
both 11cm x 17.5cm
£150-200

864



English School, 20th Century
Portrait of a Girl
oil on canvas
50cm x 40cm
£100-150

862



Dutch School, circa 1800
Rural Landscape
with cottage and figures to foreground
oil on panel
23.5cm x 29.5cm
£100-150

865



Italian School, 18th Century
Head Study of the Virgin
oil on canvas
35cm x 25.5cm
in period carved giltwood cassetta frame
£200-300

863



Italian School, 19th Century
Study of a Monkey with Trainer
oil on panel
28.2cm x 17.8cm
£100-150

866



Hispanic School, 18th Century
Portrait of Saint Teresa of Avila
oval
oil on copper
10.5cm x 9cm
engraved crest to verso
£200-300

CHORLEY'S

Cotswolds Heritage since 1862

Fine Art & Antiques Including The Principal Contents Of Dunkirk Manor, 23rd Jul,

867



Arthur Smith (1814-1882)
Barque Entering Aberdeen
oil on canvas
49cm x 84cm
£300-500

870



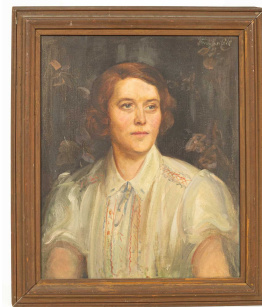
ARR William E. Barrington-Browne (1908-1985)
Bothy Pool, River Gruinard
signed lower right
oil on board
33.5cm x 43cm
£200-300

868



William Shayer (1787-1879)
Coastal Scene
with travellers and packhorse to foreground
signed and dated lower left '56
oil on canvas
40.5cm x 61cm
£400-600

871



Philip Tennyson Cole (circa 1862-1939)
Portrait of a Lady
half-length, wearing a white blouse
signed upper right
oil on canvas
60.5cm x 50.5cm
£100-150

869



ARR William E. Barrington-Browne (1908-1985)
The Rock Pool: Bray Water, River Spey
signed lower left
oil on canvas
29cm x 39cm
Provenance: with The Tryon Gallery, London.
£300-500

872



William Darling McKay (1844-1924)
Across the Sands
oil on board
22cm x 32cm
£100-150