

CHORLEY'S AUCTIONEERS

MODERN ART & DESIGN

READY TOKEN HOUSE: A CONTEMPORARY COTSWOLD INTERIOR

TUESDAY 20th MAY 2025





'The Virtues' Damien Hirst



CHORLEY'S

Cotswolds Heritage since 1862

MODERN ART & DESIGN | READY TOKEN HOUSE: A CONTEMPORARY COTSWOLD INTERIOR

Tuesday 20th May 2025 | Commencing at 10am

VIEWING

Sunday 18th May 2025 | 10am-4pm

Monday 19th May 2025 | 9am - 4pm

01452 344 499

Prinknash Abbey Park | Gloucestershire GL4 8EU

info@chorleys.com

TERMS & CONDITIONS OF SALE

The sale of all lots in this sale is according to Chorley's terms and conditions of sale as published in this catalogue or available on our website chorleys.com

IMAGES & CONDITION REPORTS

Whilst not all lots are illustrated in the printed catalogue, you will be able to view lots during the specified viewing times or explore the fully illustrated online catalogue. Condition reports are available on request and are subject to terms shown on each lot on our website. You should inspect a Lot before bidding to determine and to satisfy yourself as to its condition, size, description and whether it has been repaired or restored, as applicable, and we accept bids on Lots solely on this basis. The absence of a condition report does not imply that a lot is without imperfections.

BIDDING

There are a number of ways to bid at our auctions:

- In person Bidding
- Live Online or commission bidding via chorleys.com (no additional fees)
- Live online or commission bidding via the-saleroom.com (subject to additional platform fees)
- Absentee (Commission) Bidding
- Telephone Bidding on lots with a lower estimate no less than £500 (subject to availability)

COLLECTION

Lots purchased in our sale must be paid for and collected by Friday 30th May, 2025. Lots remaining at the saleroom after this time will incur an administration charge of £10, plus storage fees of £2 per lot per day (all subject to VAT)

BUYER'S PREMIUM

This is charged at the below rates on the hammer price of each lot:

25% (30% incl. VAT) on the first £100,000

15% (18% incl. VAT) on any balance between £100,000.01 and £500,000

12.5% (15% incl. VAT) on any balance between £500,000.01 and £1,000,000

10% (12% incl. VAT) on any balance exceeding £1,000,000

ARTIST'S RESALE RIGHTS ARR

Lots by living artists and the descendants of artists deceased within the last 70 years are entitled to a resale royalty each time their work is bought. The right only applies when the sale price reaches £1,000. The royalty is calculated on to a sliding scale from 4% to 0.25%, with 4% applicable on the hammer price for lots selling between £1,000-£50,000. Where applicable, this mandated royalty will be charged to the purchaser. It is VAT exempt and in addition to the buyer's premium and any other fees. Chorley's will pay royalties directly to the appointed Collecting Society and no ARR is retained by Chorley's.

Royalty will be applied as follows: £1,000 - £50,000 (4%), £50,000-£200,000 (3%), £200,000.01 - £350,000 (1%), £350,000.01 - £500,000 (0.5%), > £500,000 (0.25%). ARR is capped at £12,500

PAYMENT

We accept payment by debit card, credit card or bank transfer (maximum payment by credit card of £1,000 per buyer per auction). We do not accept payment by cheque or cash. We currently do not accept payment by American Express.

CODE OF PRACTICE

Chorley's are members of the Society of Fine Art Auctioneers and Valuers and adhere to the Society's guidelines for conduct and practice.



THE CONTENTS OF READYTOKEN HOUSE



A CONTEMPORARY COTSWOLD INTERIOR



Lot 2

1

A pair of imitation lead planters, of cubic form, 49.5cm wide, 49.5cm deep, 49.5cm high containing imitation trees

£400-600

2

A Continental painted chest of drawers, the rectangular top above a blind-fret carved frieze and three drawers on a stand with square tapering legs, 142.5cm wide, 61cm deep, 99cm high

£400-600



Lot 7

3

A replica antique torso mounted on a plinth, 43cm wide, 30cm depth, 163cm high
£100-150

4

ARR Jose Escofet (born 1930)
 Set of Floral Studies
 signed to margin
 prints in colours
 40cm x 30cm (11)
£100-150

5

A limed oak bedside table the three-quarter galleried top above a slide on turned supports to a base with single drawer, 125cm wide, 41cm depth, 100cm high
£80-120

6

An Empire mahogany centre table, the dished grey marble top on three column supports to a triform base, 87cm diameter x 74cm high
£400-600

7

A set of four Azzure bar stools by Frato, each with upholstered back and seat on black-lacquered square tapering legs with brushed brass stretchers, 47cm wide, 54cm deep, 113cm high
£300-500

8

A set of ten Orr dining chairs by Robert Langford, with button detail to the upholstered backs, 58cm wide, 65cm high, 88cm high
£300-500

9

Two empty large format Champagne bottles, comprising a Methuselah of Dom Perignon 2002, No.259, boxed and a Methuselah of Louis Roederer Cristal 2002, boxed (2)
£80-120

10

A George III oak corner cupboard 74cm wide, 46cm depth, 89cm high
£30-50

11

Naïve School, early 20th Century

Study of a Pigeon

oil on board

30cm x 38cm

with an etching depicting Durham and an oil still life depicting a flower (3)

£30-50

12

B&B Italia, a sectional sofa comprising multiple sections including two configurable armless chairs, a corner chair and ottoman, a chaise end with ottoman and a further coffee table ottoman

£3,000-5,000

13

An upholstered armchair on turned front legs, 68cm wide, 63cm depth, 95cm high

£150-200

Lot 8



14
A Television stand with integral speaker and cupboards
£300-500

15
An upholstered ottoman, with hinged lid covered in a striped fabric
£150-200

16
Martyn Lawrence Bullard for the Rug Company, labelled 21/85884 South Ridge Teal, with a light beige field with a raised lattice of ivory and blue dotted hexagons, 234cm x 156cm
Provenance: *Purchased 2019 from The Rug Company*
£500-700

17
A standard lamp
£100-150

18
A pair of chinoiserie table lamps, of turned column form decorated butterflies and foliage, with red shades, 86cm high including shade
£400-600

19
An Empire style table, the circular marble top with low brass gallery above a drawer on turned tapering legs
£100-150

20
A pair of square marble top tables, on tubular brass legs united by X-stretchers, 46cm square x 54cm high
£300-500

Lot 8





Lot 21

21
A Max Rollitt Sargeant sofa
upholstered in Romo Lorian
Maize, on tapering legs with
castors, 164cm wide, 75cm deep,
130cm high
£1,500-2,000



Lot 22

22
ARR **Edward Seago (1910-1974)**
Lisbon Harbour
signed lower left
watercolour
26.5cm x 38cm
£2,500-3,500



Lot 23

23
ARR **Edward Seago (1910-1974)**
The Plough Team
signed lower left
watercolour
27cm x 38cm
£3,000-5,000



Lot 24

24
ARR **Edward Seago (1910-1974)**
The Ash Tree
signed lower left
watercolour
37cm x 53cm
£3,000-5,000



Lot 25

25
ARR **Edward Seago (1910-1974)**
Gathering Storm, Suffolk Coast
signed lower left
watercolour
27cm x 38cm
£3,000-5,000



Lot 26 (a pair)

26

A pair of Regency style painted console tables, each with canted front corners and on leaf-capped scroll front legs, 158cm wide, 50cm depth, 78cm high
£800-1,200



Lot 32

27

A modern lacquered partners' desk, fitted with three frieze drawers to each side on end supports, 192cm wide, 107cm deep, 76cm high
£700-1,000

28

[Racing and Formula 1] A collection of volumes to include Briggs (Ian) and Starkey (John) *Golden Era: The History of Group C*, two volumes, London, 2005, 4to with original dustcover and slipcase and other volumes on racing and luxury cars; together with Goldberger (John) *100 Superlative Rolex Watches*, Damiani, 2008, folio (qty)
£80-120

29

Taschen coffee table books to include: **Newton (Rose, ed.) Helmut Newton**, Taschen, 2009, large folio, original dustcover; **Blaeu (Joannis) Atlas Maior**, Taschen, 2010, large folio in slipcase; **The Circus: 1870s - 1950s**, Byrne (Oliver) *The First Six Books of the Elements of Euclid*; **Magic 1400s - 1950s**; **75 Years of DC Comics** (6)
£70-90

30

ARR Richard Poumelin (born 1965) *New York Street Scene* signed lower right oil and acrylic on canvas 80.5cm x 80.5cm
£100-150

31

A Regency style mahogany centre table, the crossbanded circular top on a turned column and reeded outswept legs with brass paw caps and castors, 123cm diameter, 78cm high
£100-150

32

A red upholstered armchair, on turned front legs with castors, 81cm wide, 93cm depth, 85cm high
£300-500



Lot 34

33

A Lorfords Kinross sofa, upholstered in Robert Allen Savoy Pewter fabric, 240cm wide, 107cm deep, 79cm high
£800-1,200

34

A large magazine stool, with button unholstered top on turned legs with castors, the top 140cm x 110cm
£500-700

35

A Lorfords Kinross sofa, upholstered in Robert Allen Nesting-Zigzag bluebell fabric, 240cm wide, 107cm deep, 79cm high
£800-1,200

36

The Rug Company, a modern handwoven carpet with a cream ground and a 'gold' geometric trellis design, 364cm x 274cm
£800-1,200



Lot 37

37
ARR Paul Rafferty (born 1965)
 Gondolas
 signed lower left
 oil on canvas
 49.5cm x 75.5cm
£800-1,200

38
Meret Oppenheim for Cassina,
 a Traccia table, 65cm wide, 53cm
 deep, 65cm high
£500-700

39
A Regency ebonised tripod table,
 with canted Chinese export
 lacquered top, possibly adapted,
 47.5cm wide, 38cm deep, 70.5cm
 high
£100-150

40
A copper log bin, of square shape
 with carry handles to the sides,
 51cm wide, 47cm deep, 51cm high
£60-80



Lot 38



Lot 41

41
ARR **Edward Seago (1910-1974)**
Harbour Scene
signed lower left
watercolour
18.5cm x 27cm
£1,500-2,000



Lot 42

42
ARR **Edward Seago (1910-1974)**
The Strand on the Green
signed lower left
watercolour
26cm x 37cm
£2,000-4,000



Lot 43

43
ARR **Edward Seago (1910-1974)**
The Mall, London
signed lower left
watercolour
26.5cm x 37cm
£3,000-5,000



Lot 44

44

ARR **Edward Seago (1910-1974)**

Last Light on the Orwell, Suffolk

signed lower left

oil on board

40cm x 61cm

Footnote: *Literature: Ranson (Ron)*

Edward Seago: The Vintage Years,

David & Charles, 2003, p. 91

£20,000-30,000



Lot 45

45

An upholstered armchair, on turned front legs with castors, 73cm wide, 82cm depth, 91cm high
£300-500

46

A pair of painted commodes, each with rectangular top above a dentil cornice and two long drawers on square tapering legs, 122cm wide, 57.5cm deep, 75.5cm high
£500-800

47

A grey upholstered tub chair on plain tapering front legs, 68cm wide, 55cm depth, 78cm high
£80-120



Lot 46



Lot 53

48
A contemporary chest of drawers fitted with two banks of three drawers, matte lacquer finish, 180cm wide, 56cm deep, 73cm high
£200-300

49
An oak cupboard enclosed by two panelled doors, 130cm wide, 64cm depth, 200cm high
£100-150

50
A pair of marble-top bedside tables, each with a drawer above fluted column supports on a cupboard base with peg feet, 48cm wide, 47cm deep, 86cm high
£300-500

51
An 18th Century style four poster bed the plain cornice on reeded and twist-turned end columns, upholstered headboard, 200cm wide, 210cm depth, 232cm high
£1,000-1,500

52
A late Georgian mahogany linen press the dentil cornice above panel doors and with two short and two long drawers below, on bracket feet, 124cm wide, 59cm depth, 205cm high
£300-500

53
A red upholstered 'Maisons du Monde' armchair, on tapering legs, 71cm wide, 63cm depth, 94cm high
£60-80



Lot 54

54

Mallorca Interest

A Set of Reproduction Posters Advertising Mallorca, offset lithographs in colours, 90cm x 60cm (4)

£100-150

57

A cheval mirror, the painted frame supporting an arched glass, 49cm wide x 162cm high and an Oka wall mirror with mirrored frame, 55cm x 45cm (2)

£50-100

55

A painted pine chest of four long drawers on bun feet, 98cm wide, 47cm deep, 91cm high

£100-150

58

ARR **Eric Arnold Roberts Ennion (1900-1981)**

Study of a Bird and a Butterfly in Foliage

signed in pencil to margin

print in colours

with another print by the same artist and two further decorative pictures (4)

£60-80

56

A painted cupboard enclosed by plain panel doors on low bracket feet, 151cm wide, 61cm depth, 190cm high

£70-100



Lot 59

59
 ARR **Edward Seago (1910-1974)**
 Southern Spanish Landscape
 signed lower left
 oil on canvas
 66cm x 91.5cm
 Provenance: *bears Colnaghi & Co*
label to the reverse.
£10,000-15,000



Lot 60

60
ARR **Edward Seago (1910-1974)**
The Terrace, Tuileries Gardens
signed lower left
watercolour
27cm x 39cm
£3,000-5,000



Lot 61

61

ARR Edward Seago (1910-1974)

Study of HRH Queen Elizabeth II
on horseback, at her birthday parade in 1953
oil on board
30cm x 30cm

Provenance: with Richard Green Gallery; Private Collection UK.

Footnote: Literature: Russell (James) Edward Seago, Lund Humphries, 2014, p. 91

Offered with two preliminary pencil studies by the same artist, for the final
portrait for the Coldstream Guards, from one of Seago's sketchbooks.

£15,000-20,000



Lot 62

62
ARR **Edward Seago (1910-1974)**
Barges at Rest
oil on board
40.5cm x 50.5cm
£12,000-18,000



Lot 63

63

A painted chest of drawers, fitted with two banks of three drawers, shaped front, 198cm wide, 50cm depth, 86cm high
£200-300

64

A 19th Century Continental mahogany commode, fitted with two drawers, a band of reeded decoration above and below, on square tapering legs, 95cm wide, 47cm deep, 73cm high
£150-200



65
A George III bedside commode the three-quarter galleried top above cupboard doors and a commode drawer, 71cm wide, 46cm depth, 94cm high
£80-120

66
A cylindrical metallic plinth, 41cm diameter, 37cm high
£40-60

67
A modern grey upholstered sofa 126cm wide, 83cm depth, 81cm high
£80-120

68
A quantity of decorative cushions, various
£100-150

69
A French provincial oak dresser base, fitted with two drawers above arch panel doors, 50cm wide, 43cm depth, 64cm high
£30-50

70
A pair of painted bedside chests, each with shaped front and fitted with two drawers, 55cm wide, 35cm deep, 57cm high
£70-100

71
ARR Paul Oz (Contemporary) Scooby-Doo signed lower right oil on board 97cm x 90cm
£300-500

72
After Watanabe Seitei (1851-1918) Studies of a Bird and a Butterfly woodcut in colours 24cm x 32cm (2)
£60-80

73
Continental School, 20th Century Expressionist Landscape with Trees signed indistinctly lower right oil on canvas 46.5cm x 55cm
£60-80

74
Bath (Early 20th Century) Still Life with Cauliflower oil on canvas, 44 x 53cm
£80-120



Lot 75

75
ARR **Paul Rafferty (born 1965)**
Mediterranean Coastal Scene
signed lower left
oil on canvas
120cm x 130cm
£6,000-8,000



Lot 75

A COLLECTION OF FURNITURE BY JEREMY GREEN



On leaving school Jeremy Green (b.1951) briefly considered a career as a medic but soon discovered that this was not for him. He went on to gain an Honours Degree in Archaeology, Ancient History and Egyptology from the university of Liverpool. While in Liverpool he spent a lot of time in the library where he read about and fell in love with the Arts & Crafts movement. This led him to train with Oliver Morel (1916-2003) at Moreton in Marsh, not far from his parents house in Chipping Campden. His parents allowed him the use of part of their house to pursue his vocation and he soon became a restorer, woodworker and cabinet maker. Much of his work was produced as private commissions but he also sold through Gallery at the Guild in Chipping Campden and via exhibitions he arranged in the local area. He became a well-known figure in Chipping Campden and was the owner and editor of the Campden Bulletin for over 30 years.



Lot 90

90
ARR **Jeremy Green (born 1951)** a set
of eight hooped back dining chairs
with back bar carved circular motifs
above an upholstered drop-in seat,
inlaid roundel to top of legs and on
shaped feet (six singles + two
armchairs)
£150-200



Lot 91



Lot 91 (top detail)

91
ARR **Jeremy Green (born 1951)** a
tripod table, the circular top with
raised inlaid border on column
support with splayed legs, 63cm
diameter, 76cm high
£600-800



Lot 92

92
ARR **Jeremy Green (born 1951)** a
mahogany drop-leaf table the two-
flap top on tapering legs with hoof
feet, 176cm when extended, 122cm
deep, 75cm high
£150-200



Lot 93

93
ARR Jeremy Green (born 1951) a green painted circular table the column support on tripod base, 66cm diameter, 70cm high
£200-300

94
ARR Jeremy Green (born 1951) a yew wood heptagonal wall mirror, with raised decoration to corners, 81cm x 59cm
£200-300

95
ARR Jeremy Green (born 1951) a bowfronted hanging corner cupboard, the doors with raised decorative pattern around the handles, the interior fitted shelves, 58cm wide, 41cm deep, 98.5cm high
£200-300

96
ARR Jeremy Green (born 1951) an oak bowfronted hanging corner cupboard, the doors with raised decorative pattern around the handles, the interior fitted shelves, 38cm wide, 41cm deep, 98cm high
£150-200

97
ARR Jeremy Green (born 1951) a walnut bowfronted hanging corner cupboard, the doors with raised decorative pattern around the handles, the interior fitted shelves, 38cm wide, 41cm deep, 98cm high
£200-300



Lot 95



Lot 96



Lot 97



98
ARR **Jeremy Green (born 1951)** an
Arts & Crafts style drinks cabinet,
the two cupboard doors above a
single drawer base, on shaped legs
united by a stretcher, 73cm wide,
54.5cm deep, 135.5cm high
£200-300

Lot 98



99
ARR **Jeremy Green (born 1951)** a
walnut drop-leaf table, the oval
two-flap top on tapering legs with
hoof feet, 177cm when extended,
122cm deep, 76cm high
£200-300

Lot 99

100
 ARR **Jeremy Green (born 1951)** an
 Arts & Crafts style small West Indian
 mahogany cabinet, four raised
 panels to top above two panelled
 pear wood doors, all inlaid with
 white sycamore and American
 walnut borders, enclosing interior
 fitted pigeon holes, on legs united
 by stretchers, 45.5cm wide, 27cm
 deep, 98.5cm high
£800-1,200



Lot 100



Lot 101

101
 ARR **Jeremy Green (born 1951)** an
 Arts & Crafts style stool with
 upholstered drop-in seat, the legs
 united by a stretcher, 54cm wide,
 39.5cm deep, 33cm high
£80-120

102
 ARR **Jeremy Green (born 1951)** an
 Arts & Crafts style bedside table,
 with single drawer above a
 cupboard with inlaid decoration to
 top and sunken panel to door,
 31.5cm wide, 29cm deep, 61cm high
 and another similar, with raised
 panel to cupboard door, 31cm
 square x 60cm high
£600-800



Lot 102



Lot 103

103
 ARR **Jeremy Green (born 1951)** a
 pair of Arts & Crafts style bedside
 tables fitted a single drawer above
 open shelf, 46.5cm wide, 40.5cm
 deep, 60cm high
£400-600

104
 ARR **Jeremy Green (born 1951)** a pair of Arts & Crafts style bedside tables fitted a single drawer above open shelf, 47cm wide, 40.5cm deep, 60cm high
£400-600



Lot 104



Lot 105

105
 ARR **Jeremy Green (born 1951)** a pair of tray-top side tables, the lift out trays with pierced carrying handles, 49cm x 43cm, fitted on a base united by curved shaped stretchers, 51.5cm wide, 46cm deep, 40.5cm high
£600-800



Lot 106

106
 ARR **Jeremy Green (born 1951)** a box top stool with upholstered seat to hinged top and the cushion with raised inlay border, 86cm wide, 54cm deep, 46cm high
£400-600



Lot 107

107
ARR **Jeremy Green (born 1951)** an
Arts and Crafts style oak waterfall
bookcase, fitted with two rows of
four open shelves, 223cm wide x
116.5cm high
£600-800



Lot 111

108
ARR **Jeremy Green (born 1951)** a book trough, with inlaid vertical line decoration, 37cm wide and another similar, 43.5cm wide (2)
£100-200

109
ARR **Jeremy Green (born 1951)** a heptagonal wall mirror, 59.5cm wide x 60cm high
£80-120

110
ARR **Jeremy Green (born 1951)** an Arts & Crafts style wooden tray, 70cm wide (including handles) x 41cm deep
£40-60

111
ARR **Jeremy Green (born 1951)** a rectangular coffee table, the top with legs united by curved and lattice stretcher, 121cm wide, 60cm wide, 45.5cm high
£300-500

112
Attributed to Jeremy Green: A turned wood table lamp on circular base, with shade, 33cm high, and a smaller wood turned lamp, 13cm high (2)
£30-40

113
ARR **Jeremy Green (born 1951)** a book trough, with inlaid vertical line decoration, 43.5cm wide
£80-120

114
ARR **Jeremy Green (born 1951)** a heptagonal wall mirror, 59.5cm wide x 60cm high
£60-80

115
ARR **Jeremy Green (born 1951)** an Arts & Crafts style wooden tray, 70cm wide (including handles) x 41cm deep
£40-60



FURNITURE & LIGHTING



Lot 118

116
W Lethaby and Richard Norman Shaw for Morris & Co., a 'Hampton' mahogany nursing chair with a cupids bow top rail, solid splat between turned uprights, the rush seat on turned legs with pad feet, 44cm wide, 82cm high
£70-100

117
ARR Mary Syme Boyd (1910-1997) a wooden carved fire screen depicting a deer and palm trees, 81cm high, 61cm wide
£300-400

118
A Robert 'Mouseman' Thompson oak coffee table, on octagonal baluster legs joined by stretchers, 82.5cm x 36cm
£300-400

119
Two Aesthetic Movement occasional tables in the manner of Edward William Godwin, late 19th Century, 40cm wide, 40cm deep, 70cm high and 46cm wide, 46cm deep, 66cm high (2)
£200-300

120
A Heal's circular oak table on plain legs, with Heal & Son Ltd. label and stamped 214 61, 67.5cm diameter
£150-200

121
Two elm stools with curved seats on end supports united by stretchers, labelled for R B Richards & Sons, Shrewsbury, each 47cm wide, 24cm deep, 37cm high
£150-200

122
WAS Benson (1854-1924) an Arts & Crafts adjustable brass standard lamp, circa 1900, 180cm high with frame for shade, 61cm diameter, 21.5cm high, stamped WAS Benson
£80-120

123
An Aesthetic Movement marquetry writing table the floral marquetry inlaid top with rosewood mouldings, above a frieze with two drawers, on turned and square section tapering legs with arched inlaid panel sides, 118cm wide, 57cm deep, 74cm high
£300-500



Lot 121



Lot 124



Lot 124 (closed)

124

Ernest Gimson (1864-1919) A writing cabinet on stand

circa 1910, walnut veneer on Cuban mahogany, the quarter veneered drop front, sides and top inlaid herringbone banding and carnation motifs, the interior fitted an arrangement of sixteen drawers with crescent shaped handles around a central recess with pigeonholes, the stand with pull-out supports with drop handles and central drawer with octagonal ring handles, 121cm high, 81cm wide, 43cm deep

Provenance: *Bonham's, 10th June 2009, Lot 17*

Footnote: *Exterior handles possibly by Alfred Bucknell, interior handles by John Paul Cooper*

Literature: see Mary Greensted 'Gimson and the Barnsleys', p.125 fig.95 and Annette Caruthers and Mary Greensted *Good Citizen's Furniture*, p. 20 fig. 16 for very similar cabinets designed by Gimson

£7,000-9,000



Lot 127

125
A contemporary industrial style concrete coffee table, 110cm wide, 60cm deep, 30.5cm high
£100-200

126
In the manner of Piero Fornasetti (1913-1988) an umbrella/stick stand, decorated with scene of London, with label to the base, 53.5cm high
£80-120

127
Gastone Rinaldi for Rima, a set of six chrome steel cantilever dining chairs, mid-century, with velvet padded cushions, frame stamped Rima Padova Italy, 51cm wide, 77cm high
£400-600

128
A late 19th Century black painted and brass mounted bed frame, the foot board cast with a central floral design, on ceramic castors, 137cm wide, 135 high, the mattress 125cm wide
£150-250

129
An Art Deco style Indian rosewood coffee table circa 1930, the circular top above a planked cross section support and downswept legs, bearing two labels 'American Arcot Mission, Industrial Institute, Katpadi, N. A. Dist.', 67cm diameter, 41cm high
£70-90

130
A vintage cream painted Anglepoise desk lamp, model 1227, on square stepped base, the front fork marked Anglepoise Pat In UK And Abroad, the base 15cm square
£30-40

131
De Sede, a contemporary swivel office chair upholstered in tan leather with shaped arms and chrome base, bearing maker's label, 112cm high x 67cm wide x 55cm deep
£100-150



Lot 131



Lot 134

132

A Contemporary white lacquered low cabinet with four cabinet door with push to open doors, each section fitted for shelves with two shelves present, on a bronzed metal base, 208cm wide, 47cm deep, 70cm high

Footnote: *Reputedly by Davidson of London*

£200-300

133

Davidson London, a large Art Deco style Amara veneered dining table, the rectangular top with ebonised banding on two U-shaped pedestals with bevelled bases, 330cm wide, 130cm deep, 77cm high

£300-500

134

A reclaimed wood writing table, 75cm high, 77cm deep, 182.5cm wide

£100-200

135

A circular glass topped table on ebonised tapered square column base, 75cm high x 135cm diameter

£80-120

136

A Fender amplifier, model no. Rumble 500 Type PR2467, 48cm wide, 36cm deep, 60cm high and two upholstered stools on metal supports, 40cm diameter, 58cm high

£80-120

137

A Super Archimoon Flos floor lamp designed by Phillippe Starck, oversized aluminium anglepoise style lamp on weighted base, 214cm x 242cm (extended 305cm x 330cm)

£100-150

138

Ten klismos style dining chairs with curved back, upholstered in acid green faux leather, 96cm high, seat 47cm high

£400-600



Lot 138



Lot 141

139
A pair of vintage style bar/ counter stools with shaped oak seats raised on black metal supports, 74cm high
£40-60

140
CITES An Edwardian marquetry dressing stool with ivory inlay, the upholstered scroll seat on downswept stretcher, 51cm wide, 39cm deep, 48cm high
£80-120

141
A mid Century circular marble-topped table on chrome steel base of six tubular legs united by stretchers, 150cm diameter, 74cm high
£200-300

142
Davidson London, an Art Deco style Amara veneered side cabinet, two doors enclosing adjustable shelves on recessed pedestal base, 120cm wide x 50cm deep x 85cm high
£200-300

143
A nine-light candelabrum with silver chain and crystal drop swags on black steel base, 105cm high
£60-80

144
Best & Lloyd a polished steel adjustable reading light, marked Best & Lloyd to base, 116cm high
£80-120

145
A four-light chrome and black floor lamp, with black/rose shade, 181.5cm high
£60-80



Lot 146

146
Two Bottega Piston blue leather upholstered bar stools, designed by Frag, adjustable height on stainless steel bases, labelled, 79cm high, the seat 42cm wide, 43cm deep
£200-300

147
Industville, a black and rose gold dome pendant light, 60cm diameter
£40-60

148
A teak side table, circular top above a solid column base and plinth, 70cm diameter x 61cm high
£60-80

149
Two log baskets made from recycled rubber tyres, approximately 97cm high
£30-40

150
Davidson London, a pair of Art Deco style Amara veneered circular side tables with conical tapered plinths, Davidson London label to underside, 70cm diameter x 74cm high
£300-500



Lot 149



Lot 153

151
Industville, a collection of pendant light fittings comprising two black and rose gold dome pendant lights, 30.5cm diameter, another with pewter colour shade, 21cm diameter and three with hanging balloon cage, glass funnel and cone shade, 90cm drop
£100-200

152
A rectangular dining table the glass top with bevelled edge on two V-shaped bases of green tinted stepped glass panels, 186cm wide, the bases 96cm deep, 74cm high
£100-200

153
A Flexform chair upholstered in woven linen on anodised aluminium end supports, 121cm wide, 100cm deep, 56.5cm high
£200-300

154
Davidson London, a large Art Deco style Amara veneered sideboard, the central bank of five drawers flanked by two cupboards enclosing two adjustable drawers with nickel plated handles, label to top drawer, 270cm wide, 50cm deep, 85.5cm high
£200-300

155
A Laura Ashley Henshaw chest of three drawers with ebonised finish, 79.5cm wide, 44cm deep, 86.5cm high
£60-80

156
Two Niels Otto Möller dining chairs, model 75, with teak frames and woven seats, both stamped 'Made in Denmark', each 74.5 high, 50.5cm wide, the seat height 44cm
£300-400

157
Philippe Starck (born 1949) for Kartell, a set of four Victoria dining chairs; together with two Ghost style armchairs (6)
£400-600

158
Two India Jane table lamps, one of fluted white glazed ceramic with brushed brass fittings, 42cm high; the other of black glazed ceramic with chrome fittings and on an acrylic base, 50cm high (without shades)
£120-180

A large, vibrant red sculpture of human legs in a dynamic, contorted pose, rendered with fine, parallel lines to create a textured, almost fabric-like appearance. The legs are positioned diagonally across the frame, with one leg extended upwards and the other curving downwards. The background is a solid, light gray.

MODERN ART & PRINTS



Lot 172

169

Richard Demarco (1930)

The Dean Village from Belford Road

signed and dated 1967
watercolour

37cm x 27cm, and

Marjorie O Gaylord (20th Century)

Tenement Houses, Edinburgh

pencil
28.5cm x 19cm (2)

£100-150

170

ARR Samuel Webley (1877-1956)

Cyclamen

monogrammed and dated to the reverse 1931

oil on panel
66cm x 47cm

£300-500

171

ARR Samuel Webley (1877-1956)

Riverside Landscape with Young Boy Fishing

signed lower left
pen and ink with charcoal
31.5cm x 41cm

£200-300

172

ARR Samuel Webley (1877-1956)

Replica of 'The End of the Garden'

oil on panel

43.5cm x 61cm
Provenance: *bears label to the reverse*

£300-500

173

ARR Anne Gordon (born 1941)

Autumn Landscape

signed lower right

oil on board
22cm x 20cm

£200-300

174

ARR Ronald Maddox (1930-2018)

Landscape with Poles

signed lower right
watercolour

24cm x 36cm

£100-150

175

ARR Ronald Maddox (1930-2018)

La Tourraque, Provence

signed lower right
watercolour

46.5cm x 39cm

£100-150

176

ARR Bryan Hanlon (born 1956)

Studies of Thomson's Gazelle

signed and dated '95
watercolour

22cm x 31cm

and **Hanlon (Bryan) Birds & Beasts**

- Africa, Shrewsbury: Swan Hill Press, 1997, signed by the author (2)

Provenance: *with The Tryon and Swan Gallery, London.*

Footnote: *Literature: Hanlon (Bryan) Birds & Beasts - Africa, Shrewsbury: Swan Hill Press, 1997, pp. 56-7.*

£200-300

177

ARR Sir Stanley Spencer CBE RA (1891-1959)

Head Study of a Young Woman

signed lower right and bearing Christie's Studio Sale stamp

pencil

37cm x 27cm

Provenance: *Christie's King Street, Stanley Spencer Studio Sale, November 1998; Private Collection, UK.*

Footnote: *The sketch bears the rubber stamp that was created by Christie's for the artist's studio sale.*

£300-500



Lot 182

178
ARR **William Black (20th Century)**
Dockyard Abstraction
signed and dated lower right '67
gouache
48.5cm x 33cm
£100-150

179
Italian School, 20th Century
Mediterranean Coastal Scene
bears signature lower right
oil on board
28cm x 38cm
£80-120

180
ARR **John Yardley (born 1933)**
Canoe Scene
signed lower left
oil on board
28cm x 33cm
£200-300

181
ARR **Norman Weaver (1913-1989)**
Hippo (2)
bears inscription to reverse
pen and ink
17cm x 23cm
£80-120

182
ARR **Gary Anderson (born 1960)**
One-Swan-a-Swimming
signed and dated lower right '03
watercolour and crayon
16cm x 16cm
£200-300

183
ARR **Sioban O'Hehir (born 1966)**
Abstract Landscape
signed lower right
oil on board
18cm x 17cm
with a second oil painting by the
same hand, 17.5cm x 12.5cm (2)
£80-120

184
ARR **Helen Fay (born 1968)**
Mrs Blackbird
inscribed with signature to the
reverse
gouache and ink
10cm x 15cm
£40-60

185
ARR **Fred Yates (1922-2008)**
Snow Park
oil on canvas
26.5cm x 34cm
Provenance: with *The Great
Atlantic, Cornwall*; Private
Collection, UK.
£600-800

186
ARR **Mark Czalet (born 1964)**
Playtime V
signed and dated lower right '92
pastel
44.5cm x 30cm
£50-80

187
ARR **Rachel Kantaris (born 1967)**
Curlicue (2005)
initialled lower right
acrylic on board
20cm x 25cm
£100-150



Lot 188

188
ARR **Michael Canney (1923-1999)**
Abstract with Sphere and Purple Triangle (1980)
initialled in pencil to lower left margin
mixed media with collage
11cm x 10cm
£800-1,000



Lot 192

189
ARR **Rudolph Helmut Sauter (1895-1977)**
Lakeside Landscape
signed and dated lower right 1948
watercolour
37cm x 51cm
£150-250

190
ARR **Philip Erskine (1933-2013)**
Wild Flowers in the Weylands
Reserve
signed and dated lower right 2000
oil on board
70cm x 70cm
£250-350

191
ARR **Jacob Epstein (1880-1959)**
Odalisque (1928)
signed lower left
pencil
43cm x 55cm
Footnote: *The Model for this drawing – one of many in a series that were produced in a burst of creativity in the summer of 1928 – is most likely Amina Peerbhoy, a young Kashmiri woman who was one of Epstein's favourite models to whom he gave the nickname Sunita.*
£800-1,200

192
ARR **Bryan Kneale (born 1930)**
Anteater
signed and dated in pencil lower left 1990
conte on paper
43cm x 53cm
£600-800

193
ARR **Giovanni Macciotta (1927-1993)**
Another Garden of Earthly Delights
signed and dated lower right 51
oil on canvas
24.5cm x 60cm
£100-150

194
ARR **Donald H Edwards (20th Century)**
Painswick Street Scene
signed lower right
watercolour
31.5cm x 39cm
£60-80



Lot 195

195

ARR John Myatt (born 1945)

A Corner of the Garden at Montgeron
after Claude Monet

signed and dated to the reverse 'John Myatt Genuine Fakes 2007'

oil on canvas

66cm x 71cm

Provenance: *purchased directly from the artist by the current owner.*

£1,000-1,500



Lot 196 (a pair)

196
ARR **Juan Soler (born 1951)**
Pair of Continental Street Scenes
depicting elegant figures
signed lower left
oil on canvas
27cm x 22cm (2)
£400-600

197
ARR **Fred Yates (1922-2008)**
Going to Church, Tywardreath, Cornwall
signed lower right
oil on board
30.5cm x 41.5cm
Provenance: *Chorley's*, 22nd November 2016; *Private Collection, UK.*
£1,000-1,500



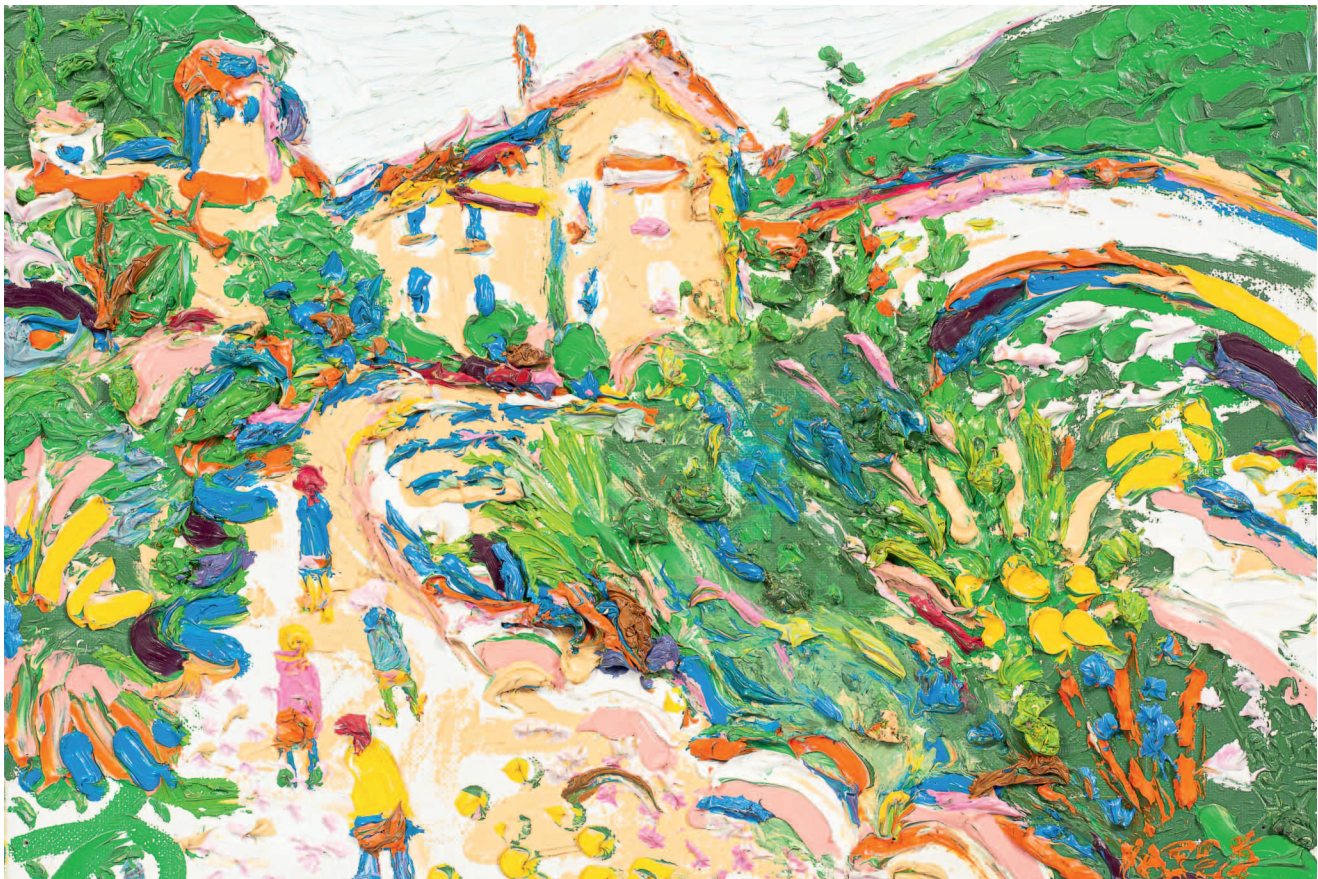
Lot 197

198
 ARR **Fred Yates (1922-2008)**
 Portrait of a Lady in a Purple Hat
 signed lower left
 oil on canvas
 61cm x 45cm
 Provenance: *Peter Wilson, 14th
 September 2017; Private Collection,
 UK.*
£1,000-1,500



Lot 198

199
 ARR **Fred Yates (1922-2008)**
 A Lovely 'Thick' Nyons
 signed lower right
 oil on canvas
 24cm x 35cm
 Provenance: *Private Collection, UK.*
£1,000-1,500



Lot 199

200
 ARR **Fred Yates (1922-2008)**
 Street Scene with Figures
 signed lower right
 oil on canvas
 40cm x 40cm
 Footnote: *Ewbank's 13th*
September 2018; Private Collection,
UK. The painting also bears
Leighton Fine Art and Atelier Fred
Yates stamps to the reverse of the
stretcher.
£1,000-1,500



Lot 200

201
 ARR **Fred Yates (1922-2008)**
 Street Scene with Lady Wearing a
 Hat
 signed lower left
 oil on canvas
 33cm x 41cm
 Provenance: *bears Atelier Fred*
Yates stamp to reverse of stretcher.
£1,000-1,500



Lot 201

202
 ARR **Fred Yates (1922-2008)**
 West Country Village Scene with
 Cottage
 signed lower right
 oil on board
 35cm x 47cm
 Provenance: W. H. Lane & Son, 26th
 June 2018; Private Collection, UK.
£1,000-1,500



Lot 202

203
 ARR **Fred Yates (1922-2008)**
 Coal Shop, Union Street, Stroud
 signed lower right
 oil on board
 45.5cm x 47.5cm
 with an oil landscape sketch by the
 same hand to reverse of board
 Provenance: First purchased at the
 Guiting Festival of Music and Art,
 July 1977 (according to a label to
 the reverse); Chorley's, 24th May
 2016; Private Collection, UK.
£2,000-3,000



Lot 203



Lot 204

204

ARR **Fred Yates (1922-2008)**

In the Factory

signed lower right

oil on board

47cm x 71cm

Provenance: *Christie's 24th*

November 2005; W. H. Lane & Son;

Private Collection, UK.

£1,000-1,500

205

ARR **John Myatt (born 1945)**

The Artist's Garden at Vetheuil

after Claude Monet

signed and dated to the reverse

'John Myatt Genuine Fakes 2008'

oil on canvas

101.5cm x 76cm

Provenance: *purchased direct from*
the artist by the current owner.

£1,000-1,500



Lot 205

206

ARR **John Strevens (1902-1990)**

Portrait of a Lady in a Red Scarf

signed and dated lower left '50

oil on canvas

61cm x 51cm

£200-300



Lot 207

207
 ARR **Saied Dai (born 1958)**
 A Small Eternity (2009)
 monogrammed lower right
 inscribed and dated to the reverse
 oil on linen panel
 51cm x 45cm
£1,500-2,000

208
 ARR **Saied Dai (born 1958)**
 Nocturne (2009)
 monogrammed lower left
 further inscribed and dated to the
 reverse
 oil on linen panel
 45cm x 60cm
£1,500-2,000

209
 ARR **Richard Pikesley (born 1951)**
 End of the Day, Lyme Regis
 signed lower right
 oil on board
 20cm x 30cm
£200-300



Lot 208

210
 ARR **Richard Pikesley (born 1951)**
 Boat Road and Dog, Lyme Regis
 signed lower right
 oil on board
 20cm x 30cm
£200-300

211
 ARR **Richard Pikesley (born 1951)**
 Charmouth Beach, Falling Tide
 signed lower right
 oil on board
 12.5cm x 30cm
£200-300

212
 ARR **Richard Pikesley (born 1951)**
 Marciana, Tuscany, Sky, Sea and Hills
 signed lower right
 oil on canvas board
 27.5cm x 30cm
£200-300

213
 ARR **Richard Pikesley (born 1951)**
 Smoke and Light, Charmouth,
 Dorset
 signed lower right
 oil on board
 19.5cm x 29cm
£200-300



Lot 214

214
 ARR **Saied Dai (born 1958)**
 After Dark (2011)
 monogrammed lower right
 further inscribed to the reverse
 oil on linen
 61cm x 46cm
£1,500-2,000

215
 ARR **Allan Laycock (1928-2020)**
 Swift's Hill, Elcombe
 signed and dated lower left July '98
 acrylic watercolour on board
 17.5cm x 20.5cm
£60-80

216
 ARR **Allan Laycock (1928-2020)**
 Charlton Abbots, Distant Malverns
 signed and dated lower right July '98
 acrylic watercolour on board
 27cm x 38cm
£60-80

217
 ARR **Allan Laycock (1928-2020)**
 Slad from Swift's Hill
 signed lower left
 acrylic watercolour on board
 27cm x 38cm
£60-80

218
 ARR **Allan Laycock (1928-2020)**
 Painswick from Juniper Hill
 signed and dated lower left March '89
 watercolour acrylic on board
 40cm x 55.5cm
£60-80

219
 ARR **Allan Laycock (1928-2020)**
 Mayhill from Newnham on Severn
 signed and dated lower right '96
 acrylic watercolour on board
 27cm x 29cm
£60-80

220
 ARR **Allan Laycock (1928-2020)**
 Painswick House from Edge
 signed and dated lower left Jan '83
 acrylic watercolour on board
 35.5cm x 45cm
£60-80

221
 ARR **Allan Laycock (1928-2020)**
 Byroad near Woodmancote and Winstone
 acrylic watercolour on board
 40cm x 51cm
£60-80

222
 ARR **Allan Laycock (1928-2020)**
 Barns at Compton Cassey,
 Cotswolds
 acrylic watercolour
 39.5cm x 54.5cm
£60-80



Lot 223

223
ARR **Sir Terry Frost RA (1915-2003)**
Sun Over the Sea
signed to the reverse
crayon, acrylic and collage on board
30cm x 30cm
£3,500-4,500



Lot 224

224
ARR **William Black (20th Century)**
Cold Sunlight
signed and dated lower right '71
oil on canvas
50cm x 74cm
£200-300

225
ARR **William Black (20th Century)**
Moon and Stone Circle
signed and dated lower right '72
oil on canvas board
37.5cm x 54cm
£200-300

226
ARR **William Black (20th Century)**
Twilight Harbour
signed and dated lower right '69
oil on board
47cm x 38cm
£200-300



Lot 225



Lot 226

227
 ARR **William Black (20th Century)**
 Harbour
 signed and dated lower right '68
 oil on canvas board
 18cm x 25cm
£200-300



Lot 227



228
 ARR **William Black (20th Century)**
 Winter Harbour
 signed and dated lower right '68
 oil on canvas board
 18cm x 25cm
£200-300

Lot 228

229
 ARR **Lillian Delevoryas (1932-2018)**
 Still Life with Vase of Flowers
 signed and dated lower right '82
 oil on canvas
 76cm x 60cm
£80-120

230
 ARR **Donald Henry Floyd (1892-1965)**
 The River Wye Below Tintern Abbey
 signed and dated lower left
 oil on board
 36cm x 48cm
£400-600



Lot 230

231
 ARR **Julian Barrow (1939-2013)**
 S. Giorgio and the Dogana, Venice
 signed lower right
 oil on canvas
 15cm x 20.5cm
 Provenance: with Morton Morris &
 Company, St James's, London.
£150-250

232
James Stuart Park (1862-1933)
 Still Life with Yellow and Red Roses
 signed lower right
 oil on canvas
 61cm x 91.7cm
 Provenance: *The Scottish Sale,*
Christie's, Edinburgh, 31st October
2002.
£400-600



Lot 232

233
 ARR **John Hubbard (1931-2017)**
 Landscape Study
 signed and dated lower left 1983
 charcoal
 89cm x 113cm
£400-600

234
 ARR **John Hubbard (1931-2017)**
 Vaucluse Study
 signed and dated lower right 1981
 oil on paper
 26cm x 24.5cm
£400-600

235
Nick Williams (20th/21st Century)
 Figure seated in a Moroccan
 hallway oil on board, initialled N G
 W dated 2001 60cm x 50cm
£20-40



Lot 233



Lot 234

236
 ARR **Jules René Hervé (1887-1981)**
 Parisian Market Scene
 signed lower right
 oil on canvas
 22cm x 27cm
£300-500

237
 ARR **Richard Price (born 1962)**
 Morning Reflections
 signed lower left
 oil on canvas board
 44cm x 34cm
£200-300

238
 ARR **Andrew Macara (born 1944)**
 Hoopla, Samos, Greece
 signed lower right
 oil on canvas
 51cm x 61cm
£600-800



Lot 236



Lot 238



Lot 240

239
ARR **Claude Buckle (1905-1973)**
Beach Repairs
signed lower left
watercolour
31cm x 44cm
£200-300

240
ARR **Claude Buckle (1905-1973)**
The Bridge, France
signed lower left
watercolour
33cm x 38cm
£200-300

241
ARR **Claude Buckle (1905-1973)**
Continental Washing Scene
with figures to foreground
signed lower left
watercolour
27cm x 37cm
£200-300

242
ARR **Arthur Henry Knighton-Hammond (1875-1970)**
Figures in a Market Square, San Remo
signed lower right
watercolour
32cm x 45cm
£100-150

243
ARR **Bernard Dufour (1922-2016)**
St Tropez '69
signed lower right
acrylic on board
45cm x 38cm
£60-80

244
ARR **Pat Cooke (1935-2000)**
Club Performer
watercolour
14cm x 17cm
bears label to the reverse
£150-200

245
ARR **Carl Toms (1927-1999)**
Pair of Costume Designs
signed
watercolour
36.5cm x 24cm (2)
£100-150

246
ARR **Anne Mortimer (born 1958)**
Study of Two Tabby Cats
signed lower right
watercolour
16cm x 15cm
£100-150

247
ARR **Anne Mortimer (born 1958)**
Study of a Cat
signed lower right
watercolour
13cm x 13cm
£100-150

248
ARR **Anne Mortimer (born 1958)**
Two Cat Studies
depicting cats surrounded by garlands
signed
watercolour
11cm x 8cm
sold with a copy of **Mortimer (Anne) Cats: A Cat-Lover's Gift**
Book, Dorking: Templar Publishing, 2007 (3)
£150-200



Lot 249

249
ARR **Reg Watkiss (1933-2010)**

Mountainous Landscape

signed lower right

oil on board

61cm x 122cm

£200-300

250
ARR **Charles William Bush (1919-1989)**

Mountainous Landscape

signed lower right

watercolour

26cm x 35cm

£80-120

251
ARR **Alexandra Janet Alderson (born 1934)**

Bull

signed and dated lower right '65

watercolour

27cm x 38cm

£60-80

252
ARR **Vicki Darken (born 1929)**

Rocky Landscape

signed lower right

oil on board

34cm x 44cm

£50-70

253
ARR **Alexandra Janet Alderson (born 1934)**

Large Abstract Composition

signed and dated lower right '69

oil on canvas

167cm x 168cm

£150-200



Lot 253



Lot 254

254
ARR **Erté (1892-1990)**
La chanteuse
costume design for the Folies Bergère, 1924
signed lower right
gouache and metallic
34cm x 25cm
Provenance: with the Grosvenor Gallery; Private
Collection, UK.
£300-500

255
ARR **Bernard Howell Leach (1887-1979)**
Study of a Thistle
signed and dated lower right '58
pen and ink
23cm x 16cm
£150-200

256
ARR **Alexandra Janet Alderson (born 1934)**
Abstract Composition
signed and dated lower right '65
mixed media on paper
37.5cm x 48cm
£60-80

257
ARR **Alexandra Janet Alderson (born 1934)**
Bullfighters
signed lower right
watercolour
41cm x 28.5cm
£60-80

258
ARR **Patrick Procktor (1936-2003)**
Mstislav Rostropovich
signed and dated in pencil lower right '82
pen and ink
28cm x 19cm
£100-150

259
ARR **Lucy-Ellen Boyd (born 1958)**
Boats on the Coast
signed lower right
oil on board
13cm x 20cm
£100-150

260
ARR **Alexandra Janet Alderson (born 1934)**
Portrait of Dame Joan Sutherland
signed lower left
oil on canvas
71cm x 61.5cm
£60-80

261
ARR **Sir Sidney Robert Nolan RA (1917-1992)**
Figure in a Landscape
signed lower right
mixed media
29cm x 24cm
£800-1,200



Lot 261

262
 ARR **Sir Sidney Robert Nolan RA**
(1917-1992)
 Mountainous Landscape
 signed lower right
 mixed media
 29cm x 24cm
£800-1,200



Lot 262

263
 ARR **Sir Sidney Robert Nolan RA**
(1917-1992)
 Paul, Listening to Anton Von
 Webern
 depicting a swan
 signed, inscribed and dated to the
 reverse 1960
 chalks and watercolour on post
 card
 8.5cm x 14cm
 Provenance: *bears Marjorie Parr*
label to the reverse.
£600-800



Lot 263

264

ARR **Sir Sidney Robert Nolan RA (1917-1992)**

Leda and the Swan

signed lower right

mixed media

30cm x 24cm

£1,000-1,500

265

ARR **Sir Sidney Robert Nolan RA (1917-1992)**

Reclining Figure

signed lower right

mixed media

24cm x 29cm

£800-1,200

266

ARR **Alexandra Janet Alderson (born 1934)**

Abstract Composition in Blue

signed in pencil lower right

watercolour and gouache

71cm x 100cm

£80-120

267

ARR **Guy Worsdell (1908-1978)**

Train on Viaduct

signed lower right

charcoal

20cm x 34cm

£50-70



Lot 264



Lot 265



Lot 268

271

European School, 20th Century

Surreal Townscape
with figure standing at window
oil on board
29cm x 34cm

£200-300

272

ARR **Richard Scott (born 1968)**

Yes, No, Maybe

acrylic on canvas, 175cm x 100cm
the reverse inscribed: 'Come in,
hold tight, ok ... go! 3144'

£1,000-1,500

273

ARR **Mark Maxwell (born 1966)**

Cloudscape V

signed and dated to the reverse
2016

oil on metal
110cm x 110cm

£100-150

274

ARR **Ronnie Wood (born 1947)**

Tiger (1995)

signed in pencil to margin, ed
213/295

screenprint in colours
47cm x 32cm

£200-300

268

ARR **Jamie Boyd (born 1948)**

Fox

signed lower right

oil on canvas

151.5cm x 121.5cm

£400-600

269

ARR **Alexandra Janet Alderson
(born 1934)**

Portrait of a Lady

seated, her arm outstretched

signed and dated lower right '83

pencil

101cm x 81cm

£100-200

270

English School, 20th Century

Royal Opera House, London

signed indistinctly

pen and ink with grey wash

60cm x 49.5cm

with four prints (5)

£80-120



Lot 271

275
 ARR **Mary Fedden RA (1915-2012)**
 Oppede le Vieux
 signed and numbered in pencil to
 margin 147/150
 lithograph
 27cm x 35.5cm
£200-300

276
 ARR **Gary Hodges (born 1954)**
 Elegance
 signed and numbered in pencil to
 margin 43/850
 monochromatic print
 54cm x 30cm
£80-120

277
 ARR **Gary Hodges (born 1954)**
 Family Matters
 depicting a Masai Giraffe
 signed and numbered in pencil to
 margin 557/850
 monochromatic print
 39cm x 16.5cm
£80-120

278
 ARR **Gary Hodges (born 1954)**
 Togetherness
 depicting a lion and a lioness
 signed and numbered in pencil to
 margin 137/995
 monochromatic print
 17cm x 60cm
£80-120

279
 ARR **Gary Hodges (born 1954)**
 Cheetah
 signed and numbered in pencil to
 margin 1127/1260
 monochromatic print
 34.5cm x 34cm
£100-150

280
 ARR **Gary Hodges (born 1954)**
 Lemurs
 signed and numbered in pencil to
 margin 557/850
 monochromatic print
 22cm x 54cm
£100-150



Lot 275

281
 ARR **Gary Hodges (born 1954)**
 Heat and Dust
 signed and numbered in pencil to
 margin 744/850
 monochromatic print
 44.5cm x 39cm
£100-150

282
 ARR **Archibald Standish Hartrick (1864-1950)**
 Metal Workers
 signed in pencil to margin
 tinted lithograph
 33cm x 54cm
£80-120

283
 ARR **Ethelbert White (1891-1972)**
 Three Cornered Hat
 set design for the Ballet Russes
 signed lower left
 print with hand colouring
 19.5cm x 23.5cm
 Footnote: *The artist's interpretations of scenes from the Ballet Russes first appeared in Cyril Beaumont's Impressions of the Russian Ballet in 1920.*
£150-250

284
Sydney Lee RA (1866-1949)
 The Gate House (1910)
 signed in pencil to margin
 wood engraving on wove paper
 12cm x 17.5cm
 Footnote: *Examples of the current engraving were exhibited at the Royal Society of Painter-Etchers and Engravers in London in 1921. The 16th-century collage gate depicted in the engraving leads from the high street into College Yard and the cathedral precincts at Rochester, Kent. It is also known as Jasper's Gateway.*
£100-150

285
 ARR **Louis Thomson (1883-1962)**
 Peace
 signed in pencil to margin
 no 4 from an unknown edition
 lithograph in colours
 17.5cm x 29cm
£80-120

286

ARR **Sir Terry Frost RA (1915-2003)**

It is True

from the *Lorca Suite* (1989)

signed lower right

etching and aquatint

55cm x 36cm

Provenance: *with the Katharine House Gallery, Marlborough; Private Collection, UK.*

£1,000-1,500



Lot 286

287

After **Eric William Ravilious (1903-1942)**

We will leave this paltry land

etching

17.5cm x 10.5cm

with three other illustrations from 'The Famous Tragedy of the Rich Jew of Malta' (1933)

and another print after the same artist (5)

£200-300

288

ARR **Angie Lewin (born 1963)**

The 1953 Coronation Mug

signed in pencil to margin, ed 24/75

lithograph in colours

41cm x 58cm

£200-300



Lot 288

289

David Jones (1878-1951)

Boxwood Printing Block for
'Abraham Lincoln' (circa
1924)

11.5cm x 8.5cm

with an engraving from the
same block and a copy of
Libellus Lapidum (3)

Provenance: with Gillian
Jason

Footnote: Woodblock for the
engraving to accompany
the Poem "John Drinkwater"
within "*Libellus Lapidum*", a
collection of satirical verse
accompanied by wood
engravings by David Jones
and Hilary Pepler, printed
and published by St.
Dominic's Press Ditchling,
Sussex and 350 Oxford Street
London.

The work relates to a
popular Play "Abraham
Lincoln" written by John
Drinkwater, which was first
performed in October 1918 at
the Birmingham Rep.
transferring to
Hammersmith Playhouse
London and on to Cort
Theatre Broadway in 1919. It
is interesting to note that
the Play was adapted for a
two reel short film made on
Lee De Forests sound on
Film Process.

Prints from this block after
the use in the publication of
Libellus Lapidum in 1924
included an edition of 446
published by Douglas
Cleverdon in 1981, and a
further edition of 60 printed
for Gillian Jason by Alan
Bultitude, with the
permission of the David
Jones Estate in 1989.

£800-1,200

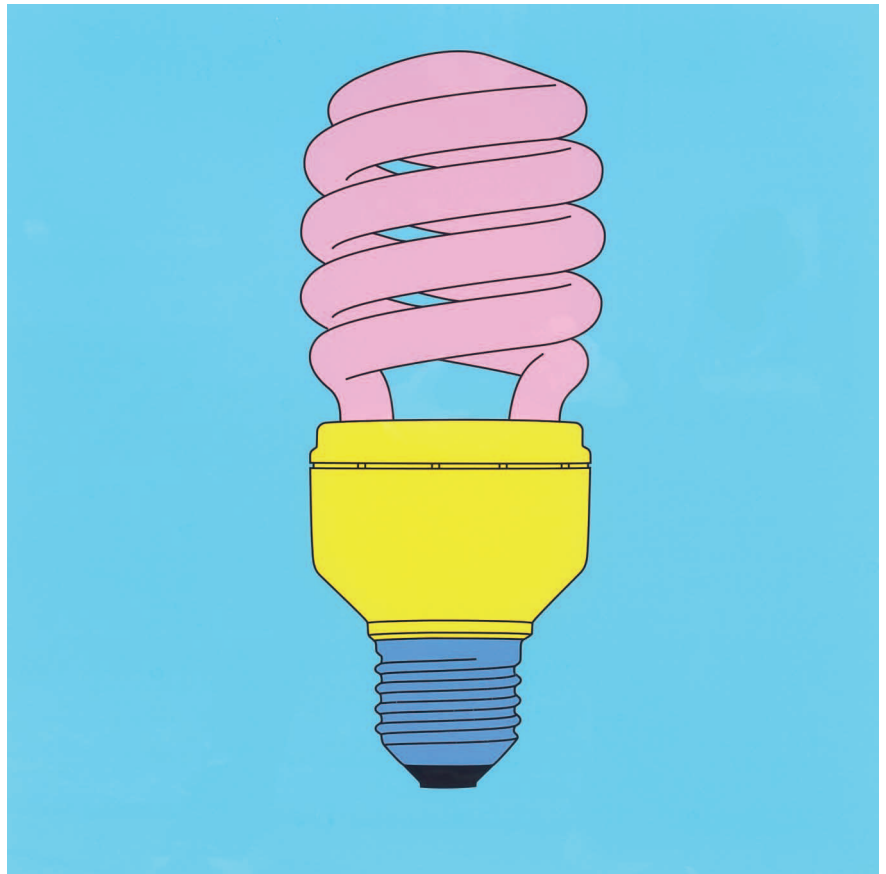


Lot 289

290
 ARR **Judy Sale (born 1946)**
 Bauhaus II (1991)
 signed in pencil to margin
 lithograph
 48cm x 67cm
£60-80

291
 ARR **Judy Sale (born 1946)**
 Bauhaus I (1991)
 signed in pencil to margin
 lithograph
 48cm x 67cm
£60-80

292
 ARR **Michael Craig-Martin (born 1941)**
 Lightbulb, 2015
 signed to lower right margin
 from an edition of 50
 digital inkjet print
 on Hahnemuhle Photo Rag Bright
 White 310gsm paper
 60cm x 60cm
£1,000-1,500



Lot 292



Lot 294

293
 ARR **Myrica Jones (born 1966)**
 Up Against the Wall I (half size),
 2023
 signed and dated, ed. 1/35
 inkjet print on Somerset velvet
 paper
 85cm x 100cm
£80-120

294
 ARR **Julian Trevelyan (1910-1988)**
 Macclesfield, 1968-9
 signed in pencil to margin, ed.
 53/75
 etching and aquatint in colours
 47cm x 34cm
£300-500



Lot 295

295
ARR **Dame Elisabeth Frink (1930-1993)**
Man and Horse II (1971)
signed lower right
ed 43/70
lithograph in colours
59.5cm x 79.7cm
£2,000-3,000



Lot 296

296
ARR **Alexander Calder (1898-1976)**
Quatre rouges, trois noirs, et une jaune
signed lower right, ed. 31/90
lithograph in colours on wove paper
73cm x 55cm
£2,000-3,000



Lot 307

297

Muirhead Bone (1867-1953)

Building a Liner at Greenock, on the Clyde
lithograph
52cm x 36cm
£80-120

298

ARR Frank Brangwyn (1867-1956)

The Wreck
lithograph in colours
19cm x 32cm
£80-120

299

ARR Beryl Cook (1926-2008)

Fairy Scene
signed in pencil to margin
lithograph in colours, 43cm x 27cm
£80-120

300

ARR Peter Booth (1927-2009)

Winter Landscape
signed in pencil to margin
artist's proof
lithograph in colours
71cm x 49cm
£60-80

301

ARR H J Jackson (born 1938)

Fish Wharf
signed in pencil to margin
artist's proof
linocut
53cm x 41cm
£50-70

302

ARR Barbara Robertson (1946-2018)

The Life of Riley
signed in pencil to margin, ed 12/18
lithograph in colours
57cm x 29cm
with a second lithograph by the same hand (2)
£60-80

303

ARR Patrick Procktor (1936-2003)

Early Morning, Venice
signed in pencil to margin
lithograph in colours
49.5cm x 34cm
£40-60

304

ARR Alfred Charles Stanley Anderson (1884-1966)

Cathedral Close
signed to lower right margin
etching
30cm x 40cm
£80-120

305

After Henri de Toulouse Lautrec (1864-1901)

Au cirque, vingt-deux dessins aux crayons de couleur
published by Goupil & Co., Paris, 1905

no. 174 from an edition of 200
original folio board covers,
comprising the full set of 22
lithographs in colour
overall folio 45cm x 33cm
£700-1,000

306

ARR John Piper (1903-1992)

Stones and Bones II
signed lower right, from an edition of 50
screenprint
50cm x 70cm
£300-500

307

ARR Geoffrey Clarke (1924-2014)

Man as a Cross IV
signed and dated lower left '58
monotype
50cm x 34cm
Provenance: *with the Redfern Gallery.*
£200-300

308

ARR Joan Miró (1893-1983)

'Les Essencies de la Terra per Miro'
publ. Ediciones Poligraha SA,
Balma 54 Barcelona, 1968
folio
£300-500

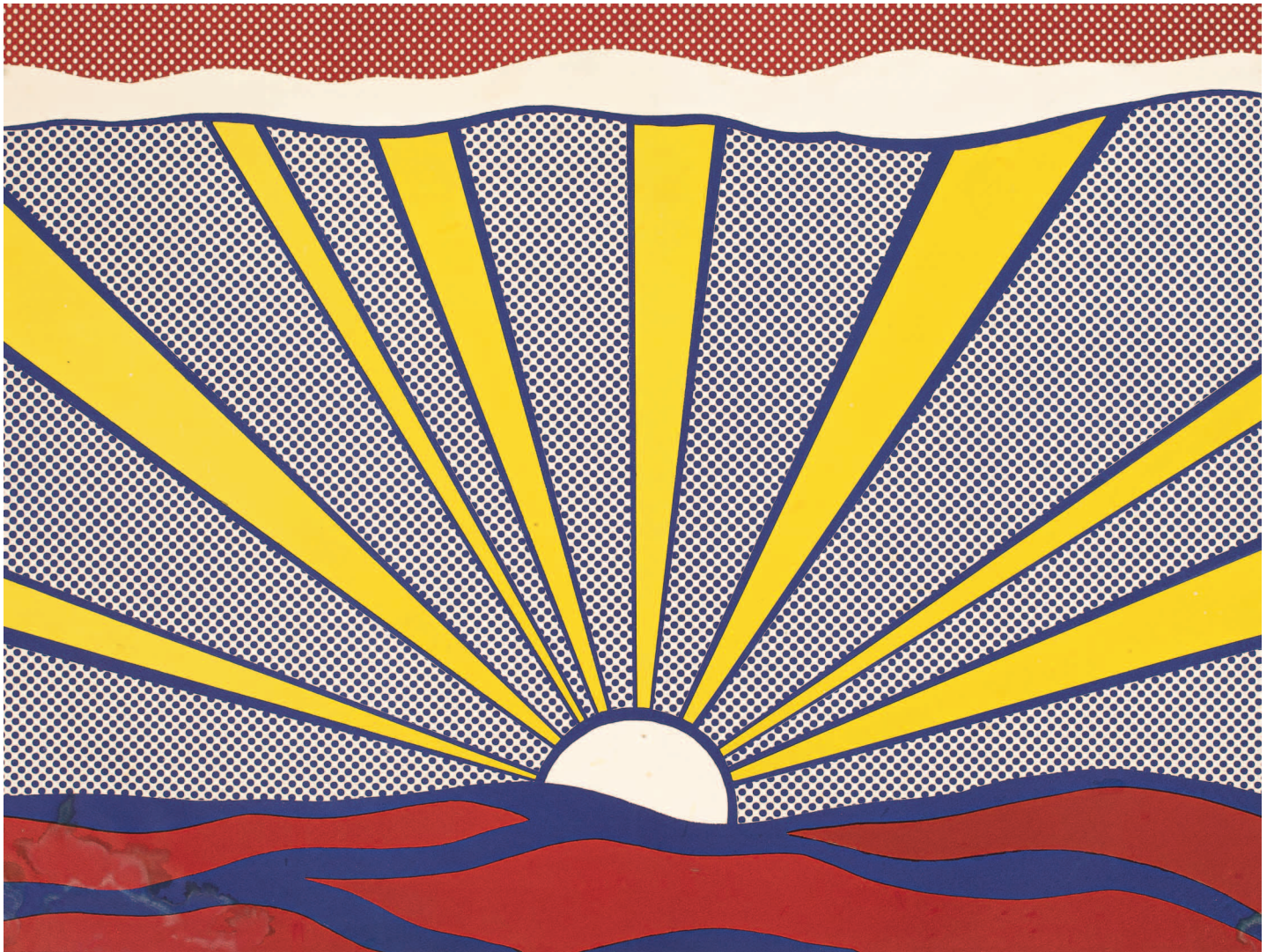
309

British School, 20th Century, a very large collection of art, museum and gallery posters, including an exhibition poster for Ben Nicholson's 1969 show at the Tate, a poster for the Silver Jubilee Exhibition of Contemporary British Sculpture, an exhibition poster for Lucie Rie's show at the Sainsbury Centre for Visual Arts in Norwich, along with many other posters for exhibitions for shows of works by British and European 20th Century Artists (qty)
£300-500



Lot 310

310
 ARR **Roy Lichtenstein (1923-1997)**
 Shipboard Girl (1965)
 signed in pencil to lower right margin
 from an unlimited edition
 published by Leo Castelli Gallery, New York
 offset lithograph in colours
 66cm x 48.5cm
£3,000-5,000



Lot 311

311

ARR **Roy Lichtenstein (1923-1997)**

Sunrise (1965)

signed in pencil to lower right margin

from an unlimited edition

published by Leo Castelli Gallery, New York

offset lithograph in colours

43.8cm x 59cm

£1,500-2,500



Lot 313

312
ARR **Bryan Pearce (1929-2006)**
St Ives All Round (1976)
signed in pencil to margin, ed 29/75
screenprint
48.5cm x 64.5cm
£200-300

314
After Henri Matisse (1869-1954)
Algue Verte
unsigned
silkscreen
47cm x 39.5cm
£100-150

316
After Jacques Hnizdovsky (1915-1985)
Poster for 'Twenty-Nine Woodcuts'
Exhibition
lithograph
81cm x 48.8cm
£100-150

313
Henri Matisse (1869-1954)
Madame de Pompadour (1951)
unsigned
lithograph in colours
80cm x 60cm
£300-500

315
ARR **Pablo Picasso (1881-1973)**
La Petite Corrida
unsigned
lithograph in colours
31.5cm x 24.5cm
£200-300

317
Henri Matisse (1869-1954)
The Dancer (1949)
printed by W.S. Cowell Ltd.,
published by School Prints Ltd.
lithograph in colours
49cm x 76cm
£100-150



Lot 321

318

ARR Edward Ardizzone (1900-1979)

The Fattest Woman in the World (1956)
published by The Curwen Press, for Guinness World
Records

lithograph in colours

54cm x 80cm

£150-200

320

Mickey Mouse Weekly Poster advertising 'Britain's
Best Value Weekly for Boys and Girls', depicting Mickey
Mouse holding a flag, published by Odhams Press Ltd.,
London, 76cm x 50.5cm overall

£200-300

319

European School, 20th Century, a collection of
twentieth-century exhibition posters advertising the
work of well-known European artists, with a particular
focus on Henri Matisse, comprising further posters
advertising exhibitions for the work of Marc Chagall,
Joan Miro, Jean Cocteau, Pablo Picasso and Georges
Braque, typically 76cm x 51cm

£100-150

321

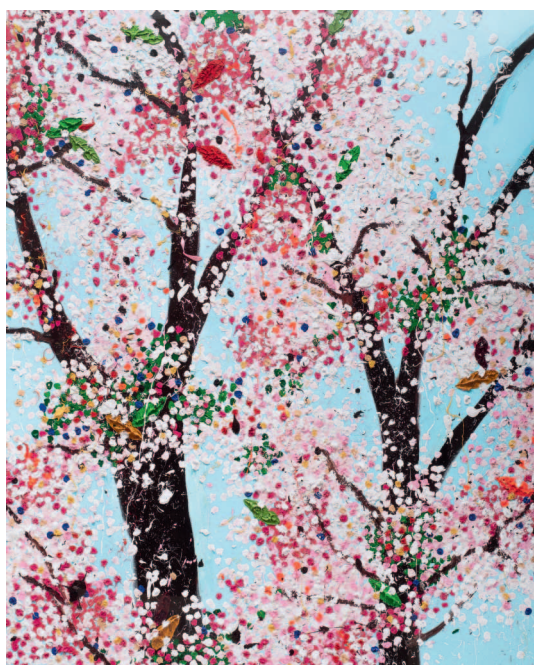
ARR John Piper (1903-1992)

Long Melford Church (Levinson 336)
from the edition printed by Curwen Studio
signed in pencil and numbered 48/275

lithograph in colours on wove paper

52cm x 67cm

£400-600



322

ARR **Damien Hirst (b. 1965)**

The Virtues (H9)

The complete set of eight laminated giclée prints on aluminium composite panels, 2021 each signed in pencil on the publisher's label affixed verso, each stamp-numbered Published by Heni editions, London, the full sheets, each 120cm x 96cm

Provenance: A private collector. Purchased directly from Heni Editions

Footnote: "The Virtues' (H9) was Hirst's second print series after his "garish and messy and fragile" 'Cherry Blossoms' (2018-20) paintings. The monumental canvases were made into a series of eight prints.

'Cherry Blossoms' was Hirst's self-professed "move away from Minimalism and the idea of the imaginary mechanical painter". In the original works' creation, Hirst filled his studio with canvases and worked on a number of them simultaneously. In 'The Virtues' Hirst used printmaking to experiment with technology, re-creating the impasto of the original works with giclée printing.

£60,000-80,000





323

ARR **Damien Hirst (born 1965)**

The Secrets (H14)

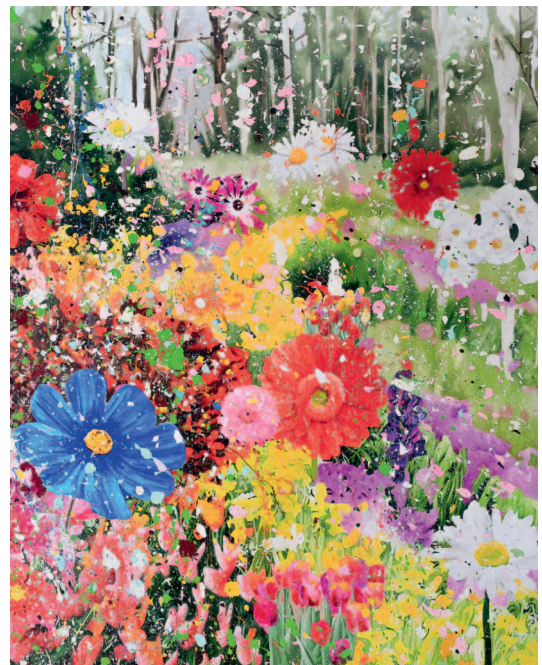
The complete set of eight laminated giclée prints, 2024 on aluminium composite panels Published by Heni Editions, London, each full sheet numbered and hand-signed on the label by the artist each 120cm x 93cm

Provenance: A private Collector. Purchased directly from Heni Editions.

Footnote: *The Secrets* by Damien Hirst is a series of eight prints which depict flourishing gardens after works from Damien Hirst's series 'The Secret Gardens Paintings'. The works "mark a natural evolution in Hirst's own practice, and his long engagement with the tension between realism and abstraction." Hirst said that he wanted the works "to feel like the hope and futility we get when we try to control nature"

The Secret Gardens Paintings were first shown at Frieze London in 2023 to mark the 20th anniversary of the fair. A selection of the paintings were on view at Château La Coste in March 2024 for a major exhibition of Hirst's sculptures and paintings, titled 'The Light That Shines'.

£25,000-35,000





Lot 324

324
ARR Laurence Stephen Lowry
(1887-1976)

The Level Crossing
signed in pencil to margin
offset lithograph in colours
46cm x 55.5cm

Provenance: purchased at Heritage Club, 407 Holloway Road, London, 28th August 1979, thence by family descent.

£1,500-2,000

326
Warhol (Andy) Moderna Museet
Exhibition Catalogue, Malmo: Stig
Arbman, 1968, 4to, paper wrappers
£100-150

327
[Paul Klee] Voltaire [Arouet
(François-Marie)] Candide, New
York: Pantheon Books, [1944], 4to,
publishers blue cloth and red
leather spine, Paul Klee illustrator,
limited edition numbered 'IV' of 50
copies bound by Gerhard Gerlach,
New York, with separate prints after
Paul Klee, one set of 26 prints on
yellow paper and another set of 26
prints on ivory paper in a pasted
envelope to back pasteboard,
original worn slipcase
£100-150

328
Raine (Kathleen) *The Seal Woman*,
drawings by Petra Freeman,
London: Royal College of Art
Illustration, elephant folio (58cm x
54cm), privately printed limited
edition in grey cloth, signed and
numbered 4/7 in pencil to final
page
£100-200

STUDIO CERAMICS





Lot 340

340
ARR **Dan Kelly (born 1935) a black glazed stoneware vessel** with incised vertical line to sides in white and inverted rim, 16cm high x 18.5cm wide
£200-300

341
A MacIntyre Moorcroft Florian Ware vase of narrow trumpet shape, frilled rim, tube lined with violets in yellow, blue and green, green painted signature to the base and brown printed mark, Rd no. 326470, 26cm high
£100-150

342
ARR **FG Moore**, a pottery model of four Vikings in a horse-drawn cart, 14cm wide
£60-80

343
ARR **Ashraf Hanna (born 1967)** a large raku fired vessel with linear decoration, incised ASH mark, 40cm diameter x 28cm high
£150-250

344
ARR **Camilla Ward (Contemporary)** a studio pottery vessel decorated in abstract slips and glazes, signed to base, 18.5cm wide x 16.5cm high
£80-120

345
ARR **Peter Wills (born 1955)** a porcelain footed dish with yellow glaze and dripped manganese rim, impressed marked to base, 18cm diameter x 7cm high
£100-150

346
ARR **Peter Wills (born 1955)** a porcelain bowl, cream with bronze and yellow lines to inside on a dark bronze footed base, incised marks to base, 17cm diameter x 9cm high
£100-150

347
ARR **David Cleverly (Contemporary)** an earthenware figure group 'A Peaceable Day in Paradise...A Quiet Day in Eden', Adam and Eve sat atop a Hippo, 31cm high x 40cm wide
£200-300

348
ARR **Ross Emerson (Contemporary)** a studio pottery three branch candelabra, signed to base, 32cm high
£50-80

349
A Moorcroft 'Dawn Landscape' bowl, decorated in blue with trees in an undulating landscape, geometric border, 21.5cm diameter.
£200-300

350
A Plichta cat, decorated by Nekola in the style of Wemyss
£180-220

351
Three pieces of Anita Harris pottery, comprising a teardrop vase decorated with 'Hot Coals' pattern, 31cm high, a model of a bottle kiln, 22cm high and a square wall plaque with a glazed pattern of blossom, inscribed to reverse 'To Henry + Barbara, from Anita', 26cm square

352
Five pieces of Poole pottery, to include a Volcano vase, 19cm high, another dark glazed vase, 20.5cm high, a Leo the Lion pattern small flared vase, 15cm high, a similar sugar bowl and cover, 5.5cm high and a small floral oblong dish, together with a Holkham Pottery green and cream lamp, 37.5cm high (needs re-wiring) (6)
£60-80

353
An Art Deco pottery pedestal dish, 18cm high and a pair similar, in cream and heightened in gilt.
£80-120

354
ARR **Derek Morris (born 1940)** a sculptural ceramic form, approximately 38cm wide x 28cm high
£40-60

355

ARR **Dame Lucie Rie (1902-1995)**
a stoneware volcanic type vase with
slender neck and flared rim
decorated blue and pink trailed
glazes, impressed seal, 33cm high
£8,000-12,000

356

A stoneware vase, decorated
celadon rim and shoulder above
dark brown glazed body, stamped
H to base, 33cm high.
£100-150

357

ARR **Jim Malone (born 1946)** a
stoneware bowl in green glaze
decorated dash design, impressed
JM seal, 23.5cm diameter x 11.3cm
high
Provenance: *Private Collection,*
London
£100-150



Lot 355



Lot 358

358

ARR **Gordon Baldwin (born 1932)**
a large footed earthenware square bowl with round well in black lustre glaze, four raised nodes to rim, 38cm square x 16cm high
£600-800



Lot 359

359

ARR **David Leach (1911-2005)**
a stoneware vase, glazed in oatmeal over tenmoku glazes with a foxglove resist design, impressed DL and Lowerdown Pottery seals, 16cm high
Provenance: *The Chestnut Gallery Collection*
£150-250



Lot 360

360

ARR **David Leach (1911-2005)**
a stoneware globular jar decorated with white and iron glazes, impressed DL seal, 22cm high
Provenance: *The Chestnut Gallery Collection*
Exhibited: *The Chestnut Gallery 10th Anniversary Exhibition 1990*
£200-300



Lot 361



Lot 362

361

ARR **John Maltby (1936-2020) a small footed stoneware dish**, the centre decorated incised design of a stylised church with trees and stars on a yellow ground with green splashes, painted signature, 17.5cm wide x 15.8cm diameter

Provenance: *The Chestnut Gallery Collection. Acquired directly from the Artist.*

£150-250

362

ARR **John Maltby (1936-2020) a rectangular stoneware footed dish** decorated stylised white and black bird on a light brown ground with abstract patterns in red and black, painted signature, 22cm x 17.5cm

Provenance: *The Chestnut Gallery Collection, Acquired directly from the Artist.*

£250-350



Lot 363



Lot 364

363

ARR **John Maltby (1936-2020)** a **stoneware square dish** decorated crosses and abstract patterns in red and blue glazes, painted signature, 25.5cm x 25cm

Provenance: *The Chestnut Gallery Collection.*

Acquired directly from the artist.

£250-350

364

ARR **Mary Rich (1940-2022)** a **porcelain bowl**, decorated pink and lilac bands with gold geometric patterns, impressed M seal, 25.5cm diameter x 9.5cm high

Provenance: *The Chestnut Galley Collection.*

Acquired directly from the artist.

£150-250



Lot 365

365
 ARR **Mary Rich (1940-2022)**
a tall porcelain bottle vase with
 flared rim decorated stylised bands
 of geometric gilt patterns within
 bands of pink and blue, impressed
 mark, 41cm high
£200-300

366
 ARR **Mary Rich (1940-2022)**
a porcelain bottle vase decorated
 pink and lilac bands with gold
 geometric patterns, impressed M
 mark, 24.5cm high
£150-250



Lot 366



Lot 367

367

ARR **Sandy Brown (born 1945)**
a stoneware footed platter

decorated abstract and trailed
designs in blue, pink, green and
yellow on a cream background,
painted signature to base, 33.2cm
diameter x 9.6cm high

£150-250



Lot 368

368

ARR **Geoffrey Whiting (1919-1988)**
a rectangular stoneware bottle

vase in tenmoku glaze decorated
stylised leaf motif, 24.3cm high x
12cm wide

Provenance: *The Chestnut Gallery*
10th Anniversary Exhibition, 1990

£150-250



Lot 369

369
 ARR **Antonia Salmon (born 1959)**
a smoke fired earthenware vessel
 with mottled grey and brown
 surface, incised AS mark, 39.3cm
 wide, 27.2cm deep, 33.8cm high
 Provenance: *The Chestnut Gallery*
Collection. Acquired directly from
the potter.
£200-300



Lot 370

370
 ARR **David Leach (1911-2005)**
a deep stoneware bowl in
 tenmoku glaze decorated incised
 lines and dash design to body,
 impressed DL seal, 16.5cm high
 Provenance: *The Chestnut Gallery*
Collection
£200-300



Lot 371

371
 ARR **William Marshall (1923-2007)**
a stoneware shallow dish in
 tenmoku glaze decorated incised
 lines to rim, impressed seal to base,
 24cm diameter
£200-300

372

ARR **Dan Kelly (born 1953) a small porcelain matte white vessel**, the tapering oval body with inverted rim, 13cm high x 10.3cm wide

Provenance: *The Dayabandhu (Michael Evans) Collection, London. Acquired from Austin Desmond Fine Art, London, 2003*

£100-200

373

ARR **Dan Kelly (born 1953) a small dry black glaze conical vessel** with white glaze in impressed line at rim and shoulder, 16cm high

Provenance: *The Dayabandhu (Michael Evans) Collection, London*

£100-200



Lots 372 & 373



Lot 374

374

ARR **Gordon Crosby (born 1935) an earthenware pot** with 'torn' sides decorated in brown and white, black, and pale blue slip and glazes, incised initials to body, 21cm wide

£100-200

375

ARR **John Maltby (1936-2020) 'Blytheburgh' stoneware lidded box** decorated in brown and cream slips, the lid with a figure of a reclining angel, raised on four feet, impressed M seal, 20.5cm wide, 6.5cm deep, 15cm high

£200-300



Lot 375

376
 ARR Aneta Regel (Polish, born 1976) an abstract sculptural form in brown glazes with white splashes, 12.5cm wide x 23.5cm high
£400-500



Lot 376



Lot 377

377
 ARR Glen Wild (South Africa) a tall cylindrical black matte stoneware vase with lug handle, 40cm high
£200-300

378
 Charles Bound (American, born 1939) a large globular stoneware pot, roughly textured surface in brown and grey glazes, approximately 34.5cm high x 36cm wide
£200-300



Lot 378

379

ARR Dan Kelly (born 1953) a dry black glaze
stoneware vessel with white painted line to
front and back and folded rim, 63.5cm high
Provenance: *The Dayabandhu* (Michael
Evans) Collection, London
£250-350





Lot 380

380

**ARR Robin Welch (1936-2019) a
cylindrical stoneware vase**

decorated bands of mottled lilac,
brown and gold glazes, impressed
RW mark to base, 31.5cm high

£100-150

381

ARR **Chris Carter (born 1945)** a
large stoneware vase with mottled
green abstract design on pink and
lilac ground, squeezed oval rim,
impressed CCP seal, 55.5cm high,
20cm wide, 24cm deep
Provenance: *Private Collection,*
London
£300-400



382

A large stoneware cut-sided vessel with rough finish, approximately 44.5cm high
£50-60

383

Paul Jackson (born 1954) studio pottery jug, geometric design in black, white and red, signed to base no. 15, 19cm high
£150-200

384

A Highland Stoneware charger with floral decorated on a blue ground, 36cm in diameter, a brown glazed studio pottery bowl, WG incised mark to base, 29.5cm in diameter and a blue glazed bowl, indistinctly signed to the base, 26cm in diameter (3)
£40-60

385

P & M Thomas, Berwick, a stoneware dish with floral decorated, signed to base, 25cm in diameter and a Simon Eeles studio pottery vase, incised marks to base, 15cm high (2)
£40-60

386

Syl Macro Ceramics (Contemporary) a studio pottery vase, decorated with trees in a landscape, 11cm high, a Natalie Haynes pottery bowl, 18.5cm in diameter x 10.5cm high and six small studio pottery bowls, yellow and brown glazes, incised marks to base ft, 12.5cm in diameter (8)
£50-70

387

A Colin Kellam Totnes pottery table lamp, fushia design, 28cm high and a Stephen Pearce (born 1943) earthenware vase, with white slip glaze, impressed marks SP. MD, 38cm high (2)
£80-120

388

ARR Ruth Barrett-Danes (born 1940) a porcelain sculpture of two frogs entwined, initialled to base, 11cm high
£100-150

389

ARR Ruth Barrett-Danes (born 1940) porcelain vessel of two entwined creatures, 20cm high
£200-300



Lots 388 & 389



Lot 391

390

ARR **Peter Layton (born 1937)** a **small frosted bowl** decorated blue flowers and trailing lines to a pink background, signed to base, 20.5cm wide
£150-250

391

ARR **Mary Rogers (born 1929)** a **porcelain organic form with flared sides**, decorated brown dot pattern to a cream base, impressed MER to base, 12cm high x 15.5cm wide
£300-400

392

ARR **Ewen Henderson (1934-2000)** an amphora shaped vessel decorated poured cream glaze, 30cm high
£400-600

393

A studio pottery vessel/sculpture, three horns twisted with opening, 34cm high, 50cm wide approx.
£100-150

394

ARR **Rosemary Wren (1922-2013)** a stoneware sculpture of a squirrel, 18cm high and another stoneware sculpture of an owl, 13cm high both with impressed marks to base, £200-300

395

Charles Stone (20th Century) an earthenware sculpture of a village, with impressed marks to reverse, 8.8.78 CS, 19.5cm high and a oval studio pottery sculpture with an townscape to the inside, impressed marks to reverse IRR?, 19cm wide, 17cm high (2)
£50-80



Lot 392

396

ARR **John Maltby (1936-2020)** a stoneware architectural building front with two handled pedestal urn, the pedestal with M impressed mark, 22cm wide, 16cm high
£100-150

397

ARR **Rosemary Wren (1922-2013)** 'The Cromartie Firth; Alness September 1992', 'Creag Ulladail' and 'Rainbow over Dingwall', (3)
£150-200

398

ARR **Elizabeth Raeburn (born 1943)** wavy slab form, glazed with landscape, impressed marks to reverse, 26cm wide, 22cm high
£30-50

399

ARR **Rosemary Wren (1922-2013)** a stoneware sculpture of a cat 'Shadow Cat II', 21.5cm high
£80-120

400

A studio pottery pig, 20th Century, raku fired, in the stile of Michael Flynn, unmarked, 33cm wide, 15cm high and a studio pottery horse, marked SH to base and dated '95, 52cm wide, 30cm high
£70-100

401

ARR **Denise K Wren (1891-1979)** stoneware sculpture of a figure riding an elephant, impressed marks to base, 20.5cm high
£50-80

402

ARR **Barbara Cass (1921-1992)** for **Arden pottery**, a stoneware bowl in browns and creams, signed to base, 32cm in diameter, 23cm high
£70-100

403

A large 20th Century studio pottery dish, in browns and creams, unmarked, 51cm in diameter, 6cm high approx.
£60-90



Lot 396



Lot 403



Lot 407

404
A 20th Century studio pottery slab, textured to reverse with white and brown glaze, unsigned, 35cm wide, 31cm high and a studio pottery cylindrical shaped vessel, 30cm high (2)
£50-70

405
ARR Eileen Lewenstein (1925-2005) a cream matt glaze rectangular vessel, impressed marks to base, 25.5cm high
£80-120

406
ARR John Maltby (1936-2020) a stoneware sculpture with table, jug and vessels, impressed maker's mark, 25.5cm high x 23cm wide
£80-120

407
ARR Anthony Theakston (born 1965) a cobalt salt glaze jug, 29cm high and a white salt glaze jug, 25cm high, both signed to base
£200-300

408
ARR **Mary Rogers (1929-2012)**
a porcelain vase with frilled
rim, maker's mark to base,
34cm high
£300-500





Lot 417

409

ARR John Bedding (born 1947) a tea bowl in blue/green glaze, impressed marks to base and five other tea bowls, various makers (6) **£50-70**

410

A studio pottery sculptural form in black with blue and turquoise glaze to top edge, monogram WK to base, 43cm high **£40-60**

411

Eleven small studio pottery vases and bowls, various coloured and neutral glazes, some with marks, the largest bowl 10cm diameter. **£70-100**

412

ARR Gwyn Hanssen Pigott (1935-2013) a part dinner service in greens and browns and a single jug **£100-150**

413

Two studio pottery tiles, a pottery rectangular lidded box, incised line decoration to lid, 14cm wide, 8.5cm high, 8.5cm deep, unmarked, a square shaped dish, impressed mark, 16cm x 17.5cm and a platter in cream glaze with brown abstract design to centre, incised JB to reverse, 23cm diameter (5) **£60-90**

414

A studio pottery plate, blue salt glaze, impressed AR mark (possibly The Friar's Pottery), 32cm diameter and a rectangular footed dish, reddish brown glaze, impressed mark, 37cm x 28cm (2) **£60-90**

415

ARR Ann Kenny (Contemporary) a studio pottery bowl in copper and brown/black glaze, 7cm diameter, a miniature fluted studio pottery vase, incised mark to base, 7cm high, two small bowls/tea bowls and a pottery dish (5) **£40-60**

416

A bottle vase in brown glaze with cream abstract design, 23cm high, a squat stoneware vase with brown and grey slip glaze, impressed seal, 12.5cm high, a brown glazed bottle vase with blue slip glaze over, impressed seal mark, 19cm high and a six-sided vase in grey glaze with brown streaks, 13cm high (4) **£50-70**

417

ARR Paul Barron (1917-1983) a stoneware bottle vase of compressed form in tenmoku glaze with white mottled glaze line decoration, impressed seal to base, 26.5cm high **£150-200**

418

ARR Barbara Cass (1921-1992) for Arden Pottery, a studio pottery jug, 26.5cm high, a Barbara Cass bud vase with oatmeal drip glaze over, incised monogram BC to base, 20cm high and a raku glaze vase, impressed maker's mark, 15cm high (3) **£80-120**

419

Robert Wallace Martin for Martin Brothers, a stoneware flask of waisted square form with incised and painted floral decoration in browns, greens, greys and blues, incised R W Martin Bros London Southall
£300-500

420

ARR Denise Wren (1891-1979) an Oxshott Pottery stoneware goblet in turquoise and brown glaze with ribbed incised detail, 13.5cm high, a double gourd vase in yellow and brown glaze, maker's mark YY? incised to base, 17cm high, a brown glazed jug, incised mark to base, 18.5cm high and a pair of studio pottery soup bowls with brown glazed interior,, 6.5cm high (5)
£60-80

421

A collection of small bowls, to include two by Poh Chap Yeap (1927-2007) one celadon glazed porcelain, 15cm diameter, the other speckled stoneware, 16cm diameter, six others similar, and three miniature studio pots, the largest 3cm high (11)
£150-200

422

ARR Janet Leach (1918-1997) a stoneware bottle vase in ash glazes, seal mark to base, 15.5cm high
£200-300

423

Four circular lidded boxes, two in smoky brown glazes with domed lids, the largest 8.5cm diameter
£40-60

424

A pouring bowl with oatmeal glaze, impressed seal mark to base, 23cm diameter, a grey blue glazed bowl, 13cm high x 15.5cm diameter and a grater dish, turquoise glaze to rim, 15.5cm diameter (3)
£40-60

425

A small pottery model of a screen decorated a fish to one side, makers mark to base, 12cm high x 14.5cm wide, a lidded jar in salt glaze, KK seal mark to base, 10.5cm high x 11cm diameter, a treacle glazed cut-sided bowl, makers stamp to base, 11cm high x 11cm diameter (3)
£40-60

426

A studio pottery charger/dish, incised mark to base, 39.5cm diameter, brown glaze and oatmeal rim, with a makers seal stamp to base, a square sided raku and brown glaze vase, 23cm high, a cut-sided vase, brown glaze with oatmeal drip to rim, K mark to base, 18cm high (3)
£60-80

427

A Winchcombe Pottery treacle glaze vase, impressed seal mark, 34cm high, a studio pottery jug with dark brown and green glaze, 31cm high, unmarked, a plain studio pottery jug, 19.5cm high, incised mark to base and a lidded square sided pot, 19cm high (4)
£50-70

428

A blue glaze vessel with raised decoration, JC marks to base (possibly James Campbell), 11cm high x 10cm wide, a baluster vase, glazed brown and white rim, 11cm high and an irregular shaped bowl with shell mark to base, 24cm wide (3)
£40-60



Lot 422



Lot 429

429

ARR **John Maltby (1936-2020)**
a **footed tea bowl** with geometric
pattern design, impressed mark,
9cm high
£200-300

430

ARR **Pat Shilston (born 1923)**
a **porcelain vase** with graduated
pastel geometric decoration to
cream ground, initialled PS to base,
15cm high, a green blue glazed
bowl, incised initials HWS to base,
14cm diameter, a cream/grey
glazed teapot with cane handle
marked C to base, 18cm high
handle up, a cream glazed
cylindrical vase, impressed mark to
base, 14.5cm high and a celadon
glazed bowl, 18cm diameter x
11.5cm high (5)
£60-80

431

ARR **Joanna Constantinidis,**
a **studio pottery teapot**, impressed
seal mark to base, 18cm high
including handle
£60-80

432

A **stoneware vessel** in ash glaze,
WK mark to base (possibly by
Walter Keeler), 30cm high, a lidded
cream glazed stoneware vessel
with scrollwork handles on a flat
base, impressed seal mark WK,
22cm high and a black and green
glazed vase, WK mark to base, 11cm
high (3)
£100-150

433

ARR **Bernard Leach (1887-1929)**
a **studio pottery dish** in grey and
cream glazes, impressed seal mark
to base, 16cm diameter
£70-100

434

Three studio pottery items, a bowl
with impressed mark O, 7.5cm in
diameter, 9cm high, a celadon
glazed vase, 13.5cm high and a
squat vase, 7.5cm high
£80-120

435

A **studio pottery goblet** with
tapering long stem, grey glaze,
unmarked, 49cm long
£40-60

436

Various studio pottery plates in
brown and cream glazes, thirteen
dinner plates, 24cm diameter and
eight side plates, unmarked, 18cm
diameter (21)
£50-80

437

ARR **Poh Chap Yeap (1927-2007)**
**two studio pottery teapots with
cane handles**, signed to base, 16cm
and 19cm high including handle,
another unsigned teapot and two
lidded jars (5)
£100-150

438

ARR **Michael Cardew (1901-1983)**
**for Wenford Bridge Pottery a
studio pottery bowl**, treacle glaze
with cream glaze interior,
impressed marks, 24.5cm diameter
x 15.5cm high and another studio
pottery bowl with green glazed
interior, impressed IR marks to
base, 24cm diameter x 10cm high
£150-200

439

**An abstract bronze effect
sculptural vessel** with shaped rim
decorated black and white checked
design on a rectangular stepped
marble plinth, unsigned, the vessel
27cm wide x 36cm high (56cm
high including base)
£100-150

440

ARR **David Leach (1911-2005)**

a stoneware bottle of square form glazed in oatmeal on brown with an abstract tree resist design, impressed maker's DL seal, 23.5cm high

£80-120

441

ARR **Phil Rogers (1951-2020)**

a tenmoku glazed teapot with cane handle, 21cm high (including handle), a tenmoku glazed jar and cover, label to base 'confirmed by Phil Rogers one of his pots made c.1980 7/9/12', 23cm high, a celadon glazed unomi, with comb design, impressed mark, 11cm high and another in tenmoku glaze with oatmeal glaze to rim, impressed mark, 10cm high (4)

£200-300

442

ARR **Geoffrey Whiting (1919-1988)**

a stoneware bowl with painted iron glaze design to well against a blue ground, impressed seal mark, 20cm diameter and a smaller bowl in green/brown glazes, impressed seal mark, 10.5cm diameter x 7.5cm high (2)

£100-200

443

ARR **Tim Andrews (born 1960)**

a raku fired vase, 25.5cm high and a smaller vase, 13cm high, both with TA seal mark (2)

£100-200

444

ARR **Ruth King (Contemporary)**

a carved vessel decorated leaf design, stamped to base, 18cm x 15cm

£120-180

445

ARR **Mike Dodd (born 1943)**

a celadon glazed flagon with incised stylised leaf design, 24cm high

£80-120



Lot 440



Lot 442



Lot 444

446
ARR **Janice Tchalenko (1942-2018)** a **stoneware bowl** decorated with stylised green flower to interior with abstract designs in blue, yellow and black, 23.5cm diameter
£40-60

447
ARR **Barry Guppy (1937-2013)** a **studio pottery bowl**, decorated with a textured snowy landscape in cream, black and blue, impressed maker's seal, 19.5cm diameter x 14.5cm high
£60-80

448
ARR **Takeshi Yasuda (born 1943)** a **stoneware unomi** in graduated brown glaze decorated with stylised flower-motif stamp to body, impressed maker's mark, 9.5cm high x 9cm diameter
£60-80

449
ARR **Edmund De Waal (born 1964)** a **stoneware pouring dish** in grey crackle-glaze, impressed mark to base, 24cm diameter
£100-150

450
ARR **Clare Conrad (born 1949)** a **layered slip vessel** with texturised diamond-shape design in shades of terracotta and blue-satin matte glaze to interior, impressed mark, 11cm high x 12cm diameter
£60-80

451
ARR **David Howard Jones (born 1953)** a **raku bowl** in brown and white glaze with abstract design to cut-out V in rim, the interior in purple lustre glaze with abstract V-shape motif, 13.5cm diameter x 12cm high
£40-60

452
ARR **Sid Tustin (1913-2005)** a **small slipware plate** in yellow and brown glazes with wavy decoration to border, impressed mark, 16cm diameter and a small slipware bowl with feathered decoration, impressed mark, 12.5cm diameter
£30-40

453
Winchcombe Pottery, a slipware oval dish in yellow and brown glazes with wavy motif decoration to centre and border, impressed mark, 26cm wide
£80-120

454
ARR **Jonathan Phillips (Contemporary)** a **set of six celadon glazed coffee cups**, 8.5cm high with matching saucers, 11.5cm diameter, impressed maker's mark to base, with another coffee set in tenmoku glaze by same maker
£60-80

455
ARR **Elsbeth Owen (born 1938)** an **ovoid studio pottery vessel** with textured glaze, 16.5cm high
£80-120

456
ARR **Peter Wright (1919-2003)** a **ceramic sculpture of a couple embracing**, two interlocking figures, incised signature and numbered 1/200 to base, 26cm high
£80-120

457
Dante Baldelli (1904-1953) and Corrado Cagli (1910-1976) for Rometti Umbertide, circa 1930, a vase 'Scena di Caccia', decorated with an Umbrian hunting scene, incised 'Rometti Umbertide' to base (15.5cm high, 14.5cm diameter at fullest point)
Footnote: Corrado Cagli (1910-1976) was an Italian artist associated with the Futurist painters including Balla and Dottori, who studied at the Accademia di Bella Arte in Rome with Dante Baldelli (1904-1954), director of the Rometti ceramic workshops from 1928-1954. Baldelli employed Cagli as a surface designer from circa 1928-30 and Cagli was likely responsible for the decorations and Baldelli for the forms of objects during this period. After leaving, Rometti continued to produce Cagli pieces for around two years, the colourful dynamic backgrounds and repetitive Futurist motifs of travel and movement being typical of his work. The style has occasionally been referred to as 'Fascist ceramics' due to the use of Classical forms and Imperial Roman iconography and the period in which these items were manufactured. Ref Italian Art Ceramics Valerio Terraroli Skira 2007 cat; 412-432, For a similar design, see 'Le Ceramiche Rometti', p. 47
£500-700



Lot 449

458

Della Robbia, an Art Nouveau pottery vase, dated 1900, by Charles Collis and Liz Wilkins, pear shaped with knopped neck, incised and painted flowers and leaves in reserves in turquoise, green and brown, the base with incised and painted marks, 35cm high
£600-800

459

A near pair of Art Nouveau Royal Doulton stoneware baluster vases by Florrie Jones, with tube-lined panel design and rosettes decorated mainly in green and blue, impressed Royal Doulton circle mark, 78224 and monogram FJ, 32.5cm and 33cm high
£80-120

460

Winchcombe Pottery, two cider flagons with wavy line decoration, wooden tap and cork stopper, each 34cm high
£30-50

461

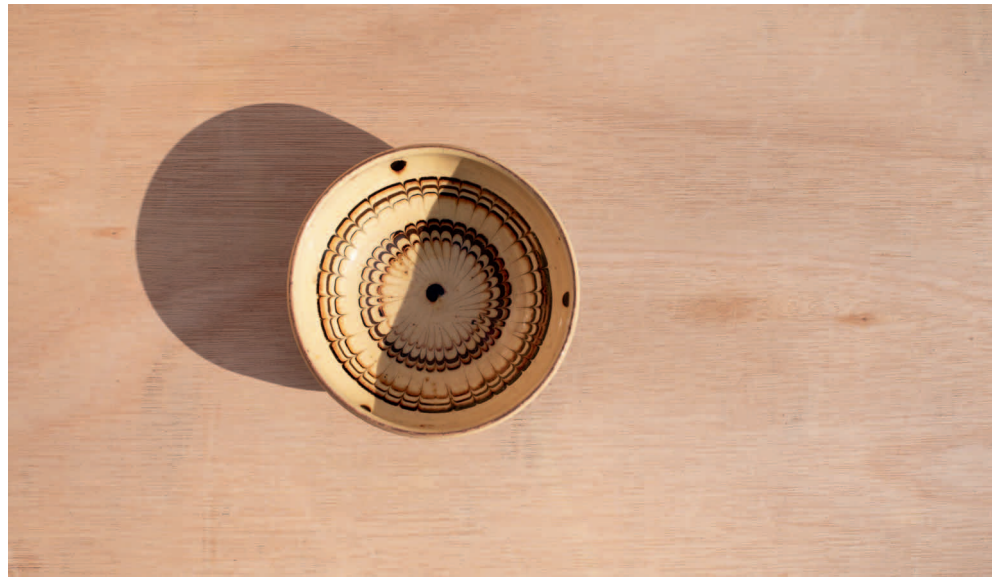
ARR **Kate Malone MBE (born 1959)** a vase decorated polychrome blue, yellow, green and orange glazes, 16cm high and a Kate Malone stoneware candlestick decorated turquoise, yellow and blue glazes with applied spike decoration to exterior, 16.5cm high
Provenance: *with signed note from Kate Malone confirming she is the maker*
£80-120

462

ARR **Sasha Wardell (born 1956)** a porcelain jug decorated with polychrome pastel stripes, incised initials to base, 23cm x 13cm, **John Gibson (Contemporary)** a pottery vase with flared rim decorated stylised flowers and oriental motifs in pink and blue on pale blue ground, signed, 27cm high and **West Marshall (Contemporary)** a white glazed mug with blue line decoration and wavy rim, stamped to base, 12cm high
£40-60

463

ARR **Rachel Wood (born 1962)** a wood bark design vessel with textured surface, incised W to base, 17cm x 18cm
£20-30



Lot 452 (part)



Lot 452 (part)

An abstract sculpture made of clear, translucent glass. The piece consists of numerous interconnected, flowing, and branching forms that resemble liquid captured in time. The glass has a smooth, polished surface that reflects light, creating highlights and shadows that emphasize its organic, almost cellular structure. The overall composition is dense and intricate, with many small, rounded protrusions and deep, irregular indentations. The sculpture is set against a solid black background, which makes the transparent glass stand out prominently.

GLASS

464

Rene Lalique (1860-1945) a Poissons bowl, opalescent with etched mark to base 'R. Lalique France', 21cm diameter, 7.5cm high, together with a opalescent glass bowl with acanthus leaf decoration by Jobling & Hannibal, marked 'Made in France A.H.', 21cm diameter and a further bird decorated glass bowl with cast registration mark 780717 and a further etched mark, 19cm diameter (3)
£120-180

465

Three Kosta Boda bud vases, by Bertil Vallien, the largest 10cm high, together with a taller Kosta Boda vase, 20.5cm high (4)
£40-60

466

A glass and onyx mantel timepiece in the manner of Lalique, the eight-day Swiss movement set in a moulded case decorated with nude figures on a rectangular base, 16cm wide x 13.2cm high
£150-200

467

An Art Nouveau Loetz style iridescent glass rose bowl of lobed form, 15cm high and a blue and red mottled glass bowl, 22cm diameter x 13cm high
£40-60

468

John Selbing for Orrefors, a rectangular glass vase etched with a female figure holding a ship aloft, 25.5cm high
£80-120

469

ARR Peter Layton (born 1937) a swirl dropper glass vase in orange with purple and lilac swirl decoration etched signature and dated 2008, 19.5cm high
£150-250

470

ARR Siddy Langley (born 1955) two glass bowls decorated stylised pink hearts and trailing lines on an iridescent ground, both signed and dated 1986, the larger 21.5cm diameter, 11.5cm high, the smaller 16.5cm diameter, 10cm high
£150-250

471

ARR Peter Layton (born 1937) two studio glass vases and a bowl, all decorated abstract landscape design with multi coloured details to a blue, yellow, green and pink ground, the cylindrical vase, 32cm high, ovoid vase 27cm high and bowl, etched signature, 23cm diameter
£400-600

472

ARR Peter Layton (born 1937) a studio glass vase in various shades of blue, the ribbed body with undulating rim, etched signature to base, 15.5cm high, an amber coloured footed bowl decorated abstract swirl design in red, white and brown, etched signature to base, 9.5cm diameter and a mottled iridescent pebble paperweight, signed and dated 1984 to base, 8cm diameter (3)
£60-80



Lot 471

473

ARR **Siddy Langley (born 1955)** an **iridescent glass vase** of ovoid form with slender neck and flaring rim decorated abstract pattern and trails, etched signature and date '82 to base, 16cm high
£60-80

474

A **studio urn-shaped glass vase**, the green mottled body and pink slender neck with flared rim, 22.5cm high, a sculptural glass form with water filled apple shape and pink tinted stem to top, indistinctly signed glasshouse and dated '86, 23.5cm high, a translucent glass vase, the bulbous body on flat base, 15cm high and a globular orange glass vase, 8.5cm high (4)
£60-80

475

ARR **Peter Layton (born 1937)** an **art glass vase** of compressed ovoid form decorated abstract landscape design, engraved signature and dated 2001, 21cm high
£100-150

476

An **art glass vase**, the lobed body with abstract design in blue and green against opaline body with blue rim, indistinctly signed, 20cm high and a compressed ovoid orange art glass vase decorated multi-coloured abstract design to body, 25cm high
£60-80

477

A **Holmegaard smoky grey glass vase** decorated linear lines to top, maker's mark etched to base and dated 1962, 20.5cm high, a turquoise glass bowl with orange rim, 18cm diameter and a baluster glass vase decorated with wavy linear bands of blue and cream on an amber ground (possibly Peter Layton) 16cm high (3)
£60-80

478

ARR **Peter Layton (born 1937)** a **bottle vase** with slender neck and flared rim decorated mottled and iridescent trails over a blue and white ground, etched signature and dated 1987 to base, 22cm high
£100-150

479

ARR **Peter Layton (born 1937)** a **studio glass vase** of compressed ovoid form decorated abstract swirled and mottled design on a purple and lilac ground, etched signature to base, 21cm high
£100-150

480

A **blue and black art glass vase**, signed indistinctly '...Studio London 1987' to base, 18.5cm high and an art glass giraffe head signed indistinctly, 21cm long x 20cm wide
£40-60

481

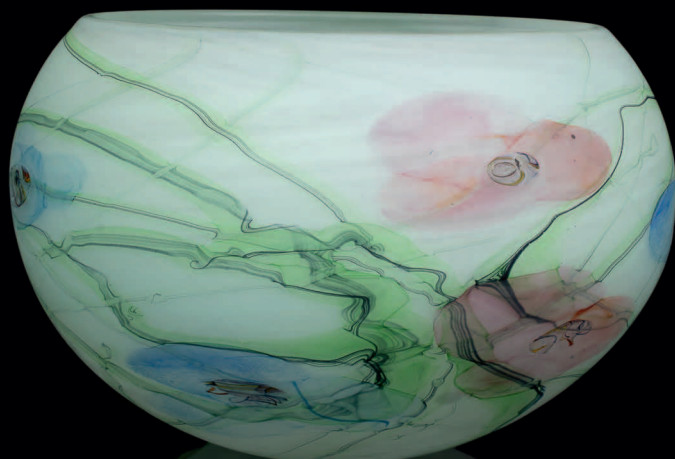
ARR **Peter Layton (born 1937)** a **frosted glass bowl** decorated stylised pink and blue flowers, green foliage and trailing lines, 25cm diameter x 16.5cm high
£180-220

482

ARR **Peter Layton (born 1937)** a **frosted glass vase** with slender neck decorated pink and blue flowers and trailing lines, 25cm high x 22cm wide
£180-220

483

ARR **Peter Layton (born 1937)** a **studio glass organic sculptural form** of trails of frosted glass, signed, 23cm high
£80-120



Lot 481



Lot 482

484

ARR **Peter Layton (born 1937) a frosted glass ovoid vase** decorated flowers and foliage with trailing lines, signed, 20cm high
£100-200

485

ARR **Peter Layton (born 1937) a studio glass vase** with slender neck and fluid rim decorated multi-coloured abstract details and trailing lines against a golden yellow ground, 23cm high
£100-200

486

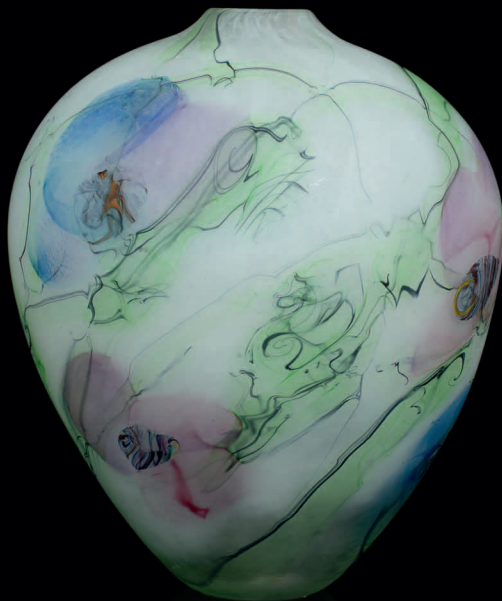
ARR **Peter Layton (born 1937) a glass scent bottle** with multi-coloured abstract design against a blue ground, 19cm high including stopper
£80-120

487

ARR **Peter Layton (born 1937) a frosted cylindrical glass vase** decorated pink and blue stylised flowers and trailing lines, 16cm high
£80-120

488

ARR **Peter Layton (born 1937) a small frosted glass bottle vase** with slender neck decorated stylised pink and blue flowers with trailing lines, 16cm high
£80-120



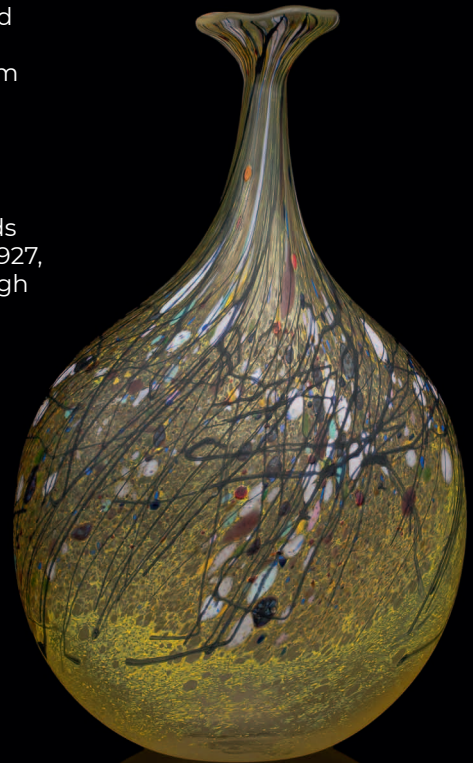
Lot 484

489

ARR **Peter Layton (born 1937) a frosted glass vessel** decorated pink, lilac and yellow stylised flowers and trailing lines, 9.5cm high x 9cm wide
£60-80

490

A **Lalique Avallon opalescent glass vase**, with moulded birds and berries, model 986 circa 1927, Lalique mark to base, 15cm high
£200-300



Lot 485



Lot 490

WORKS OF ART



500

ARR John Maltby (1936-2020)

a painted wooden automaton with rocking ship and mirrored back 'wind fresh to strong...gale force at times', signed in pencil to reverse, 26cm wide x 36cm high

£200-300

501

ARR Attributed to Desmond Chute (1895-1962) and the Ditchling Workshop

Devotional Niche

carved polychromed stone, in two sections

height 38cm overall

Provenance: *Woodbarton, Ditchling, East Sussex. Woodbarton was Chute's home, designed for him by Eric Gill.*

£700-1,000

502

After Eric Gill (1882-1942)

Alphabet, circa 1919

a plaster cast copy after the original Alphabet carved by Eric Gill

51cm x 54cm

£600-800

503

Attributed to the Workshop of Eric Gill (1882-1940)

A Roman Alphabet, circa 1919

a plaster cast plaque of the Roman alphabet, after the Trajan Column in Rome

inscribed to the reverse: 'TROGEN ALPH TC'

58.5cm x 57.5cm

Provenance: *The plaster cast is thought to have been executed by the workshop of Eric Gill.*

£600-800

504

After Eric Gill (1882-1942)

Alphabet in Relief, circa 1927

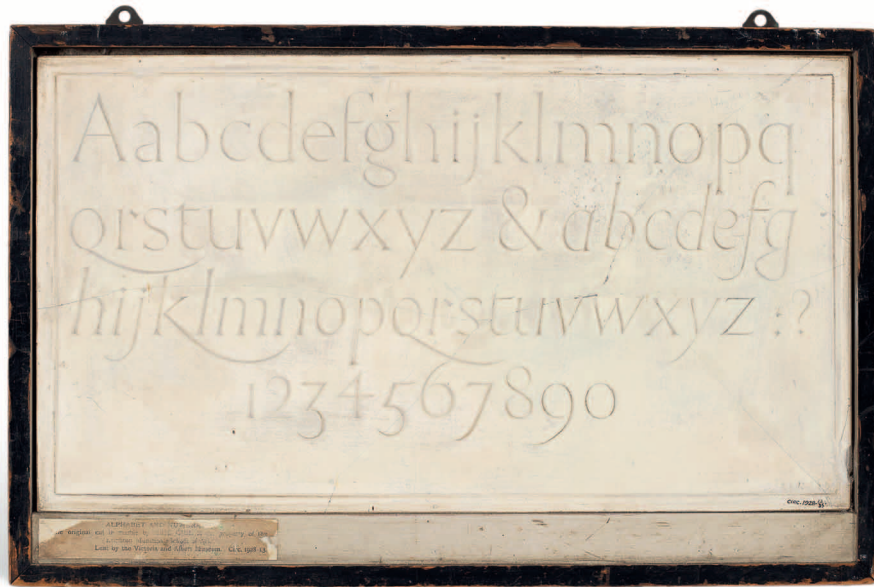
a plaster cast copy after the alphabet carved in relief by Eric Gill bears monogram lower right 'EG 27'

53.5cm x 54.5cm

£600-800



Lot 501



Lot 505

505

After Eric Gill (1882-1942)

Alphabet and Numerals, circa 1928
a plaster copy after the original
Hoptonwood stone panel
with two alphabets and a set of
numerals
inscribed 'AERG 09' lower right
31.5cm x 57cm

Provenance: *The remains of a
Victoria and Albert Museum
Circulations Collection label are
visible to the reverse.*
Footnote: *The current artwork was
cast in plaster by C. Smith & Sons.,
Kentish Town, around 1928, and is
based on Gill's original design from
1909. It bears an original typed
label to the lower left, reading: 'The
original cut in marble by Eric Gill is
the property of the Brighton
Municipal School of Art. Lent by the
Victoria and Albert Museum. Circ.
1928-13.'*

£600-800

506

ARR Jane Ackroyd (born 1967)

Ram's Head, circa 1986
welded mild steel
approximately 26cm high
£200-300

507

ARR Jane Ackroyd (born 1967)

Abstract Machinery
welded mild steel
approximately 40cm high
£200-300

508

In the manner of Archipenko, a
female torso on a tapered base,
unsigned, 23cm high
£100-150

509

**A Mesopotamian alabaster duck
weight,** with later metal mounts,
18cm high
£100-150

510

**An Arts & Crafts brass twin-
handled pedestal bowl** with
Ruskin style mounts, hammered
finish, 24cm diameter
£80-120

511

**Andreas Mikkelsen for Georg
Jensen,** a circular clock and
matching thermometer, the backs
with moulded mark, each 14cm
diameter
£50-70

512

**John Demott (American, 20th
Century)** a brass, copper and onyx
sculpture of seagulls on a pier,
signed to base, 195cm high x 12.5cm
wide
£30-50



Lot 506

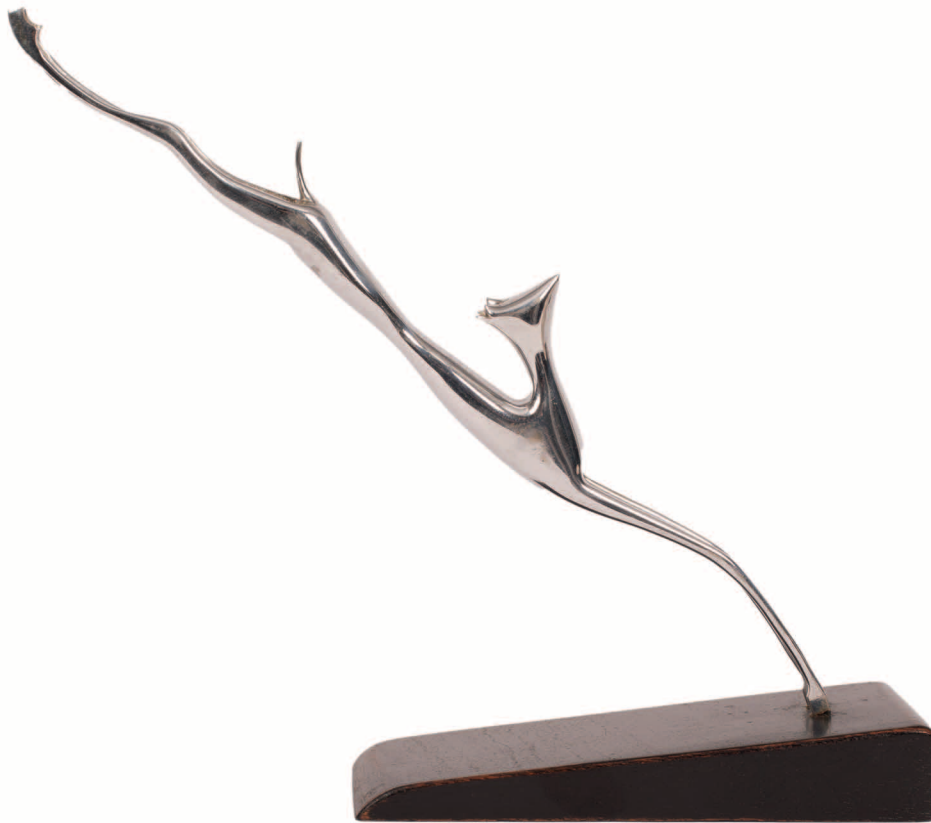


513

Demetre Chiparus (1886-1947)

Scarf Dancer an Art Deco silvered bronze figure of a dancing girl with outstretched arms holding a scarf, on stepped onyx plinth inscribed D H Chiparus and set with plaque with relief of a dancer, 68.5cm high
Provenance: *J. Pearce Pope & Sons*
house sale in 1986, lot 147

£6,000-8,000



Lot 522

514

ARR **David Wynne (British 1926-2014)** a bronze figure of a gorilla, numbered 5/8, 25cm high
£700-1,000

515

ARR **Andrew Armitage (20th Century)** a carved figure of a hare, on a circular base, 27.5cm high
£60-80

516

ARR **Guy Martin Boyd (1923-1988)** a bronze sculpture of a girl with a hula hoop, mounted on a painted rectangular base, inscribed to base, 15cm wide, 26cm high
£100-150

517

Manner of Siep van den Berg (1913-1998) a modern painted copper geometric sculpture, height 18.5cm
£100-150

518

A 20th Century wooden puzzle painted with two emus, signed indistinctly lower right, in a wooden frame, 36.5cm x 23.5cm
£40-70

519

A wooden carved head of a bald man, 20th Century, with amber eyes on a rectangular plinth base, 25cm high
£70-100

520

An aluminium model of the WWII Avro Lancaster mounted on an aluminium ashtray base, 24cm high
£40-60

521

An Art Deco style spelter figure of a dancer holding a hoop on a black marble base, 30cm high and a recumbent greyhound lying on a faux book, 15.5cm wide, 8.5cm high (2)
£60-80

522

Hagenauer, a silvered metal stylised figure of a leaping gazelle, on dark wood base, stamped marks, 23cm high
£400-600

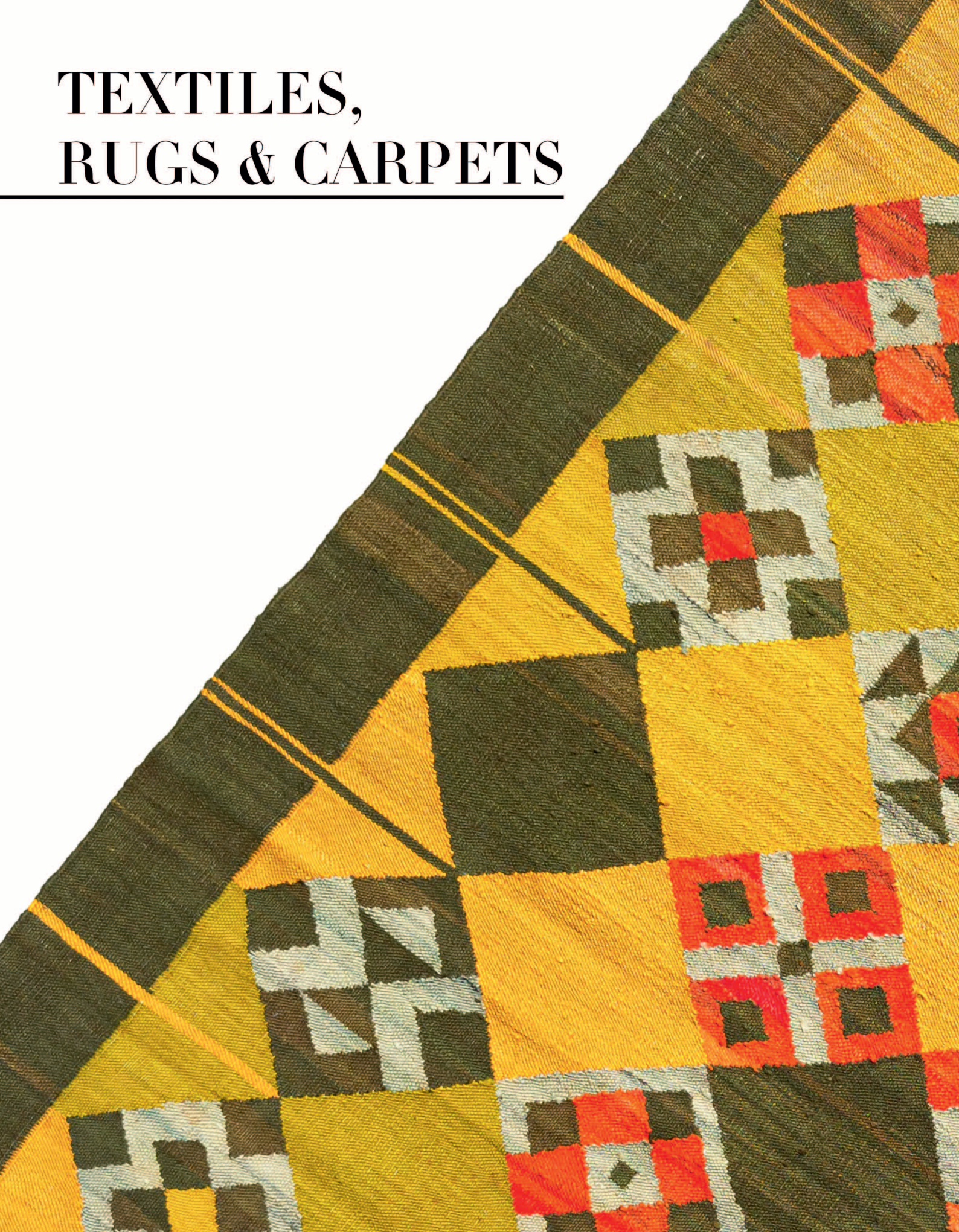
523

Hagenauer, a silvered metal desk set, undulating tray base with oval clock, pen holder and two stationery pots, figure of a skier to the front, stamped marks, 32cm wide, 27cm high
£500-700

524

A neon Coca Cola advertising sign, 24cm wide, 14cm deep, 71cm high
£100-150

TEXTILES, RUGS & CARPETS



530
ARR Grayson Perry (born 1960)
An Unpopular Opinions scarf
silk
84cm x 84cm approximately
£100-150

531
A Rya rug, Finland, 1970s, the moss green field centred by an ivory panel of polychrome rectangular motifs, label verso 'Karhunsammal, Toini Nyström, Suomen Kasityön Ystävät, Helsinki, Finland' (Friends of Finnish Handicrafts), 134cm x 94cm
£100-200

532
ARR Nicola Henley (Contemporary)
'Feeding Crows'
mixed media on linen, title stitched to lower right, signed to reverse, 37.5cm x 171cm
£100-150

533
An Ikat panel, Uzbekistan, 20th century, the ivory field with an all over chequered pattern of angular floral vines and floral panels, backed in striped ticking fabric, 237cm x 163cm
£200-300

534
An Ikat panel, Uzbekistan, late 19th Century, the deep indigo field of multiple panels with abstracted motifs in grey and purple, later backed and selvedge with Russian cloth, 187cm x 153cm
£300-500

535
An Ikat panel, Uzbekistan, circa 1880, the ivory field woven in three sections, framed by a wide later border in pink and ivory of various motifs, later backed with Russian cloth, 176cm x 164cm
£400-600

536
An Ikat panel, Uzbekistan, late 19th Century, of waxed cloth, the ivory field of large lobed ovoid motifs centred in saffron yellow, with original banding and floral corner stitching, contemporary backing, 230cm x 158cm
£400-600

537
A large herringbone patterned carpet by Kasthall, contemporary with green and grey patterned field of all over design, labelled 'Ingrid 919 Special' 510cm x 310cm
£80-120

538
An Eastern European flatweave rug, possibly Polish, circa 1970, the abraded ivory field of angular branches issuing red and yellow flowers, framed by a similar open border of similar flowers, 224cm x 115cm
£200-300



Lot 531



Lot 539



Lot 541

539

Ilsalestalon Mattolutommo (active 1960s) a Finnish flatweave rug or röllakan, signed ILS, circa 1960, the ivory field of horizontal linear motifs with a central band of abstract flowerheads issuing leaves, framed by a plain pale blue border, 195cm x 145cm
£200-300

540

A Swedish flatweave rug, signed RP, circa 1960, the ivory field of sparse cruciform flowerhead motifs framed by a plain pink border, 196cm x 135cm
£100-150

541

Ilsalestalon Mattolutommo (active 1960s) a Finnish flatweave rug or röllakan, signed ILS, the plain powder blue field with an ivory outlined blue border and a further dark blue border, 196cm x 138cm
£150-250

542

Anna Johanna Ångström (born 1938)
 A flatwoven kilim rug, circa 1960, the pale terracotta field centred by an open pattern of fish with two plant motif corner motifs, framed by a plain chestnut brown border, two corners with angular abstracted fish overlapping the field and border, signed 'Å' to border, 194cm x 141cm
£200-300



Lot 542

543

An Eastern European kilim rug, likely Polish, circa 1970, the yellow lozenge chequered field with randomly alternating lozenges of brown, green and polychrome geometric motifs, framed by a delicately striped border, 198cm x 134cm
£200-300

544

A small Berber carpet, Morocco, with an abrashed panelled field in shades of red, 205cm x 160cm
£200-300

545

A Berber carpet, Morocco, circa 1970, the pale abrashed raspberry field flanked by deep chestnut borders to each side, 323cm x 172cm
£300-500

546

A Berber carpet, Morocco, with a long piled deep red field with a cranberry red panel to one end, 290cm x 176cm
£300-500

547

A floral Axminster Art Deco carpet, English, 1930s, the unusually stepped salmon pink field decorated with an all over design of leaves and flowers 319cm x 274cm
 Provenance: *Purchased new in Birmingham circa 1938 by the vendor's parents and thence by descent*
£300-500

548

A contemporary part Angora Ushak carpet, Turkey, the pale blue grey field with an all over design of polychrome flowerheads, framed by an abrashed eau de nil border of flowerheads, 260cm x 207cm
£800-1,200

549

A contemporary part Angora Ushak carpet, Turkey, the abrashed light grey field with bold polychrome flowerheads, framed by an abrashed sky blue border of flowerheads, 284cm x 243cm
£1,200-1,800

550

A large modern carpet in the style of Fendi, of faux crocodile leather with faux white fur panels, approx 457cm x 381cm
£200-300



Lot 543



Lot 544

CHORLEY'S

Cotswolds Heritage since 1862

Explanation of Cataloguing Practice

Pictures

When offering Oil Paintings, Watercolours and Drawings, a picture code is used. Using one artist's name we illustrate below the manner of attributing the pictures in the catalogue.

Arthur Devis

In our opinion a work by the artist.

Attributed to Arthur Devis

In our opinion a work possibly by or partly by the artist.

School of Arthur Devis

In our opinion a work contemporary with the artist and showing his influence.

Manner of Arthur Devis

In our opinion a work in the artist's style and of a later date.

After Devis

In our opinion a copy of a known work by the artist (of any date).

Signed, Dated, Inscribed

In our opinion the work has been signed/dated/inscribed by the artist.

Bears Signature; Bears a Date; Bears an Inscription

In our opinion the signature/date/inscription is by a hand other than the artist.

Dimensions

These are given height before width.

Symbols

ARR Lot subject to Artist's Resale Right (*see page 1 for further information*)

† Lot subject to VAT on the hammer price, as well as on the Buyer's Premium.

♦ Lots containing ivory and may be subject to further export regulations

Condition

Condition information is not usually provided in our printed catalogue, but is available upon request. Further images and some condition reports can be viewed on our online catalogue at www.chorleys.com. The absence of a condition report does not imply that a lot is without imperfections.

Books are not collated unless stated and are not guaranteed to be complete.

Purchasers of old wines must assure themselves regarding ullage levels, labels, etc. No returns will be accepted.

Catalogue produced by Pardy & Son (Printers) Ltd

Generally

Furniture, porcelain, bronzes, etc are attributed as follows:

A Sheraton period

In our opinion made at the same time that Sheraton was active.

Sheraton style or of Sheraton design

In our opinion of later manufacture.

Dated 1660

In our opinion a genuine date.

Carved with the date 1660

In our opinion a later decoration.

A Derby figure

In our opinion a figure from the Derby factory.

Possibly Derby

In our opinion this is similar to a Derby product.

By

In our opinion made by the artist or modeller in question.

After

In our opinion made by another artist or modeller as a copy of the original.

CONDITIONS OF BUSINESS FOR ONSITE AUCTIONS

INFORMATION FOR BUYERS AT AUCTIONS

1. **Introduction.** The following notes are intended to assist bidders and buyers, particularly those that are inexperienced or new to our salerooms. All of our auctions are governed by our Conditions of Business incorporating the Terms of Consignment (primarily applicable to sellers), the Terms of Sale (primarily applicable to bidders and buyers) and any notices that are displayed in our salerooms or announced by the auctioneer at the auction. Our Conditions of Business are available for inspection at our salerooms and the Terms of Sale are printed in the back of our auction catalogues. Our staff will be happy to help you if there is anything in our Conditions of Business that you do not fully understand.

Please make sure that you read our Terms of Sale set out in this catalogue or on our website carefully before bidding in the auction. If your bid is successful, you will be obliged to comply with our Terms of Sale.

2. **Agency.** As auctioneers we usually act on behalf of the seller whose identity, for reasons of confidentiality, is not normally disclosed. If you buy at auction your contract for the goods is with the seller, not with us as auctioneer.
3. **Estimates.** Estimates are designed to help you gauge what sort of sum might be involved for the purchase of a particular lot. Estimates may change and should not be thought of as the sale price. The lower estimate may represent the reserve price (the minimum price for which a lot may be sold) and will not be below the reserve price. Estimates do not include the buyer's premium or VAT (where chargeable). Estimates are prepared some time before the auction and may be altered by a saleroom notice or announcement by the auctioneer before the auction of the lot. They are not definitive.
4. **Buyer's Premium.** The Terms of Sale oblige you to pay a buyer's premium on the hammer price of each lot purchased.
25% on the first £100,000
15% on the excess between £100,001 and £500,000
12.5% on the excess between £500,001 and £1,000,000
10% on the balance above £1,000,000
Where thresholds apply, the higher premium rate will apply to the portion of the bid price up to the threshold and the lower premium rate will apply to the portion of the bid price in excess of the threshold. VAT at the standard rate is added to this premium with the exception of books and unframed maps (see below).
5. **VAT.** Items in our catalogue may be marked in the following ways:
 - a. (*) indicates that VAT is payable by the buyer on the hammer price as well as being an element in the buyer's premium. VAT will be chargeable at the standard rate (presently 20%). This imposition of VAT is likely to be because the seller is registered for VAT within the European Union and is not operating the Dealers Margin Scheme or because VAT is due at 20% on importation into the UK.
 - b. (**) indicates that the lot has been imported from outside the European Union. [These lots are liable to a reduced rate of VAT (5%) on the hammer price and buyer's premium].
 - c. Lots which do not have either of the above symbols have no VAT payable on the hammer price. This is because such lots are sold using the Auctioneers' Margin Scheme. The VAT included within the premium is not recoverable as input tax.
6. **Inspection of goods by the buyer.** As we act on behalf of the seller, we are dependent on information provided by the seller about their goods. We may inspect lots and will act reasonably in taking a general view about them. However, we are normally unable to carry out detailed examinations of lots to check their condition in the way a buyer would do. You will have ample opportunity to inspect the goods. You must inspect and investigate lots that you might wish to bid for. Please note carefully the exclusion of liability for the condition of lots set out in the Terms of Sale at clause 13.4.

7. **Electrical goods.** These are sold as "antiques" and for collection and display only. If you buy electrical goods for use you must ask a qualified electrician to check them for compliance with safety regulations before you use them.
8. **Export of goods.** If you intend to export goods you must find out:
 - a. whether an export licence is needed; and
 - b. if there is a prohibition on importing goods of that character e.g. because the goods contain prohibited materials such as ivory (see Terms of Sale clause 15).
9. **Bidding.** Bidders will be required to register with us before the auction starts. We reserve the right to impose a deadline prior to the auction by which you must register or by which we must receive a commission bid. If you wish to bid on high value lots this deadline may be several days before the auction in order to allow us sufficient time to carry out the necessary checks. Lots will be invoiced to the name and address on the registration form. Please enquire in advance about our arrangements for telephone or online bidding. Please note that we may refuse to register you if you do not provide us with all the information and documentation that we ask for or at our discretion.
10. **Financial Checks.** As auctioneers we may have to conduct various checks into our customers under the Money Laundering, Terrorist Financing and Transfer of Funds (Information on the Payer) Regulations 2017 and related legislation. Unless we confirm we already have this information, on registration you will be required to provide the following:

For individuals, official photo identification (driving licence, passport or equivalent) and proof of address (if this is not included in your ID document);

For corporate entities, the certificate of incorporation (or equivalent) with your official name, registered number (if any) and registered address, as well as details and ID documentation for directors and beneficial owners of the entity;

For trusts and estates, details and ID documentation for executors/trustees and details of beneficiaries; please contact us for further information.

You may be asked for further information if we deem this necessary. If you are bidding for another person (your "Principal") you will be required to provide the above information for yourself and your Principal, along with a signed letter from your Principal authorising you to bid.

For further information about ID requirements please call us on 01452 344499. If we deem that you have not provided sufficient information for us to complete our anti-money laundering and terrorist financing checks to our satisfaction, we may refuse to register you to bid and we may postpone completion of or cancel any contract made by you and the Seller in the event you have made a successful bid.

11. **Commission bidding.** You may leave commission bids with us indicating the maximum amount to be bid against a lot (excluding the buyers' premium and/or any applicable VAT). We will execute commission bids as cheaply as possible having regard to the reserve (if any) and competing bids. If two buyers submit identical commission bids we may prefer the first bid received (where this can be reasonably ascertained). Please enquire in advance about our arrangements for the leaving of commission bids by telephone, email, via our website or through online bidding platforms.
12. **Methods of Payment.** We accept payment by debit card, credit card (maximum £1,000 per auction) and bank transfer. Please contact us before the sale if you plan to use any other method of payment. We do not accept payment by card over the telephone.
13. **Collection and storage.** Please note what the Terms of Sale say about collection and storage. It is important that you pay for and collect goods promptly. Any delay may involve you having to pay storage charges.

TERMS OF SALE

Both the sale of goods at our auctions and your relationship with us are governed by the Terms of Consignment (primarily applicable to sellers) the Terms of Sale (primarily applicable to bidders and buyers) and any notices displayed in the saleroom or announced by us at the auction (collectively, the "Conditions of Business"). The Terms of Consignment and Terms of Sale are available at our saleroom on request.

Please read these Terms of Sale carefully. Please note that if you register to bid and/or bid at auction this signifies that you agree to and will comply with these Terms of Sale.

Please note that these Terms of Sale relate to auctions held at our premises only. We have separate terms for online only auctions.

1 Definitions and interpretation

To make these Terms of Sale easier to read, we have given the following words a specific meaning:

"Auctioneer"	Means Chorley's, a limited company registered in England and Wales with registration number 5857433 and whose registered office is located at Staverton Court, Cheltenham GL51 0UX, or its authorised auctioneer, as appropriate;
"Bidder"	means a person participating in bidding at the auction;
"Buyer"	means the person who makes the highest bid for a Lot accepted by the Auctioneer;
"Deliberate Forgery"	means: (a) an imitation made with the intention of deceiving as to authorship, origin, date, age, period, culture or source; (b) which is described in the catalogue as being the work of a particular creator without qualification; and (c) which at the date of the auction had a value materially less than it would have had if it had been as described;
"Hammer Price"	means the level of the highest bid for a Lot accepted by the Auctioneer by the fall of the hammer;
"Lot(s)"	means the goods that we offer for sale at our auctions;
"Money Laundering Regulations"	means the Money Laundering, Terrorist Financing and Transfer of Funds (Information on the Payer) Regulations 2017, as amended;
"Premium"	means the premium that we will charge you on your purchase of a Lot to be calculated as set out in Clause 4;
"Reserve"	means the minimum hammer price at which a Lot may be sold;
"Sale Proceeds"	means the net amount due to the Seller;
"Seller"	means the persons who consign Lots for sale at our auctions;
"Terms of Consignment"	means the terms on which we agree to offer Lots for sale in our auctions as agent on behalf of Sellers;
"Terms of Sale"	means these terms of sale, as amended or updated from time to time;
"Total Amount Due"	means the Hammer Price for a Lot, the Premium, any applicable artist's resale right royalty, any VAT due and any additional charges payable by a defaulting buyer under these Terms of Sale;
"Trader"	means a Seller who is acting for purposes relating to that Seller's trade, business, craft or profession, whether acting personally or through another person acting in the trader's name or on the trader's behalf;

"VAT" means Value Added Tax or any equivalent sales tax;

"Website" means our website available at www.chorleys.com In these Terms of Sale the words 'you', 'yours', etc. refer to you as the Buyer. The words "we", "us", etc. refer to the Auctioneer. Any reference to a 'Clause' is to a clause of these Terms of Sale unless stated otherwise.

2 Information that we are required to give to Consumers

- 2.1 A description of the main characteristics of each Lot as contained in the auction catalogue.
- 2.2 Our name, address and contact details as set out herein, in our auction catalogues and/or on our Website.
- 2.3 The price of the Goods and arrangements for payment as described in Clauses 4, 5 and 8.
- 2.4 The arrangements for collection of the Goods as set out in Clauses 9 and 10.
- 2.5 Your right to return a Lot and receive a refund if the Lot is a Deliberate Forgery as set out in Clause 14.
- 2.6 We and Trader Sellers have a legal duty to supply any Lots to you in accordance with these Terms of Sale.
- 2.7 If you have any complaints, please send them to us directly at the address set out on our Website.
- 2.8 We also refer you to your warranties as a Bidder and Buyer as set out in clause 6.

3 Bidding procedures and the Buyer

- 3.1 You must register your details with us before bidding and provide us with any requested proof of identity and billing information, in a form acceptable to us (Paragraph 10 of the Information for Buyers in the Sale Catalogue refers). You must also satisfy any security arrangements we have in place before entering the auction room to view or bid.
- 3.2 We strongly recommend that you attend the auction in person if possible. You are responsible for your decision to bid for a particular Lot. If you bid on a Lot, including by telephone and online bidding, or by placing a commission bid, we assume that you have carefully inspected the Lot and satisfied yourself regarding its condition.
- 3.3 If you instruct us in writing, we may execute commission bids on your behalf. Neither we nor our employees or agents will be responsible for any failure to execute your commission bid, unless our failure to do so is unreasonable. Where two or more commission bids at the same level are recorded we have the right to prefer the first bid made (where this can be reasonably ascertained).
- 3.4 The Bidder placing the highest bid for a Lot accepted by the Auctioneer will be the Buyer at the Hammer Price. Any dispute about a bid will be settled at our discretion. We may reoffer the Lot during the auction or may settle the dispute in another way. We will act reasonably when deciding how to settle the dispute.
- 3.5 Bidders will be deemed to act as principals, even if the Bidder is acting as an agent for a third party.
- 3.6 We may bid on Lots on behalf of the Seller up to one bid below the Reserve.
- 3.7 We may refuse to accept any bid if it is reasonable for us to do so.
- 3.8 Bidding increments will be at our sole discretion (but will be in line with standard auction practice).

4.1 The purchase price

As Buyer, you will pay:

- a. the Hammer Price;
- b. premium of a percentage of the Hammer Price calculated on an incremental basis:
25% on the first £100,000
15% on the balance between £100,001 and £500,000
12.5% on the balance between £500,001 and £1,000,000
10% on the balance above £1,000,000;
- c. any artist's resale right royalty payable on the sale of the Lot; and
- d. any VAT due.

5 VAT

5.1 You shall be liable for the payment of any VAT applicable on the Hammer Price and premium due for a Lot. Please see the symbols used in the auction catalogue for that Lot and the "Information for Buyers" in our auction catalogue for further information.

We will charge VAT at the current rate at the date of the auction.

6 Buyer Warranties

6.1 You warrant that the funds used for settlement are not connected with any criminal activity including tax evasion, and that you are neither under investigation, nor have you been charged with or convicted of money laundering, terrorist activities or other crimes.

6.2 Where you are bidding on behalf of another person, you warrant that:

you have conducted appropriate customer due diligence on the ultimate buyer(s) of the Lot(s) in accordance with all applicable anti-money laundering and sanctions laws, you consent to us relying on this due diligence, and you will retain for a period of not less than 5 years the documentation evidencing the due diligence;

You will make such documentation promptly available for immediate inspection by an independent third party auditor upon our written request to do so;

the arrangements between you and the ultimate buyer(s) in relation to the Lot or otherwise do not, in whole or in part, facilitate tax crimes;

you do not know, and have no reason to suspect, that the funds used for settlement are connected with, the proceeds of any criminal activity, including tax evasion, or that the ultimate buyer(s) are under investigation, or have been charged with or convicted of money laundering, terrorist activities or other crimes.

7 The contract between you and the Seller

7.1 The contract for the purchase of the Lot between you and the Seller will be formed when the hammer falls accepting the highest bid for the Lot at the auction.

7.2 You may directly enforce any terms in the Terms of Consignment against a Seller to the extent that you suffer damages and/or loss as a result of the Seller's breach of the Terms of Consignment.

7.3 If you breach these Terms of Sale, you may be responsible for damages and/or losses suffered by a Seller or us. If we are contacted by a Seller who wishes to bring a claim against you, we may in our discretion provide the Seller with information or assistance in relation to that claim.

7.4 We normally act as an agent only and will not have any responsibility for default by you or the Seller (unless we are the Seller of the Lot).

7.5 In addition to any other rights we may have to cancel a contract for sale under these Terms of Sale, in the event:

7.5.1 you are in breach of your warranties in clause 6; or

7.5.2 we have not completed our enquiries pursuant to the Money Laundering Regulations and related legislation to our satisfaction; or

7.5.3 we have reason to believe that the transaction might be unlawful for any reason, or that the sale might put us under any civil or criminal liability,

We may delay completion of a sale, delay release of a Lot or cancel the sale of a Lot.

8 Payment

8.1 Immediately following your successful bid on a Lot you will:

8.1.1 give to us, if not already provided to our satisfaction, proof of identity in a form acceptable to us (and any other information that we require in order to comply with our anti-money laundering obligations – please refer to Paragraph 10 of the Information for Buyers in the Sale Catalogue); and

8.1.2 pay to us the Total Amount Due by debit card, credit card (for which there is an upper limit of £1,000 per client per auction) or bank transfer.

8.2 If you owe us any money, we may use any payment made by you to repay these debts.

9 Title and collection of purchases

9.1 While you are bound by the contract for the purchase of the Lot from the fall of the hammer on your successful bid, ownership in the Lot will not pass to you until:

9.1.1 you have paid us in full the Total Amount Due in cleared funds for that Lot;

9.1.2 you have provided us with the information set out in clause 8.1.1; and

9.1.3 we have completed our enquiries pursuant to the Money Laundering Regulations and related legislation.

You may not claim or collect a Lot until you have paid for it and ownership has passed to you.

9.2 Unless notified otherwise, you will (at your own expense) collect any Lots that you have purchased and paid for either:

9.2.1 not later than seven business days following the day of the auction; or

9.2.2 not later than seven business days following the date that we have received payment of the Total Amount Due in cleared funds, if later.

9.3 If you do not collect the Lot within this time period, you will be responsible for any reasonable removal, storage and insurance charges in relation to that Lot, unless the delay was caused by our continuing investigations under Clause 7.5.2.

9.4 Risk of loss or damage to the Lot will pass to you when you (or your agents) take physical possession of the Lot.

9.5 If you do not collect the Lot that you have paid for within thirty days after the auction, we may sell the Lot. We will pay the proceeds of any such sale to you, but (unless the delay was caused by our continuing investigations under Clause 7.5.2) will deduct any storage charges or other sums that we have incurred in the storage and sale of the Lot. We reserve the right to charge you a selling commission at our standard rates on any such resale of the Lot.

10 Remedies for non-payment or failure to collect purchases

10.1 Please do not bid on a Lot if you do not intend to buy it. If your bid is successful, these Terms of Sale will apply to you. This means that you will have to carry out your obligations set out in these Terms of Sale. If you do not comply with these Terms of Sale we may (acting on behalf of the Seller and ourselves) pursue one or more of the following measures:

10.1.1 take action against you for damages for breach of contract;

10.1.2 reverse the sale of the Lot to you and/or any other Lots sold by us to you;

- 10.1.3 resell the Lot by auction or private treaty (in which case you will have to pay any difference between the price you should have paid for the Lot and the price we sell it for as well as the charges outlined in Clause 9.5. Please note that if we sell the Lot for a higher amount than your winning bid, the extra money will belong to the Seller;
- 10.1.4 remove, store and insure the Lot at your expense;
- 10.1.5 if you do not pay us within seven business days of your successful bid, we may charge interest at a rate not exceeding 1.5% per month on the total amount due;
- 10.1.6 keep that Lot or any other Lot sold to you until you pay the Total Amount Due;
- 10.1.7 reject or ignore bids from you or your agent at future auctions or impose conditions before we accept bids from you; and/or
- 10.1.8 if we sell any Lots for you, use the money made on these Lots to repay any amount you owe us.
- 10.2 We will act reasonably when exercising our rights under Clause 10.1. We will contact you before exercising these rights and try to work with you to correct any non-compliance by you with these Terms of Sale.

11 Health and Safety

Although we take reasonable precautions regarding health and safety, you are on our premises at your own risk. Please note the lay-out of the premises and security arrangements. Neither we nor our employees or agents are responsible for the safety of you or your property when you visit our premises, unless you suffer any injury to your person or damage to your property as a result of our, our employees' or our agents' negligence.

12 Seller's Warranties

- 12.1 The Seller warrants to us and to you that:
 - 12.1.1 the Seller is the true owner of the Lot for sale or is authorised by the true owner to offer and sell the lot at auction;
 - 12.1.2 the Seller is able to transfer good and marketable title to the Lot to you free from any third party rights or claims; and
 - 12.1.3 as far as the Seller is aware, the main characteristics of the Lot set out in the auction catalogue (as amended by any notice displayed in the saleroom or announced by the Auctioneer at the auction) are correct.
- 12.2 If, after you have placed a successful bid and paid for a Lot, any of the warranties above are found not to be true, please notify us in writing. Neither we nor the Seller will be liable to pay you any sums over and above the Total Amount Due and we will not be responsible for any inaccuracies in the information provided by the Seller except as set out below.
- 12.3 Please note that many of the Lots that you may bid on at our auction are second-hand.
- 12.4 If a Lot is not second-hand and you purchase the Lot as a Consumer from a Seller that is a Trader, a number of additional terms may be implied by law in addition to the Seller's warranties set out at Clause 12.1 (in particular under the Consumer Rights Act 2015). These Terms of Sale do not seek to exclude your rights under law as they relate to the sale of these Lots.
- 12.5 Save as expressly set out above, all other warranties, conditions or other terms which might have effect between the Seller and you, or us and you, or be implied or incorporated by statute, common law or otherwise are excluded.

13 Descriptions and Condition

- 13.1 Our descriptions of the Lot will be based on: (a) information provided to us by the Seller of the Lot (for which we are not liable); and (b) our opinion (although it is likely that we will not be able to carry out a detailed inspection of each Lot).

- 13.2 We will give you a number of opportunities to view and inspect the Lots before the auction. You (and any independent consultants acting on your behalf) must satisfy yourself about the accuracy of any description of a Lot. We shall not be responsible for any failure by you or your consultants to properly inspect a Lot.
- 13.3 Representations or statements by us as to authorship, genuineness, origin, date, age, provenance, condition or estimated selling price involve matters of opinion. We undertake that any such opinion will be honestly and reasonably held and accept liability for opinions given negligently or fraudulently.
- 13.4 Please note that Lots (in particular second-hand Lots) are unlikely to be in perfect condition. Lots are sold "as is" (i.e. as you see them at the time of the auction). Books are not collated and are not guaranteed to be complete. The absence of any reference to condition in a description does not mean that the lot is without damage, restoration or loss. While we do not usually include condition information within our catalogue descriptions, we are happy to provide a condition report for any lot upon request before the auction. Neither we nor the Seller accept any liability for the condition of second-hand Lots or for any condition issues affecting a Lot if such issues are included in the description of a Lot in the auction catalogue (or in any saleroom notice) and/ or which the inspection of a Lot by the Buyer ought to have revealed.
- 13.5 Historically many gemstones have been subject to a variety of treatments to enhance their appearance. Sapphires and rubies are routinely heat treated to improve their colour and clarity, emeralds are also frequently treated with oils or resin for the same purpose. Treatments such as staining, irradiation or coating may have been used on other gemstones. These treatments may be permanent, whilst others may need special care or re-treatment to retain their appearance. Bidders should be aware that estimates assume that gemstones may have been subjected to such treatments. A number of laboratories issue certificates that give more detailed descriptions of gemstones, however there may not be consensus between different laboratories on the degrees or types of treatment for any particular gemstone. In the event that Chorley's has been given or obtained certificates for any lots in the sale, these certificates will be disclosed in the catalogue. In the event that no certificate is published in the catalogue, bidders should assume that the gemstone may have been treated. Neither Chorley's nor the seller accepts any liability for contradictions or differing certificates obtained by buyers on any lots subsequent to the sale.
- 13.6 Every effort is made to ensure the accuracy of the images on our website and in our printed catalogues, however due to variations in the printing process and in the screen settings of individual computers, tablets and phones, we cannot guarantee that the colour in an image is truly representative of the actual item.
- 13.7 All weights and measures provided in the catalogue should be regarded as approximate.

14 Ivory and Endangered Species

Chorley's condemns the poaching of all species, especially African elephants and the wanton destruction of natural habitat. Thus we will offer for sale no products containing ivory produced after June 1947, the date of the Convention of International Trade in Endangered Species of Wild Fauna and Flora (CITES). We consider that pieces produced before this date are likely to be purchased as pieces of artistic or cultural merit, which happen to contain ivory, rather than be purchased for their ivory content.

Due to international laws, any item on the Endangered species list, whether it dates from the 18th/19th Century

or the 1930s, requires re-export permits for bidders outside the EU (CITES). Some countries also require import permits as well and all permits must be in place prior to shipment. Chorley's cannot be held liable if a purchaser buys a lot that comes within this field and then import/export licences cannot be arranged. It is the potential buyer's responsibility to check the applicable regulations before bidding for a lot which comes under these laws.

15 Deliberate Forgeries

15.1 You may return any Lot which is found to be a Deliberate Forgery to us within six months of the auction provided that you return the Lot to us in the same condition as when it was released to you, accompanied by a written statement identifying the Lot from the relevant catalogue description and a written statement of defects.

15.2 If we are reasonably satisfied that the Lot is a Deliberate Forgery we will refund the money paid by you for the Lot (including any Premium and applicable VAT) PROVIDED that if:

15.2.1 the catalogue description reflected the accepted view of experts as at the date of the auction; or

15.2.2 you personally are not able to transfer good and marketable title in the Lot to us;

you will have no right to a refund under this Clause 15.2.

15.3 If you have sold the Lot to another person, we will only be liable to refund the price that you paid for the Lot. We will not be responsible for repaying any additional money you may have made from selling the Lot.

15.4 Your right to return a Lot that is a Deliberate Forgery does not affect your legal rights and is in addition to any other right or remedy provided by law or by these Terms of Sale.

16 Our liability to you

16.1 We will not be liable for any loss of opportunity or disappointment suffered as a result of participating in our auction.

16.2 In addition to the above, neither we nor the Seller shall be responsible to you and you shall not be responsible to the Seller or us for any other loss or damage that any of us suffer that is not a foreseeable result of any of us not complying with the Conditions of Business. Loss or damage is foreseeable if it is obvious that it will happen or if at the time of the sale of the Lot, we, you and the Seller knew it might happen.

16.3 Subject to Clause 16.4, if we are found to be liable to you for any reason (including, amongst others, if we are found to be negligent, in breach of contract or to have made a misrepresentation), our liability will be limited to the total purchase price paid by you to us for any Lot.

16.4 Notwithstanding the above, nothing in these Terms of Sale shall limit our liability (or that of our employees or agents) for:

16.4.1 death or personal injury resulting from negligence (as defined in the Unfair Contract Terms Act 1977);

16.4.2 fraudulent misrepresentation; or

16.4.3 any liability which cannot be excluded by law.

17 Notices

17. All notices between you and us regarding these Terms of Sale must be in writing and signed by or on behalf of the party giving it.

17.2 Any notice referred in Clause 16.1 may be given:

1 7.2.1 by delivering it by hand;

17.2.2 by first class pre-paid post or Recorded Delivery; or

17.2.3 by email, provided that a copy is also sent by pre-paid post or Recorded Delivery.

17.3 Notices must be sent:

17.3.1 by hand or registered post:

a to us, at our address set out in these Terms of Sale or at our registered office address appearing on our Website; and

b. to you, at the last postal address that you have given

to us as your contact address in writing; or

17.3.2 by email:

a. to us, by sending the notice to both the following email addresses:

wjf@chorleys.com

info@chorleys.com

b. to you, by sending the notice to any email address that you have given to us as your contact email address in writing.

17.4 Notices will be deemed to have been received:

17.4.1 if delivered by hand, on the day of delivery;

17.4.2 if sent by first class pre-paid post or Recorded Delivery, two business days after posting, exclusive of the day of posting; or

17.4.3 if sent by email, at the time of transmission unless sent after 17.00 in the place of receipt in which case they will be deemed to have been received on the next business day in the place of receipt (provided that a copy has also been sent by pre-paid post or Recorded Delivery as set out in Clause 17.2.3).

17.5 Any notice or communication given under these Terms of Sale will not be validly given if sent by fax, email, any form of messaging via social media or text message.

18 Data Protection

We will hold and process securely any personal data in relation to you in accordance with the 2018 General Data Protection Regulation.

19 General

19.1 We may, acting reasonably, refuse admission to our premises or attendance at our auctions by any person.

19.2 We act as an agent for our Sellers. The rights we have to claim against you for breach of these Terms of Sale may be used by us, our employees or agents, or the Seller, its employees or agents, as appropriate. Other than as set out in this Clause, these Terms of Sale are between you and us and no other person will have any rights to enforce any of these Terms of Sale.

19.3 We may use special terms in the catalogue descriptions of particular Lots. You must read these terms carefully along with any glossary provided in our auction catalogues.

19.4 Each of the clauses of these Terms of Sale operates separately. If any court or relevant authority decides that any of them are unlawful, the remaining clauses will remain in full force and effect.

19.5 We may change these Terms of Sale from time to time, without notice to you. Please read these Terms of Sale carefully, as they may be different from the last time you read them.

19.6 Except as otherwise stated in these Terms of Sale, each of our rights and remedies are: (a) are in addition to and not exclusive of any other rights or remedies under these Terms of Sale or general law; and (b) may be waived only in writing and specifically. Delay in exercising or non-exercise of any right under these Terms of Sale is not a waiver of that or any other right. Partial exercise of any right under these Terms of Sale will not preclude any further or other exercise of that right or any other right under these Terms of Sale. Waiver of a breach of any term of these Terms of Sale will not operate as a waiver of breach of any other term or any subsequent breach of that term.

19.7 These Terms of Sale and any dispute or claim arising out of or in connection with them (including any non-contractual claims or disputes) shall be governed by and construed in accordance with the laws of England and the parties irrevocably submit to the exclusive jurisdiction of the English courts.



Prinknash Abbey Park | GL4 8EU

20 MAY 2025

ENQUIRIES

info@chorleys.com

01452 344499

